

Blade terminal

Blade Terminals, Insulated



FEATURES:

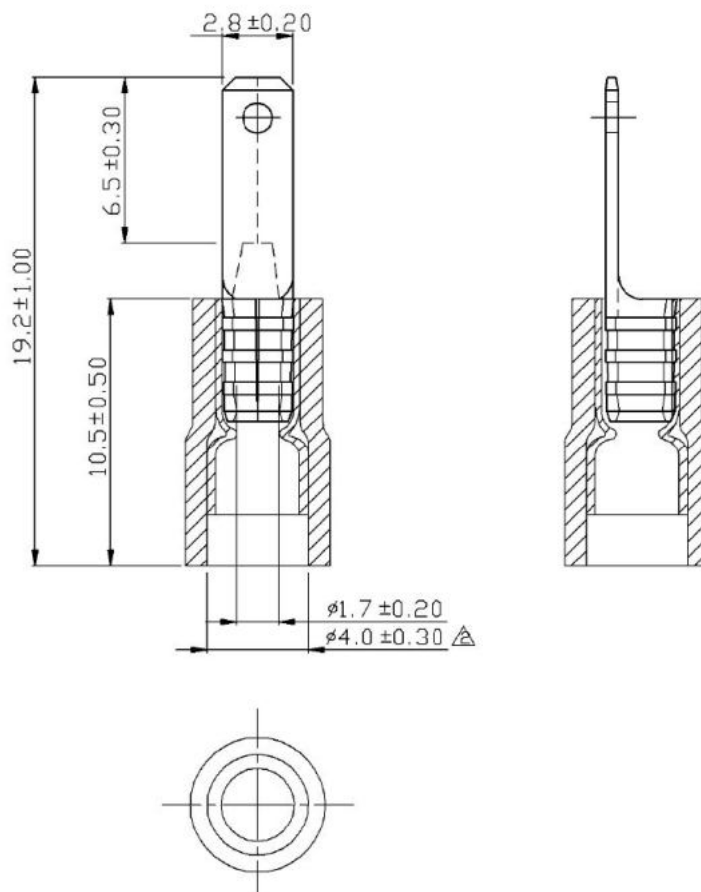
Double crimp with copper sleeve on barrel

SPECIFICATION:







Terminal Material	Brass
Max. electrical rating	105 °C 600 V max.
Insulation terminal	Vinyl
Surface material	Tin-plated
Nema tab	0.032 " * 0.110 " (0.8 * 2.8 mm)
Max. electrical current	A.W.G. 22 20 18 16
	AMP. 3 4 7 10

PRODUCT RANGE:

Art. Nr.	Contact	Wire range	Insulation colour	Thickness
RND 465-00007	2.8 x 0.5 mm	0.5...1.5 mm ²	red	0.5 mm
RND 465-00008	4.8 x 0.5 mm	0.5...1.5 mm ²	red	0.5 mm
RND 465-00080	4.8 x 0.8 mm	0.5...1.5 mm ²	red	0.4 mm
RND 465-00082	6.3 x 0.8 mm	0.5...1.5 mm ²	red	0.4 mm
RND 465-00083	4.8 x 0.8 mm	1.5...2.5 mm ²	blue	0.4 mm
RND 465-00084	6.3 x 0.8 mm	1.5...2.5 mm ²	blue	0.4 mm
RND 465-00085	6.3 x 0.8 mm	4...6 mm ²	yellow	0.4 mm
RND 465-00088	2.8 x 0.8 mm	0.5...1.5 mm ²	red	0.4 mm



Products Operation Instruction

Products type	Vinyl insulated double crimp disconnectors (1mm ²)	Products type																
Wire Size Range	22 ~16 AWG	<p>1. Use tool to strip a suitable length of insulation from the wire.</p> 	<p>2. Insert the wires (stripped end) into the terminals wire port.</p> 															
Wire strip Length	6.80mm																	
Crimping Tool		<p>3. Use the clamps to keep pressure on the connector (terminals must be placed in the right position).</p> 	<p>4. Done.</p> 															
				<p>Height & Width after crimping</p> <table border="1"> <thead> <tr> <th>Wire Size</th> <th>Height (mm)</th> <th>Width (mm)</th> </tr> </thead> <tbody> <tr> <td>22AWG</td> <td>3.60</td> <td>5.50</td> </tr> <tr> <td>20AWG</td> <td>3.60</td> <td>5.50</td> </tr> <tr> <td>18AWG</td> <td>3.60</td> <td>5.50</td> </tr> <tr> <td>16AWG</td> <td>3.60</td> <td>5.50</td> </tr> </tbody> </table>		Wire Size	Height (mm)	Width (mm)	22AWG	3.60	5.50	20AWG	3.60	5.50	18AWG	3.60	5.50	16AWG
Wire Size	Height (mm)	Width (mm)																
22AWG	3.60	5.50																
20AWG	3.60	5.50																
18AWG	3.60	5.50																
16AWG	3.60	5.50																