



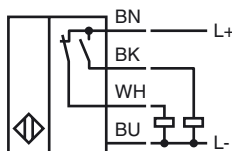
### Model Number

NBN12-18GM50-A2

### Features

- 12 mm not embeddable

### Connection

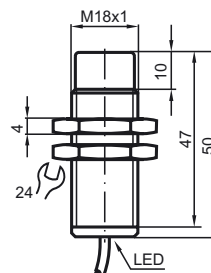


### Accessories

#### BF 18

Mounting flange, 18 mm

### Dimensions



### Technical Data

#### General specifications

Switching element function		PNP	NO/NC
Rated operating distance	$s_n$	12 mm	
Installation		not embeddable	
Output polarity		DC	
Assured operating distance	$s_a$	0 ... 9.72 mm	
Reduction factor $r_{AI}$		0.45	
Reduction factor $r_{Cu}$		0.4	
Reduction factor $r_{303}$		0.7	

#### Nominal ratings

Operating voltage	$U_B$	10 ... 30 V
Switching frequency	$f$	0 ... 1000 Hz
Hysteresis	$H$	typ. 5%
Reverse polarity protected		reverse polarity protected
Short-circuit protection		pulsing
Voltage drop	$U_d$	$\leq 3$ V
Operating current	$I_L$	0 ... 200 mA
Off-state current	$I_r$	0 ... 0.5 mA typ. 0.1 $\mu$ A at 25 °C
No-load supply current	$I_0$	$\leq 20$ mA
Indication of the switching state		all direction LED, yellow

#### Functional safety related parameters

MTTF <sub>d</sub>	1570 a
Mission Time (T <sub>M</sub> )	20 a
Diagnostic Coverage (DC)	0 %

#### Ambient conditions

Ambient temperature	-25 ... 70 °C (-13 ... 158 °F)
---------------------	--------------------------------

#### Mechanical specifications

Connection type	cable PVC , 2 m
Core cross-section	0.34 mm <sup>2</sup>
Housing material	brass, nickel-plated
Sensing face	PBT
Protection degree	IP67

#### Compliance with standards and directives

Standard conformity	
Standards	EN 60947-5-2:2007 IEC 60947-5-2:2007

#### Approvals and certificates

UL approval	cULus Listed, General Purpose
CSA approval	cCSAus Listed, General Purpose
CCC approval	Products with a maximum operating voltage of $\leq 36$ V do not bear a CCC marking because they do not require approval.