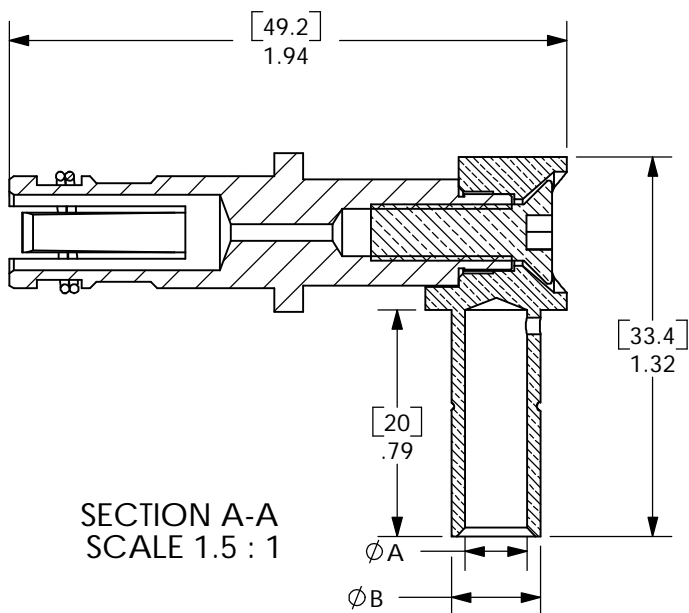
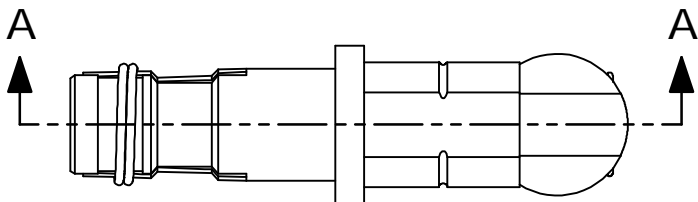


THE INFORMATION CONTAINED IN THIS DRAWING IS THE SOLE PROPERTY OF ANDERSON POWER PRODUCTS. ANY REPRODUCTION IN PART OR WHOLE WITHOUT THE WRITTEN PERMISSION OF ANDERSON POWER PRODUCTS IS PROHIBITED.

Copyright 2004

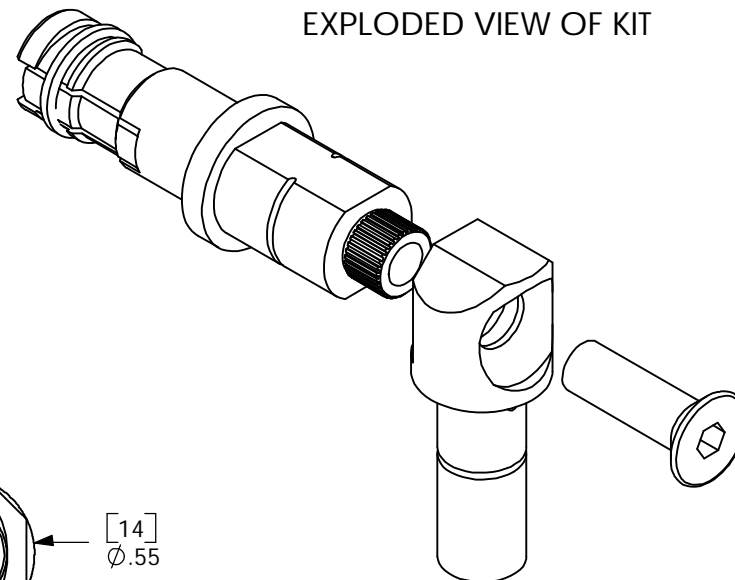
ANDERSON POWER PRODUCTS RESERVES THE RIGHT TO ALTER PRODUCT TYPES, THEIR TECHNICAL DATA, DIMENSION, STYLE AND ACCESSORIES WITHOUT PRIOR NOTIFICATION.

FULLY ASSEMBLED CONTACT



SECTION A-A  
SCALE 1.5 : 1

EXPLODED VIEW OF KIT



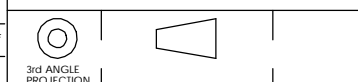
PART NO	WIRE SIZE	A		B	
		IN	mm	IN	mm
PMHPAS06	#2AWG/35mm sq	.36	9.1	.49	12.5
PMHPAS07	25mm sq	.32	8.0	.43	11.0
PMHPAS08	#4 AWG	.29	7.2	.38	9.6
PMHPAS09	16mm sq	.24	6.0	.33	8.4
PMHPAS10	#6 AWG	.22	5.5	.31	7.9

- NOTES:
- MATERIALS:  
SOCKET BODY AND CRIMP BARREL- COPPER ALLOY, SILVER PLATE  
SPRING- STAINLESS STEEL  
FH SCREW- STAINLESS STEEL
  - RIGHT ANGLE CONTACTS ARE PROVIDED AS A 3 PIECE KIT: SOCKET BODY WITH SPRING, CRIMP BARREL, AND FH SCREW. CUSTOMER MUST MUST ATTACH SOCKET BODY TO CRIMP BARREL WITH PROVIDED SCREW AFTER CRIMPING WIRE. (REFER TO ASSEMBLY INSTRUCTIONS)
  - CONTACTS TO BE USED IN POWERMOD HPA SERIES R/A HOUSINGS ONLY

DIMENSIONS ARE IN:	INCH[MM]
UNLESS OTHERWISE STATED	
TOLERANCES:	
DECIMALS (INCH)	DECIMALS (MM) ANGLES
.XX ±.02	X ±.5 ±2°
SURFACE FINISH:	
MACHINED	128 [3.2] ✓
MOLDED	64 [1.6] ✓
MATERIAL:	SEE NOTES
FINISH:	SEE NOTES

APPROVALS	
DRAWN	CMS 10/6/04
CHECKED	DJD 1/4/05
MFG APP	CHB 1/4/05
QC APP	JA 1/4/05
ENG APP	DAM 1/4/05

ANDERSON POWER PRODUCTS		
TITLE		
PMHPA SERIES RIGHT ANGLE FEMALE CONTACT KITS		
SIZE	DWG NO.	REV.
A/A4	114545S1	0



-CAD GENERATED DRAWING-  
DO NOT MANUALLY UPDATE  
DO NOT SCALE

REV.	DESCRIPTION OF CHANGES	APPROVED	DATE

SCALE	CADFILE	SHEET
NONE	02148	1 OF 1