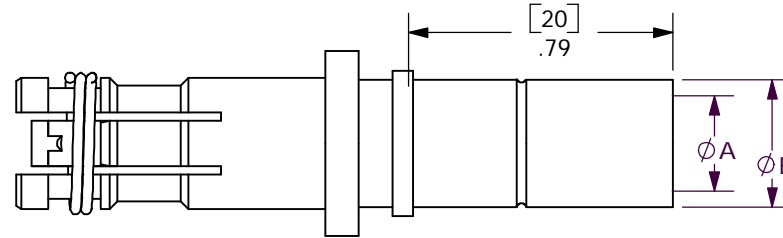
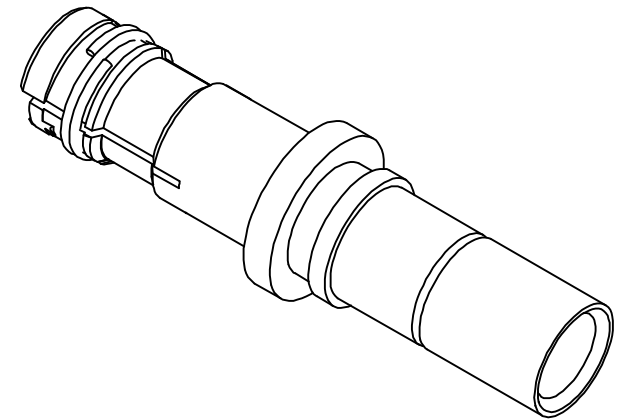
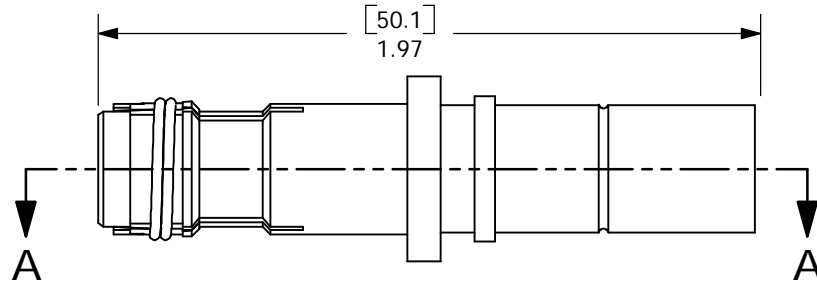
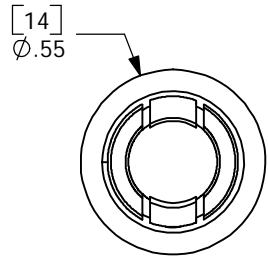


THE INFORMATION CONTAINED IN THIS DRAWING IS THE SOLE PROPERTY OF ANDERSON POWER PRODUCTS. ANY REPRODUCTION IN PART OR WHOLE WITHOUT THE WRITTEN PERMISSION OF ANDERSON POWER PRODUCTS IS PROHIBITED.

Copyright 2004

ANDERSON POWER PRODUCTS RESERVES THE RIGHT TO ALTER PRODUCT TYPES, THEIR TECHNICAL DATA, DIMENSION, STYLE AND ACCESSORIES WITHOUT PRIOR NOTIFICATION.



SECTION A-A

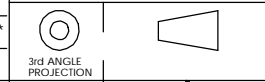
PART NO	WIRE SIZE	A		B	
		IN	mm	IN	mm
PMHPAS01	#2AWG/35mm	.36	9.1	.49	12.5
PMHPAS02	25mm	.32	8.0	.43	11.0
PMHPAS03	#4 AWG	.29	7.2	.38	9.6
PMHPAS04	16mm	.24	6.0	.33	8.4
PMHPAS05	#6 AWG	.22	5.5	.31	7.9

DIMENSIONS ARE IN:	INCH[MM]
UNLESS OTHERWISE STATED	
TOLERANCES:	
DECIMALS (INCH)	DECIMALS (MM) ANGLES
.XX ±.02	X ±.5 ±2°
SURFACE FINISH:	
MACHINED	128 [3.2] ✓
MOLDED	64 [1.6] ✓
MATERIAL:	SEE NOTES
FINISH:	SEE NOTES

APPROVALS	
DRAWN	CMS 10/5/04
CHECKED	DJD 1/4/05
MFG APP	CHB 1/4/05
QC APP	JA 1/4/05
ENG APP	DAM 1/4/05

ANDERSON POWER PRODUCTS	
TITLE PMHPA SERIES FEMALE CRIMP CONTACTS	
SIZE A/A4	DWG NO. 114544S1
SCALE NONE	CADFILE 02147
REV. 0	SHEET 1 OF 1

- NOTES:
- MATERIAL:
SOCKET BODY- COPPER ALLOY, SILVER PLATE
SPRING- STAINLESS STEEL
 - CONTACTS TO BE USED IN POWERMOD HP HOUSINGS ONLY
 - CONTACTS MUST BE CRIMPED ONTO WIRE BEFORE ASSEMBLY INTO HOUSINGS



REV.	DESCRIPTION OF CHANGES	APPROVED	DATE

-CAD GENERATED DRAWING-
DO NOT MANUALLY UPDATE
DO NOT SCALE