

PB 1011 Test Jack, PCB Mounting, Ø 2 mm, 10 A



Description

- PCB Mounting
- Test Jack, diameter 2.0 mm
- measuring and testing during operation
- Continuous electrical connection
- Resilient contacts, gold plated

Weblinks

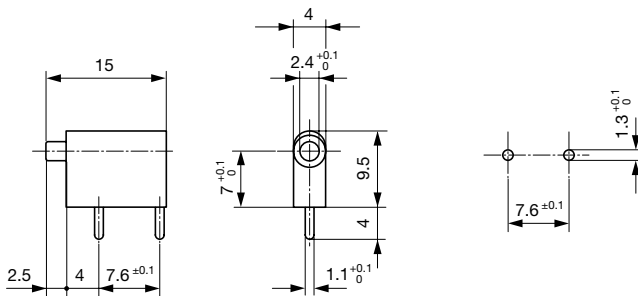
[pdf-datasheet](#), [html-datasheet](#), [General Product Information](#), [Approvals](#), [CE declaration of conformity](#), [RoHS](#), [CHINA-RoHS](#), [e-Shop](#), [SCHURTER-Stock-Check](#), [Distributor-Stock-Check](#), [CAD-Drawings](#), [Accessories](#), [Mounting instruction](#), [Detailed request for product](#)

Technical Data

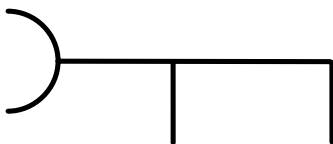
Diameter	2mm
Rated current	10A
Admissible switching power	220 W / max. 5 A or 75 VDC 440 W / max. 5 A or 50 VAC
Contact resistance	< 7 mΩ at 20 mV
Allowable Operation Temp.	-25 °C to 70 °C

Solderability	235 °C / 2 sec acc. to IEC 60068-2-20 , Test Ta, method 1
Resistance to Soldering Heat	260 °C / 5 sec acc. to IEC 60068-2-20 , Test Tb, method 1A
Weight	0.5g
Material: Housing	Thermoplastic (PC), UL 94V-2
Surface of contacts	gold plated , Thickness 0.5 μm

Dimensions



Diagrams



Variants

Product group	Color	Order Number
Test Jack	black	0040.1011
Test Jack	red	0040.1012
Test Jack	blue	0040.1014

Packaging unit 100 Pcs

Mating Inlets/Plugs

Category / Description



[Test Jacks & Probes Overview complete](#)

PS 1061 Test Probe, Ø 2 mm, 10 A

PS 1061

[Test Jacks & Probes further types to PB 1011](#)