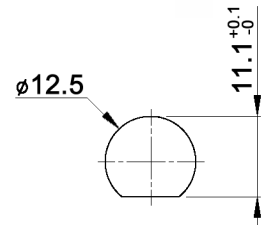


PANEL MOUNTING



CONTACT ARRANGEMENT

code for x	function	toggle towards keyway	toggle opposite to keyway
D	On-On	1-2	2-3
F	Mom-On		

code for x	function	toggle towards keyway	toggle in center	toggle opposite to keyway
E	On-Off-On			
G	Mom-Off-Mom	1-2	open	2-3
H	Mom-Off-On			

Specifications:

- Contact rating:** 3A, 250V AC / 6A, 125V AC
4A, 30V DC / 5A, 12V DC
6A, 6V DC
- Contact resistance:** 20mOhm max.
- Insulation resistance:** 1 000MOhm min. at 500V DC
- Dielectric strength:** 1 500V, 50Hz for the duration of 1 minute
- Operating temperature:** -45°C to +140°C
- Mechanical life:** min. 100 000 cycles
- Soldering conditions:** hand-soldering: max.: 420°C, 3sec., 60W
auto-soldering: max.: 270°C, 5sec.
- Mounting instruction:** max. torque: 137Ncm
- IP rating:** IP67
- Material:** Terminal / contact: brass, silver plated
Case: DAP
Housing: stainless steel, CNS9265
Bushing: copper alloy, C3604BD nickel plated
Actuator: copper alloy, C3604BD chrome plated
- Included accessories:** 1 pc. nut 15/32-32, nickel plated, 14mm wrench size
1 pc. tooth washer
1 pc. O-ring, silicone

Compliance: RohS II (2011/65/EU)

Tolerances: 0.00: ±0.25mm 0.0: ±0.40mm	Date	Name	MTW 106 x
	05/09	dr	
Modifications	Date	Name	

knitter-switch

30 18 26

Page

1/1