

### CONTACT ARRANGEMENT

code for x	function	toggle towards keyway	toggle opposite to keyway	actuation force typically
N	On-On	1-2, 4-5	2-3, 5-6	2N +/- 1N
R	Mom-On	1-2, 4-5	2-3, 5-6	2N +/- 1N

code for x	function	toggle towards keyway	toggle in center	toggle opposite to keyway	actuation force typically
P	On-Off-On	1-2, 4-5	open	2-3, 5-6	4N +/- 1N
S	Mom-Off-Mom				
T	Mom-Off-On				
PA	On-On-On	1-2, 4-5	2-3, 4-5	2-3, 5-6	4N +/- 1N
SA	Mom-On-Mom				
TA	Mom-On-On				

### Specifications:

#### Contact rating:

3A, 250V AC / 6A, 125V AC  
 4A, 30V DC / 5A, 12V DC  
 6A, 6V DC

#### Contact resistance:

20mOhm max.

#### Insulation resistance:

1 000MOhm min. at 500V DC

#### Dielectric strength:

1 500V, 50Hz for the duration of 1 minute

#### Operating temperature:

-45°C to +140°C

#### Mechanical life:

min. 200 000 cycles (SA, TA: 100 000 cycles)

#### Soldering conditions:

hand-soldering: max.: 420°C, 3sec., 60W  
 auto-soldering: max.: 270°C, 5sec.

#### Mounting instruction:

max. torque: 137Ncm

#### Material:

Terminal / contact: brass, silver plated  
 Case: DAP

Housing: stainless steel, CNS9265

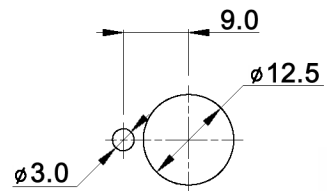
Bushing: copper alloy, C3604BD nickel plated

Actuator: copper alloy, C3604BD chrome plated

#### Included accessories:

2 pcs. nut 15/32-32, nickel plated, 14mm wrench size  
 1 pc. tooth washer  
 1 pc. locking washer

### PANEL MOUNTING



Tolerances: 0.00: ±0.25mm 0.0: ±0.40mm	Date	Name
	04/09	dr

# MTG 206 x

## knitter-switch

# 30 18 02

Page

1/1

Contact arrangement	07/10	dr
Modifications	Date	Name

