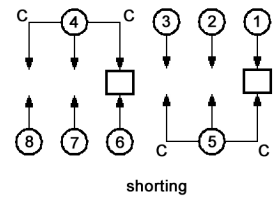
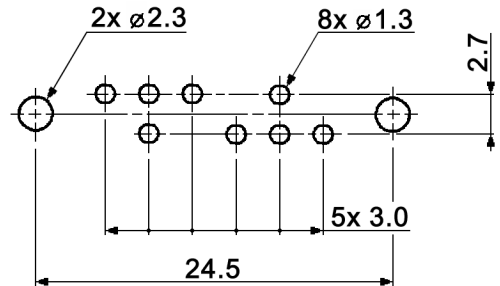


CIRCUIT DIAGRAM
C: COMMON PIN
BOTTOM VIEW



HOLE LAYOUT ± 0.05



Specifications:

Contact rating: 350mA, 30V DC
 Contact resistance: 20mOhm max.
 Insulation resistance: 100MOhm min. at 500V DC
 Dielectric strength: 500V, 50Hz for the duration of 1 minute
 Operating temperature: -20°C to +85°C
 Mechanical life: 10 000 cycles min.
 Soldering conditions: auto-soldering: max.: 260 +/-5°C, 5sec.
 Switching function: on - on - on
 Material: Terminal: brass strip, silver plated
 Frame: steel, nickel plated
 Base: phenolic resin, natural
 Contact plate: brass strip, silver plated
 Spring: SWC, temper
 Steel ball: carbon steel, natural
 Slider: POM, black



| | | |
|---|-------|------|
| Tolerances: up to 10: ±0.2mm above 10-50: ±0.3mm | Date | Name |
| | 02/12 | dr |
| | | |
| | | |
| | | |

MFP 231 P

knitter-switch

30 25 57

Page

1/1

Modifications Date Name