

PRODUCT DATASHEET

TRACK SP D85 35 W 3000 K 90RA NFL GY

TRACKLIGHT SPOT D85 35W | 3-phase tracklight spot with integrated control gear, medium wattage



AREAS OF APPLICATION

- Direct replacement for luminaires using HID lamps
- Accent lighting
- Fashion shops, accessories shops
- Retail
- Hotels, restaurants, shops

PRODUCT BENEFITS

- Included 3-phase adapter compatible with common tracks (STAFF, NORLUX, GLOBAL, NUCO, NORDIC)
- Deep reflector and black antiglare ring for minimized glare (UGR <16)
- Reflector easily replaceable thanks to bayonet catch and rubber suction pad
- No distraction of attention from the illuminated objects thanks to reduced design
- Low flicker light thanks to special electronic control gear
- 5 years guarantee

PRODUCT FEATURES

- Compact tracklight spot with integrated control gear
- Rotation angle: 350°, tilt angle: 90°
- Luminaire efficacy: up to 80 lm/W
- Available with color temperature 3000 K or 4000 K
- Very good color rendering index R_a : > 90
- Color rendering index R_{a9} : > 50



- Initial color consistency: ≤ 3 SDCM
- Equipped with reflectors with 24° beam angle
- Follows the unified LEDVANCE design language (SCALE design)
- Robust die-cast aluminum housing
- Available in matt white (like RAL9016), matt black (like RAL9004) and concrete grey (like RAL7042)

TECHNICAL DATA

Electrical data

Nominal wattage	35.00 W
Operating mode	Integrated LED driver
Nominal voltage	220...240 V
Mains frequency	50/60 Hz
Power factor λ	≥ 0.90

Luminaire control gear data

Max. no. of lum. on circuit break. B16 A	30
Max. no. of lum. on circuit break. C10 A	24
Max. no. of lum. on circuit break. C16 A	38

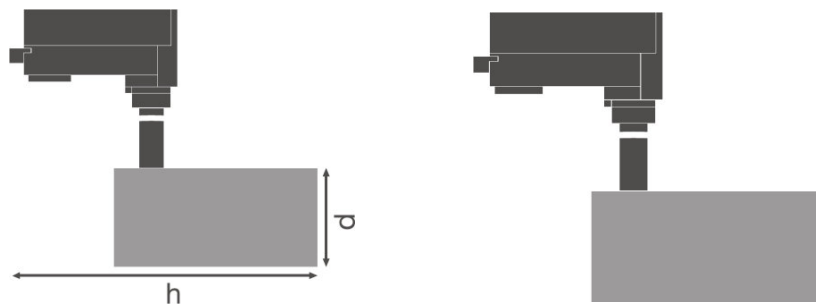
Photometrical data

Color temperature	3000 K
Color rendering index Ra	>90
Light color (designation)	Warm White
Luminous flux	2660 lm
Luminous efficacy	75 lm/W
Standard deviation of color matching	≤ 3 sdcM

Light technical data

Beam angle	24 °
------------	------

Dimensions & weight



Diameter	85.0 mm
Height	267.0 mm
Product weight	1020.00 g

Colors & materials

Housing color	Gray
Product color	Gray
Body material	Aluminum
Cover material	Polymethylmethacrylate (PMMA)

Temperatures & operating conditions

Ambient temperature range	-10...40 °C
----------------------------------	-------------

Lifespan

Lifespan L70 at 25 °C	50000 h
Lifespan L80 at 25 °C	45000 h
Lifespan L90 at 25 °C	30000 h

Additional product data

Mounting type	Surface
Mounting location	Mounting track

Capabilities

Dimmable	No
Type of connection	Adapter, 3-phasig
LED module replaceable	Not replaceable

Certificates & standards

Type of protection	IP20
Protection class	II
Protection class IK (shock resistance)	IK03
Glow Wire Test according to IEC 695-2-1	650 °C
Photobiological safety group EN62778	RG 1
Standards	CE/CB/ENEC/TÜV SÜD/EAC/RoHS

