

**Ø 2 mm-Messleitungen mit gefederten Steckern**

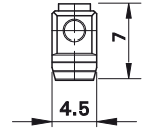
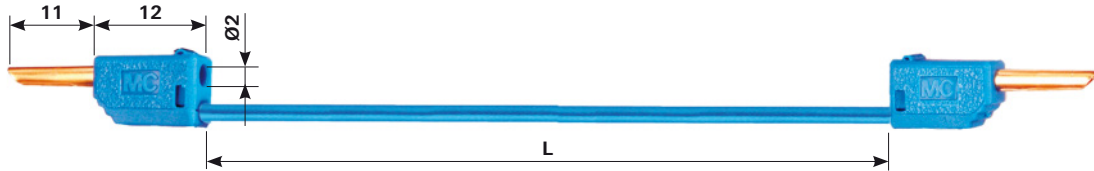
**Ø 2 mm Test Leads with Spring-loaded Plugs**

**LK2-F**

Hoch flexible Messleitung, beidseitig mit stapelbarem Ø 2 mm-Hohlstecker.

**LK2-F**

Highly flexible test lead with stackable Ø 2 mm hollow plugs on both ends.



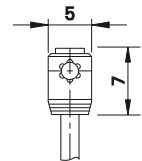
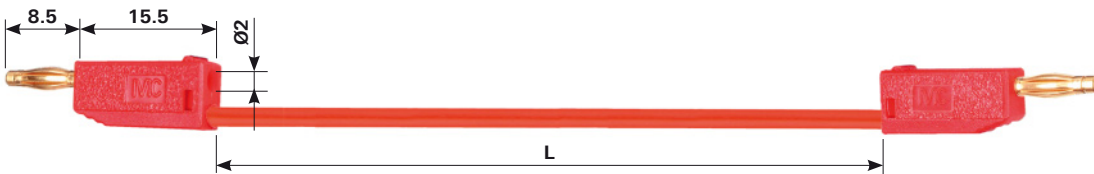
Typ Type	Bestell-Nr. Order No.	Bemessungsspannung/-strom Rated voltage/current	Leitungsquerschnitt Lead cross section		Längen L [cm] Lead lengths L [cm]	*Farben *Colours
LK2-F	28.0033-□*	30 VAC ~ 60 VDC / 10 A	0,5 mm <sup>2</sup>	Au PVC	007 (7,5 cm) 015 030 045 060	21 22 23 24 25

**LK205-A**

Hoch flexible Messleitung, beidseitig mit stapelbarem Ø 2 mm-Lamellenstecker.

**LK205-A**

Highly flexible test lead with stackable Ø 2 mm Multilam plugs on both ends.



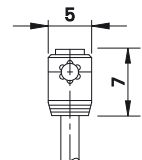
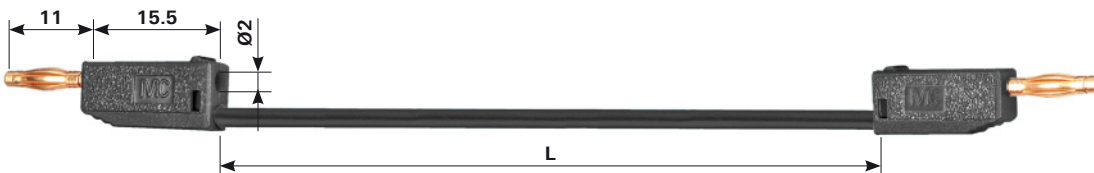
Typ Type	Bestell-Nr. Order No.	Bemessungsspannung/-strom Rated voltage/current	Leitungsquerschnitt Lead cross section		Längen L [cm] Lead lengths L [cm]	*Farben *Colours
LK205-A	28.0041-□*	30 VAC ~ 60 VDC / 10 A	0,5 mm <sup>2</sup>	Au PVC	007 (7,5 cm) 015 030 045 060	21 22 23 24 25

**LK205-X LK205 LK205/SIL**

Hoch flexible Messleitungen mit PVC- oder Silicon-Isolierung, beidseitig mit stapelbarem Ø 2 mm-Lamellenstecker.

**LK205-X LK205 LK205/SIL**

Highly flexible test leads with insulation in PVC or Silicone with stackable Ø 2 mm Multilam plugs on both ends.



Typ Type	Bestell-Nr. Order No.	Bemessungsspannung/-strom Rated voltage/current	Leitungsquerschnitt Lead cross section		Längen L [cm] Lead lengths L [cm]	*Farben *Colours
LK205-X	28.0115-□*	30 VAC ~ 60 VDC / 10 A	0,5 mm <sup>2</sup>	Ni PVC	007 (7,5 cm) 015 030 045 060	21 22 23 24 25
LK205	28.0039-□*	30 VAC ~ 60 VDC / 10 A	0,5 mm <sup>2</sup>	Au PVC	007 (7,5 cm) 015 030 045 060	21 22 23 24 25 27 28 29
LK205/SIL	28.0040-□*	30 VAC ~ 60 VDC / 10 A	0,5 mm <sup>2</sup>	Au SIL	015 030 045 060	21 22 23 24 25