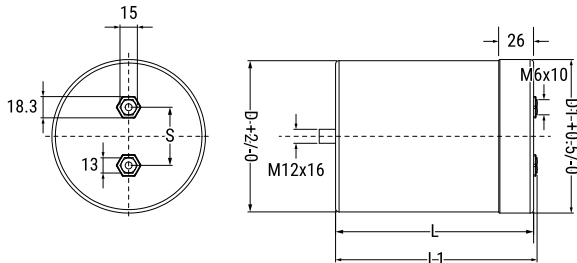


C44U\_M, Film, Metallized Polypropylene, DC Link, 350 uF, 10%, 1500 VDC



**General Information**

<b>Series:</b>	C44U_M
<b>Dielectric:</b>	Metallized Polypropylene
<b>Style:</b>	Can
<b>Features:</b>	DC Filtering, Energy Storage
<b>RoHS:</b>	Yes
<b>Lead:</b>	Screw Terminals M6
<b>AEC-Q200:</b>	No
<b>Miscellaneous:</b>	Thermal Resistance = 3.2 C/W. Weight = 8100 grams.

**Dimensions**

<b>D</b>	116mm +2mm
<b>L</b>	153mm +/-2mm
<b>L1</b>	156mm +/-2mm
<b>S</b>	50mm +/-0.3mm

**Packaging Specifications**

<b>Mounting:</b>	Bolt - M12x16
<b>Packaging:</b>	Bulk, Bag
<b>Packaging Quantity:</b>	4

**Specifications**

<b>Capacitance:</b>	350 uF
<b>Capacitance Tolerance:</b>	10%
<b>Voltage DC:</b>	1500 VDC
<b>Temperature Range:</b>	-40/+85°C
<b>Rated Temperature:</b>	75°C
<b>Insulation Resistance:</b>	0.09 MOhms
<b>Max dV/dt:</b>	10 V/us
<b>Resistance:</b>	2.3 mOhms (10kHz)
<b>Ripple Current:</b>	63 Amps (10kHz 40C), 3575 Amps (Peak)
<b>Inductance:</b>	55 nH