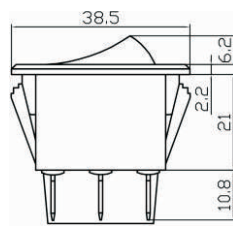


K610

On/Off Double Pole Rocker Switch

20A@12V

Fits 20mm wide x 34.5mm long slot



K611

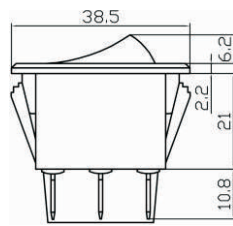
On/Off Amber LED Illuminated Rocker Switch

20A@12V, 12V LED

Fits 20mm wide x 34.5mm long slot

K613 as above Green

K614 as above Red



K631

On/Off Amber Illuminated Rocker Switch

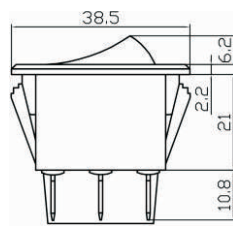
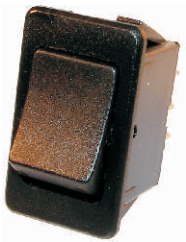
20A@12V, 12V Bulb

Fits 20mm wide x 34.5mm long slot

K632 as above Blue

K633 as above Green

K634 as above Red

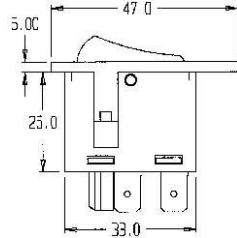
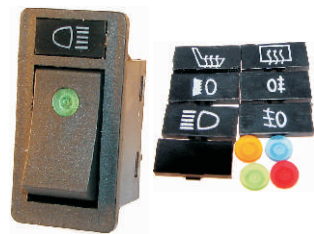


K624

On/On Double Pole Rocker Switch

20A@12V

Fits 20mm wide x 34.5mm long slot



V001

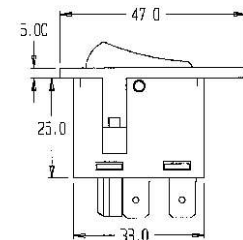
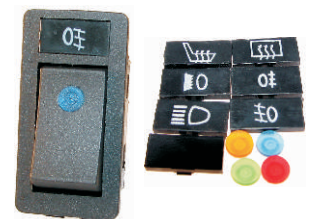
Illuminated On/Off Rocker Switch

20A@12V, 12V Bulb

4 Pin for use with relay

Supplied with symbols and coloured lenses

Fits 24mm wide x 34mm long slot



V006

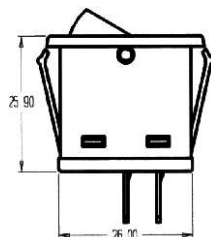
Illuminated On/Off Rocker Switch

20A@12V, 12V Bulb

3 Pin

Supplied with symbols and coloured lenses

Fits 24mm wide x 34mm long slot

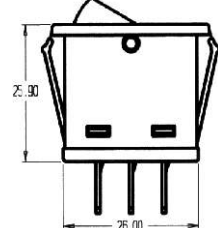


K400

On/Off Rocker Switch

16A@12V

Fits 12mm wide x 30mm long slot



K415

On/On Rocker Switch

16A@12V

Fits 12mm wide x 30mm long slot