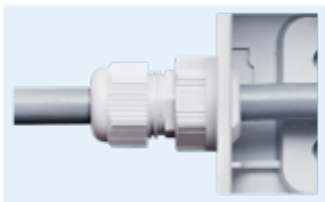

**BN 22261**
**Cable glands**

without thread for quick installation

Polyamide PA 6

- Dome nut: polyamide PA 6 V-2
- Sealing ring: polychloroprene-Nitrile rubber CR/NBR
- Gland body: polyamide PA 6 V-2
- Mounting nut: polyamide PA 6 GF30
- Moulded sealing ring: Nitrile-polytetrafluorethylene rubber NBR/PTFE
- Quick and easy installation without special tools, trouble-free mounting and dismounting from one side, locknut on the inner side dispensable, advantageous for installation in areas with limited space, installation in clearance holes with dimensions according to EN 62444, no inner thread required, continuously adjustable in wall thickness from 1 – 4 mm, integrated anchorage, wide sealing and clamping range
- Temperature range: -20 °C / +100 °C
- Protection grade: IP68



Article#	d <sub>1</sub>	Clamping range	SW1	SW2	L	d	t	RAL	Color	Code
3691111	M16x1,5	5-10	24	20	38,5	16,1-16,3	1-4	7001	■	K341-1016-01
3691112								7035	■	K341-1016-00
3691113								9005	■	K341-1016-02
3691114	M20x1,5	8-13	26	24	42,5	20,1-20,4	1-4	7001	■	K341-1020-01
3691115								7035	■	K341-1020-00
3691116								9005	■	K341-1020-02
3691117	M25x1,5	11-17	32	29	48	25,1-25,4	1-2,5	7001	■	K341-1025-01
3691119								7035	■	K341-1025-00
3691118								9005	■	K341-1025-02
3691120	M32x1,5	15-21	42	36	58,5	32,1-32,4	1-4	7001	■	K341-1032-01
3691121								7035	■	K341-1032-00
3691122								9005	■	K341-1032-02