

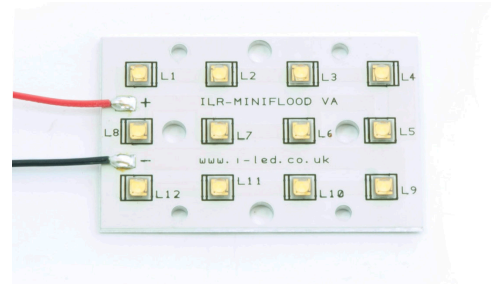
# 12 OSOLON® 80 SSL MiniFlood Colours

ILR-ON12-####-SC211-WIR200.

## Product Overview

The all new MiniFlood from ILS was designed to work exclusively with the Petunia lens from LEDiL. Each MiniFlood contains 12 OSOLON SSL 80 ThinGan (UX:3) LEDs. OSOLON SSL can be driven from 100mA-1000mA depending on the colour temperature while OSRAM's latest power chip technology remains efficient even at the highest drive currents. A low thermal resistance of 7 K/W ensures cool running and a highly efficient product. MiniFloods are compact, powerful LED light sources built on aluminium substrates for optimal thermal management.

Available with 200mm wires as standard.



## Applications

- General Lighting
- Decorative Lighting
- Task Lighting
- Retail and Entertainment Lighting
- Flood Lighting

## Technical Features

- MiniFloods contain OSRAM Opto Semi OSOLON® SSL 80 LEDs with high efficacy
- Up to 50,000 Hour lifetime to 70% of original brightness
- Mounting holes using M3 screws allows easy installation
- Size (L x W x H): 46.5x30x4mm
- Secondary lens can be fitted
- MiniFloods can be linked together to produce longer chains.
- Current range 100mA to 1000mA depending on colour temperature

\*This datasheet should be read in conjunction with the relevant OSRAM Opto Semiconductors data on the LEDs used

## Important Information and Precautions

- The MiniFlood's LEDs, when powered up, is very bright. Thus it is advised that you do not look directly at it. Turn the MiniFlood away from you and do not shine into the eyes of others.
- Do not operate MiniFlood's with a Power Supply with unlimited current. Connection to constant voltage Power Supplies that are not current limited may cause the MiniFlood to consume current above the specified maximum and cause failure or irreparable damage.
- MiniFlood's, when operated, can reach high temperatures thus there is risk of injury if they are touched.
- DO NOT HOT PLUG ON LED SIDE OF POWER SUPPLY.
- DO NOT TOUCH or PUSH on the LED as this can cause irreparable damage.

## Product Options

ILS Part Number	Dominant Wavelength *	Typical Wattage at § 350mA	Forward Voltage	Flux † at 350mA	Radiance Angle	Relevant OSRSM LED Date
ILR-ON12-DEBL-SC211-WIR200.	Deep Blue (455nm)	13.08 watts	32.4 to 42 volts	>7560mW	80° (±40°)	LDCQ7P
ILR-ON12-BLUE-SC211-WIR200.	Blue 470nm	13.08 watts	32.4 to 42 volts	>348lms	80° (±40°)	LBCP7P
ILR-ON12-TRGR-SC211-WIR200.	True Green (528nm)	13.08 watts	32.4 to 42 volts	>1344lm	80° (±40°)	LTCP7P
ILR-ON12-YELL-SC211-WIR200.	Yellow (587nm)	9.72 watts	22 to 31.2 volts	>852lm	80° (±40°)	LYCP7P
ILR-ON12-RDOR-SC211-WIR200.	Red-Orange (617nm)	9.24 watts	22 to 31.2 volts	>1080lm	80° (±40°)	LACP7P
ILR-ON12-RED1-SC211-WIR200.	Red (625nm)	10.92 watts	22 to 31.2 volts	> 852	80° (±40°)	LRCP7P
ILR-ON12-HYRE-SC211-WIR200.	Hyper Red (656nm)	9 watts	22 to 31.2 volts	>4800mW	80° (±40°)	LHCP7P
ILR-ON12-FRED-SC211-WIR200.	Far Red (730nm)	7.8 watts	19.2 to 27.6 volts	>2520mW	80° (±40°)	GFC-S8PM1.24

\* Due to the special conditions of the manufacturing processes of LEDs, the typical data of technical parameters can only reflect statistical figures and do not necessarily correspond to the actual parameters of each single product which could differ from the typical data.

§ Tolerance +/- 10%

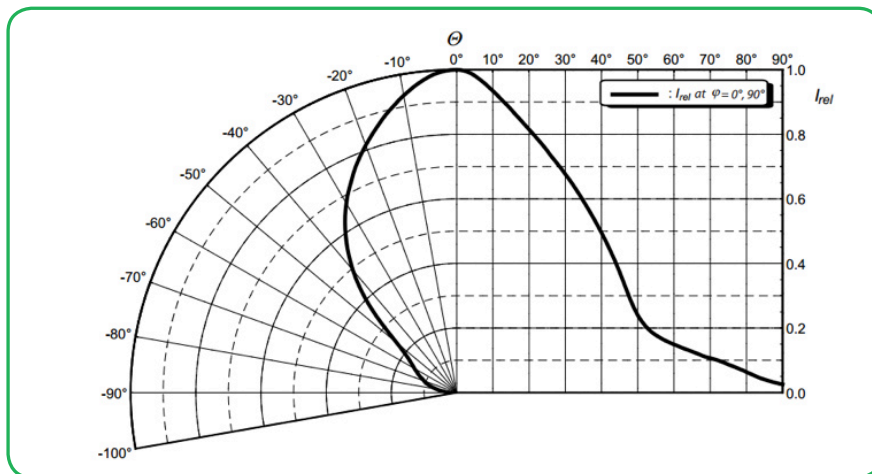
† Measured with 20mS 350mA pulse at 25 °c

## Minimum and Maximum Ratings

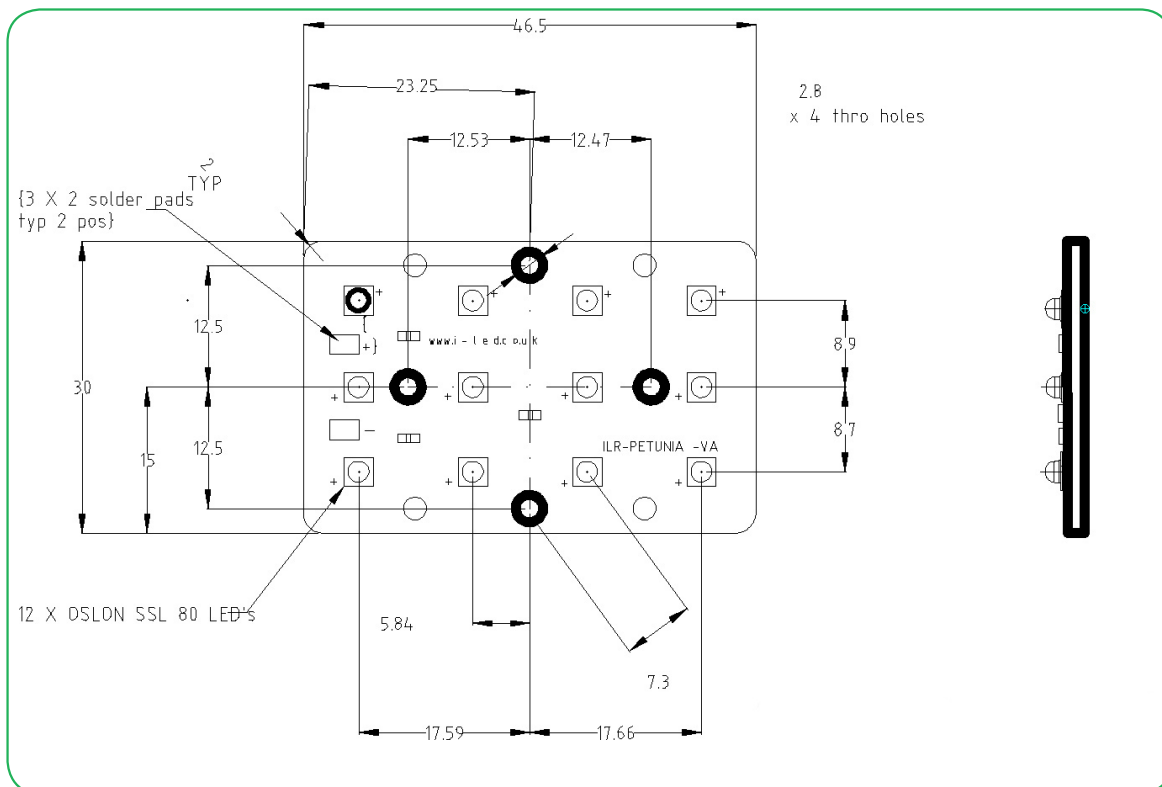
ILS Part Number	Operating Temperature at Tc-Point [ °C ] *	Storage Temperature [ °C ] *	Maximum Forward Current per chip [mA] *	Reverse Voltage [Vdc] *
ILR-ON12-DEBL-SC211-WIR200.	70°C max	- 40 to 110 °C	1000mA max	not designed for reverse voltage
ILR-ON12-BLUE-SC211-WIR200.	70°C max	- 40 to 110 °C	1000mA max	not designed for reverse voltage
ILR-ON12-TRGR-SC211-WIR200.	70°C max	- 40 to 110 °C	1000mA max	not designed for reverse voltage
ILR-ON12-YELL-SC211-WIR200.	70°C max	- 40 to 110 °C	1000mA max	not designed for reverse voltage
ILR-ON12-RDOR-SC211-WIR200.	70°C max	- 40 to 110 °C	1000mA max	not designed for reverse voltage
ILR-ON12-RED1-SC211-WIR200.	70°C max	- 40 to 110 °C	1000mA max	not designed for reverse voltage
ILR-ON12-HYRE-SC211-WIR200.	70°C max	- 40 to 110 °C	1000mA max	not designed for reverse voltage
ILR-ON12-FRED-SC211-WIR200.	70°C max	- 40 to 110 °C	1000mA max	not designed for reverse voltage

\* Exceeding maximum ratings for operating and storage temperature will reduce expected life time or destroy the LED module. Exceeding maximum ratings for operating voltage will cause hazardous overload and will likely destroy the LED module. The temperature of the LED module must be measured at the Tc-Point according to EN60598-1 in a thermally constant status with a temperature sensor or a temperature sensitive label.

Radiation of single LED



Technical Drawing with cables (mm)



3D drawing files are available on request from ILS. Please call or email



## 12 Oslon 80 MiniFlood Lens and Reflector Options

LEDiL precision-engineered Lenses and Reflectors allow for rapid deployment of all types of light fixtures, including street lights, wall-wash, high-bay, sconces, emergency beacons, parking garage/low-bay, MR and AR down lights, and dock lights. Precision engineered for maximum efficiency and durability, LEDiL Lenses and Reflectors are released alongside the latest product releases from our LED suppliers. You select the best LED for the application; choose LEDiL and you're selecting the best optical solution as well.

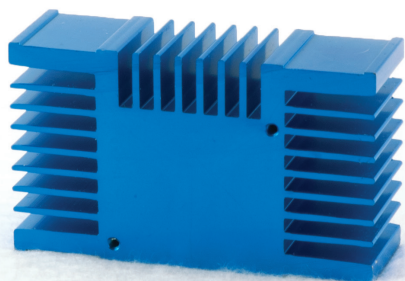
	OSLON+ 80	OSLON+ 150	
ILS Part Number	Beam Angle (FWHM)	Beam Angle (FWHM)	Mounting Type
C12528_PETUNIA	28	28	Pins and Lens

## 12 Oslon 80 MiniFlood Heat Sink Options

ILS has recently introduced a series of Aluminium Alloy Heat Sinks to be used with our standard range of PowerStars and PowerClusters. These Heat Sinks are supplied with fixing screws for the light engine and for fixing to a base plate. They also come with Thermal Interface Material (TIM) attached to the top surface. Available in Black, Red, Silver and Blue colour variants. More versions will be introduced over the coming months and we are also happy to manufacture custom Heat Sinks to your request.

	Operates under the recommended ILS junction temperature
	Operates under the recommended LED maximum junction temperature
	Not suitable for use
N/A	Heat Sink not designed for use with this product











ILS Product		no heatsink in free air	ILA-HEATSINK-STAR-50X20MM.	ILA-HEATSINK-STAR-50X40MM.	ILA-HEATSINK-STAR-50X60MM.	ILA-HEATSINKSTAR-50X80MM.	ILA-HEATSINK-CLUSTER-70X70X55MM.	ILA-HEATSINK-CLUSTER-78X46X25MM.
Oslon 12 LED Petunia	350mA		N/A	N/A	N/A	N/A		
	700mA		N/A	N/A	N/A	N/A		
	1000mA		N/A	N/A	N/A	N/A		



## 12 Oslon 80 MiniFlood Power Supply Options

ILS has a comprehensive range of standard Power Supplies. The table below shows the total number of ILS products each Power Supply can drive.

Additional Power Supplies are being introduced so please call us or check our website for the latest offering.

ILS Driver Part No.	Rating	Current	OSLON® 12 Miniflood	
IZC035-017F-0067A-SA	17	350mA	1	
IZC035-018T-9500A-SA	18	350mA dim	1	
IZC035-035F-9067C-QA	35	350mA	2	
IZC070-035F-0067C-SA	35	700mA	1	
IZC045-040A-9266C-SA	40	450mA dim	1	
IZC105-040A-0067C-QA	42	1050mA	1*	
IZC070-050A-9267C-SA	50	700mA	2	
IZC050-060F-9067C-QA	60	500mA	1	
IZC105-060F-9067C-QA	60	1050mA	1*	
IZC070-075A-9267C-SA	75	700mA dim	2	

\* Please take notice of the colour temperature, warmer Minifloods perform can not be driven at 1000mA please look at Minimum and Maximum tables (page 2)

## Thermal Interface Material Options

ILS have produced a range of High-performance, cost effective Thermal Interface Materials to match perfectly their standard products.

Our product fills the air pockets between the two surfaces, forming a continuous layer to conduct heat away from the LED to the Heat Sink.

ILS offer our TIM in three options – double sided adhesive, single sided adhesive and non adhesive.

Product	Non Adhesive	Single Sided Adhesive	Double Sided Adhesive
<b>OSLON 12 Petunia</b>	ILA-TIM-PETUNIA-0A	ILA-TIM-PETUNIA-1A	ILA-TIM-PETUNIA-2A

Other sizes are available, including customised parts

## Assembly Information

- In order to optimise the thermal management, the metal surface needs to be clean (dirt and oil free) and planar for the best contact with the LED module. A thermal grease or heat transfer material is highly recommended.

## Safety Information

- The LED module itself and all its components must not be mechanically stressed.
- Assembly must not damage or destroy conducting paths on the circuit board.
- The mounting of the module is carried out by attaching it at the mounting holes. Metal mounting screws must be insulated with synthetic washers to prevent circuit board damage and possible short circuiting.
- To avoid mechanical damage to the connecting cables, the boards should be attached securely to the intended substrate. Heavy vibration should be avoided.
- Observe correct polarity!
- Depending on the product, incorrect polarity will lead to emission of red or no light. The module can be destroyed! Pay attention to standard ESD precautions when installing the Petunia.
- The Petunia, as manufactured, have no conformal coating and therefore offer no inherent protection against corrosion.
- Damage by corrosion will not be accepted as a materials defect claim. It is the user's responsibility to provide suitable protection against corrosive agents such as moisture and condensation and other harmful elements.
- For outdoor usage, housing is definitely required to protect the board against environmental influences. The design of the housing must correspond to the IP standards in the application. It is also the responsibility of the user to ensure any housing or modifications keep the Tc junction temperature to within stated ranges.
- To also ease the luminaire/installation approval, electronic control gear for LED or LED modules should carry the CE mark and be ENEC certified. In Europe the declarations of conformity must include the following standards: CE: EC 61374-2-13, EN 55015, IEC 61547 and IEC 61000-3-2 - ENEC: 61374-2-13 and IEC/EN 62384.
- The evaluation of eye safety occurs according to the standard IEC 62471:2006 ("photobiological safety of lamps and lamp systems"). Within the risk grouping system of this CIE standard, the LED specified in this data sheet falls into the class moderate risk" (exposure time 0.25s). Under real circumstances (for exposure time, eye pupils, observation distance), it is assumed that no endangerment to the eye exists from these devices. As a matter of principle, however, it should be mentioned that intense light sources have a high secondary exposure potential due to their blinding effect. As is also true when viewing other bright light sources (e.g. headlights), temporary reduction in visual acuity and afterimages can occur, leading to irritation, annoyance, visual impairment and even accidents, depending on the situation.

## For further information please contact ILS

The values contained in this data sheet can change due to technical innovations. Any such changes will be made without separate notification.