

**Industrial Ethernet  
IE-FCM-RJ45-FJ-B**

Service interface FrontCom<sup>®</sup> Micro with RJ45 in IP65

## Industrial Ethernet IE-FCM-RJ45-FJ-B

**Weidmüller Interface GmbH & Co. KG**  
 Klingenbergstraße 16  
 D-32758 Detmold  
 Germany  
 Fon: +49 5231 1429-0  
 Fax: +49 5231 14292083  
 www.weidmueller.com

## Technische Daten

### Dimensions and weights

Wall thickness, max.	3 mm	Wall thickness, min.	1 mm
Net weight	40 g		

### Temperatures

Operating temperature	-40 °C...70 °C	Storage temperature	
Installation temperature			

### General data

Connection 1	RJ45	Connection 2	IDC
Description of article	FrontCom Micro RJ45 module	Wiring	TIA-568B
Colour	Black	Housing main material	PA UL 94 V0
Insulation cross-section, max.	1,6 mm	Category	Cat.6 <sub>A</sub> / Class E <sub>A</sub> (ISO/IEC 11801 2010)
Contact surface	Gold over nickel	Connection diameter, solid	0.4...0.64 mm
Connection diameter, flexible	0.48...0.76 mm	Conductor connection cross-section, flexible (AWG)	AWG 26...AWG 22
Sheath diameter, min.	5,5 mm	Shielding	360° shield contact
Type of mounting	Cabinet, Distribution box	Shielding	360° shield contact
Protection degree	IP65 in acc. with DIN EN 60529	Plugging cycles	750

### Electrical properties

PoE / PoE+	conforming to IEEE 802.3af
------------	----------------------------

### Standards

Connector standard	IEC 60603-7-51	Certificate no. (cULus)	E316369
--------------------	----------------	-------------------------	---------

### Downloads

Installation video	STEADYTEC® assembly instruction RJ45 field attachable module_EN_HD.mp4	UL Approval	DUXR.E316369.pdf
--------------------	--	-------------	------------------

### Classifications

ETIM 3.0	EC001134	ETIM 4.0	EC001134
ETIM 5.0	EC001134	ETIM 6.0	EC001121
eClass 5.1	27-25-05-04	eClass 6.2	27-25-05-04
eClass 7.1	27-25-05-04	eClass 8.1	19-17-01-25
eClass 9.0	19-17-01-25	eClass 9.1	27-18-90-90

**Datenblatt**

**Industrial Ethernet  
IE-FCM-RJ45-FJ-B**

**Weidmüller Interface GmbH & Co. KG**  
Klingenbergstraße 16  
D-32758 Detmold  
Germany  
Fon: +49 5231 1429-0  
Fax: +49 5231 14292083  
www.weidmueller.com

**Technische Daten**

**Approvals**

Approvals



ROHS

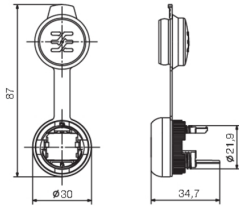
Conform

## Industrial Ethernet IE-FCM-RJ45-FJ-B

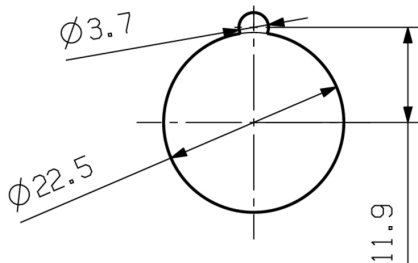
**Weidmüller Interface GmbH & Co. KG**  
Klingenbergstraße 16  
D-32758 Detmold  
Germany  
Fon: +49 5231 1429-0  
Fax: +49 5231 14292083  
www.weidmueller.com

## Zeichnungen

### Dimensioned drawing



### Installation cut-out



## Industrial Ethernet IE-FCM-RJ45-FJ-B

**Weidmüller Interface GmbH & Co. KG**  
 Klingenbergstraße 16  
 D-32758 Detmold  
 Germany  
 Fon: +49 5231 1429-0  
 Fax: +49 5231 14292083  
 www.weidmueller.com

## Accessories

### Accessories



SM is a MultiCard marker for labelling control and signalling devices. The tags are clipped into the carriers or attached by means of the adhesive film already fitted to them. Customised tags can be created with the PrintJet PRO, MCP Plus plotter, MCP Basic or MC-Mobilo marking systems.

- Users can quickly produce tags to suit their needs
- No need to stock expensive standard tags
- Highly resistant printing quality when using the PrintJet as a substitute for engraving
- For extreme demands, we recommend the ETO SM protective film
- Holders can be used for the 22-mm-diameter push-buttons from Siemens, ABB, Moeller and Télémécanique

### General ordering data

Type	Order No.	Version	GTIN (EAN)	Qty.
SM-H 27/18 SW	<a href="#">1716630000</a>	SwitchMark, Accessories, 48 x 27 mm, Black	4008190343194 25 Stück	

### IE fastening tool



The mounting tool helps you to tighten the locknut when mounting the flange of version 04.

#### Comments:

- Standard tool
- made from tough plastic

### General ordering data

Type	Order No.	Version	GTIN (EAN)	Qty.
IE-FISP-V4	<a href="#">9204370000</a>	Assembly tool	4032248660780 2 Stück	

**Industrial Ethernet  
IE-FCM-RJ45-FJ-B**

**Weidmüller Interface GmbH & Co. KG**  
 Klingenbergstraße 16  
 D-32758 Detmold  
 Germany  
 Fon: +49 5231 1429-0  
 Fax: +49 5231 14292083  
 www.weidmueller.com

**Accessories**

**Blank**



SM is a MultiCard marker for labelling control and signalling devices. The tags are clipped into the carriers or attached by means of the adhesive film already fitted to them. Customised tags can be created with the PrintJet PRO, MCP Plus plotter, MCP Basic or MC-Mobilo marking systems.

- Users can quickly produce tags to suit their needs
- No need to stock expensive standard tags
- Highly resistant printing quality when using the PrintJet as a substitute for engraving
- For extreme demands, we recommend the ETO SM protective film
- Holders can be used for the 22-mm-diameter push-buttons from Siemens, ABB, Moeller and Télémécanique

**General ordering data**

Type	Order No.	Version	GTIN (EAN)	Qty.
SM 27/18 MC	<a href="#">1699860000</a>	SwitchMark, Device	4008190892302	80 Stück
NE WS		markers, x 27 mm, SwitchMark holder, White		