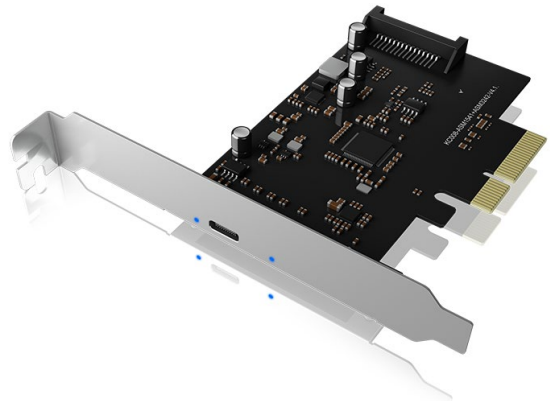


ICY BOX IB-PCI1901-C32

USB Type-C® PCIe controller card

Key features

- Expands your desktop PC to one more USB Type-C® 3.2 (Gen 2x2) port
- Supports USB data transfer rates of up to 20 Gbit/s
- PCI express base specification revision 3.0 (x4 lanes)
- Fits into PCIe x4, x8 or x16 slot
- Asmedia ASM3242 and ASM1541 USB 3.2 (Gen 2x2) controllers
- LED indicators indicate power and connection



Packing content

1x IB-PCI1901-C32, 1x additional low-profile bracket,
1x set of screws, 1x screw driver, 1x manual

USB 3.2 (Gen 2x2) PCIe controller card

This new ICY BOX PCIe expansion card IB-PCI1901-C32 is the highly flexible and cost-effective alternative to the not yet widespread USB4 standard. It offers full support for the new USB 3.2 (Gen 2x2) specification for any motherboard with a PCIe 3.0 x4 slot. Without purchasing a new motherboard, the IB-PCI1901-C32 can be easily added to a slot of the existing board for system upgrades to enjoy transfer rates of up to 20 Gbps.

Technical data

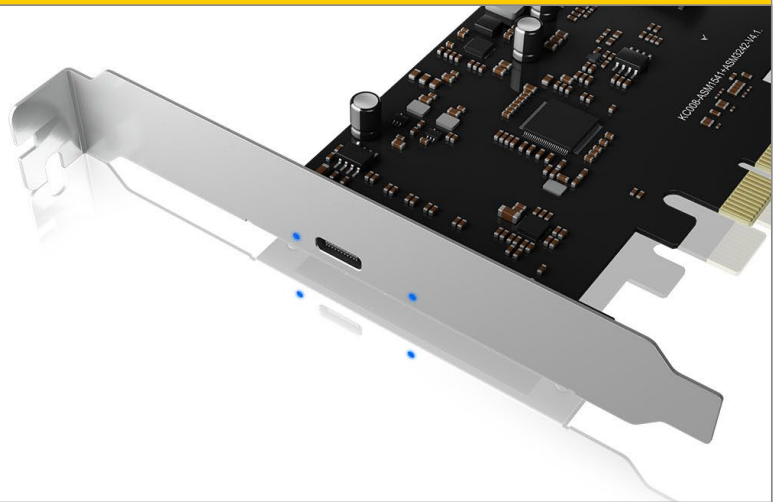
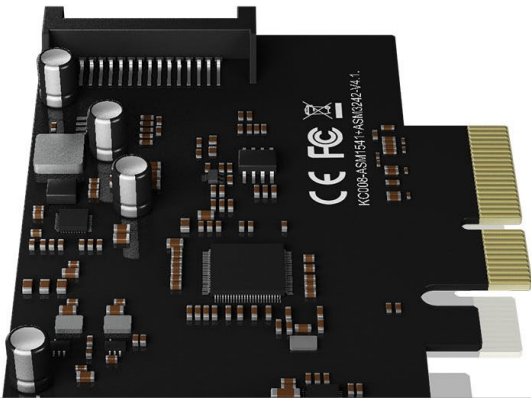
Model	IB-PCI1901-C32
Article no.	60748
EAN code	4250078170853
Brand	ICY BOX
Colour	Black
Material	Metal, plastic
Connection to hostcomputer	PCIe x4
Transfer rate	Up to 20 Gbit/s

External interface

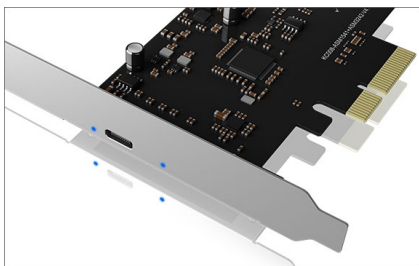
LED	USB Type-C® Power and access
Power supply	1x 15 pin SATA

System requirements

Windows®
One available x4, x8 or x16 PCI Express slot (at least PCI Express Gen. 3.0 x4 lanes).
Power supply with one free SATA 15 pin power plug
Note:
The IB-PCI1901-C32 adopts the PCIe Gen 3.0 x4 (32 Gbit/s) interface connector design. In order to get USB 3.2 (Gen 2x2) performance, please use a PCIe slot based on PCI Express Generation 3.0 x4 lanes for card installation.
However, some PC systems do not support PCIe Gen 3.0 specification, so that IB-PCI1901-C32 cannot support full-power performances (20 Gbit/s). Please double-check your PC system for system detail information in this respect.

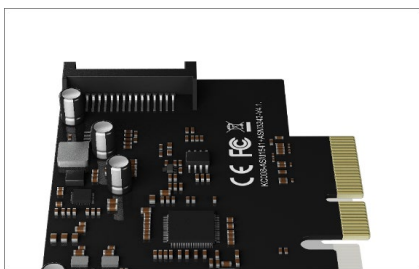


ICY BOX **IB-PCI1901-C32** USB Type-C[®] PCIe controller card



USB 3.2 (Gen 2x2)

The new IB-PCI1901-C32 expansion card supports USB 3.2 (Gen 2x2) for both AMD and Intel platforms and offers data transfer rates of up to 20 Gbit/s, which is double that of the previous generation. With the USB Type-C[®] connector design and backward compatibility with USB 2.0/3.0/3.1, the new expansion card offers a cost-effective way for users to upgrade to the USB 3.2 (Gen 2x2) specification.



High Quality

Also the IB-PCI1901-C32 follows the highest ICY BOX quality standards and uses the best available components. The new PCIe expansion card has been thoroughly tested and is ready for immediate use and delivers reliable performance at a reasonable price.



Perfect Symbiosis

USB 3.2 (Gen 2x2)-capable external enclosures are far from being a standard, but ICY BOX already has them and thus belongs to the pioneer of this technology! Be surprised by the incredible data transfer rates of the ICY BOX expansion card IB-PCI1901-C32 in combination with the IB-1916M-C32-NVMe enclosure solution!

Logistical data

Packing unit: 60 pcs./carton
Total weight: 7.5 kg/carton
Gross weight (with packing): 0.117 kg
Net weight: 0.043 kg

Dimension/carton: 5306x295x397 mm
Dimension (with packing): 125x25x130 mm
Dimension of article: 105x19x65 mm
Country of origin: China