

Limited Warranty and Limitation of Liability

This Fluke product will be free from defects in material and workmanship for two years from the date of purchase. This warranty does not cover fuses, disposable batteries, or damage from accident, neglect, misuse, alteration, contamination, or abnormal conditions of operation or handling. Resellers are not authorized to extend any other warranty on Fluke's behalf. To obtain service during the warranty period, contact your nearest Fluke authorized service center to obtain return authorization information, then send the product to that Service Center with a description of the problem.

THIS WARRANTY IS YOUR ONLY REMEDY. NO OTHER WARRANTIES, SUCH AS FITNESS FOR A PARTICULAR PURPOSE, ARE EXPRESSED OR IMPLIED. FLUKE IS NOT LIABLE FOR ANY SPECIAL, INDIRECT, INCIDENTAL OR CONSEQUENTIAL DAMAGES OR LOSSES, ARISING FROM ANY CAUSE OR THEORY. Since some states or countries do not allow the exclusion or limitation of an implied warranty or of incidental or consequential damages, this limitation of liability may not apply to you.

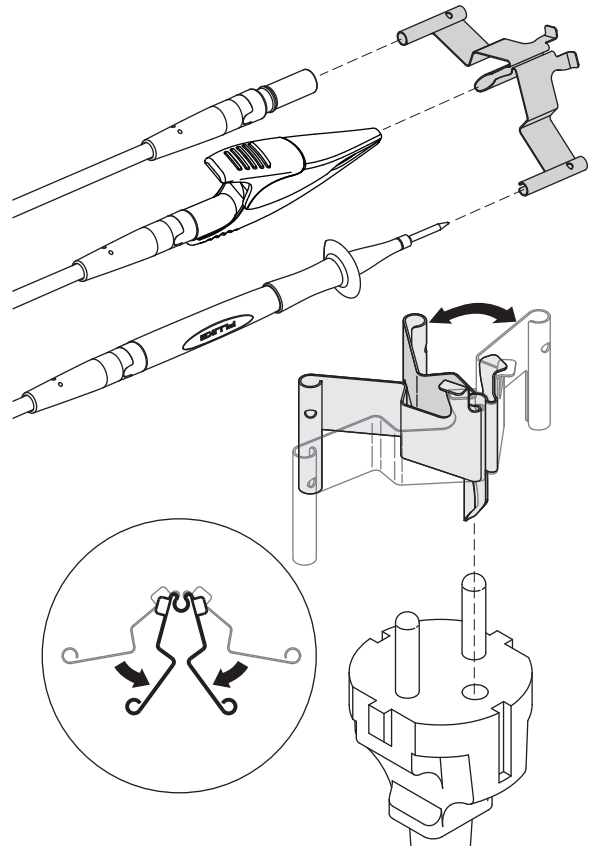
Fluke Corporation
P.O. Box 9090
Everett, WA 98206-9090
U.S.A.

Fluke Europe B.V.
P.O. Box 1186
5602 BD Eindhoven
The Netherlands

11/99

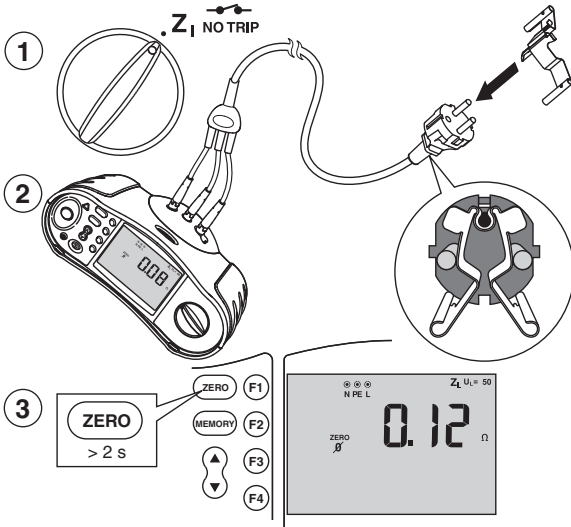
FLUKE®

Zero Adapter Quick Reference Guide

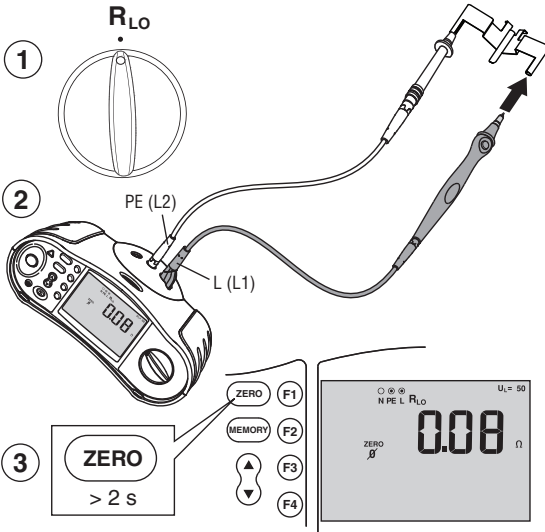


PN 3302261
April 2008
© 2008 Fluke Corporation. All rights reserved.
Visit Fluke's website at www.fluke.com

Z₁ Loop • Boucle • Schleife



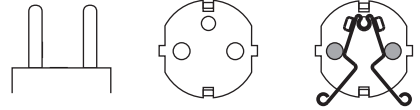
R_{Lo} Continuity • Continuité • Niederohm



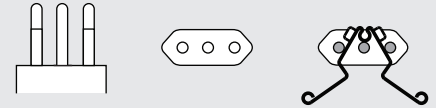
Zero Adapter Orientation

- Country Specific Mains Cords
- Cordons secteur spécifiques au pays
- Länderspezifische Netztestkabel

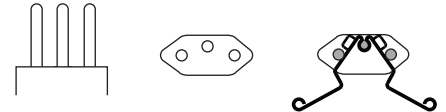
Euro



Italy



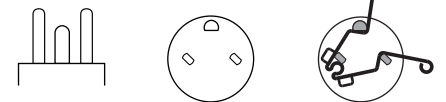
Swiss



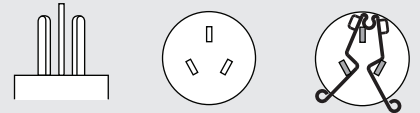
UK



Denmark



Australia



US

