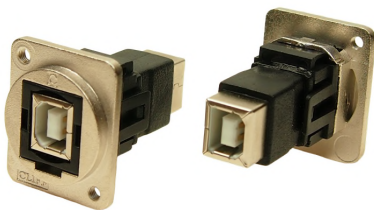
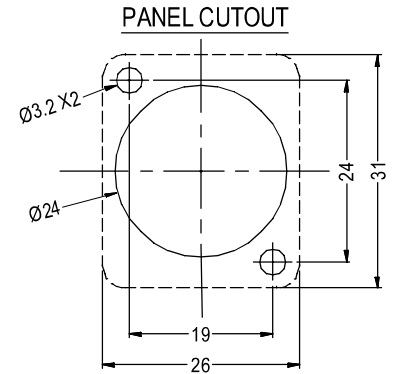
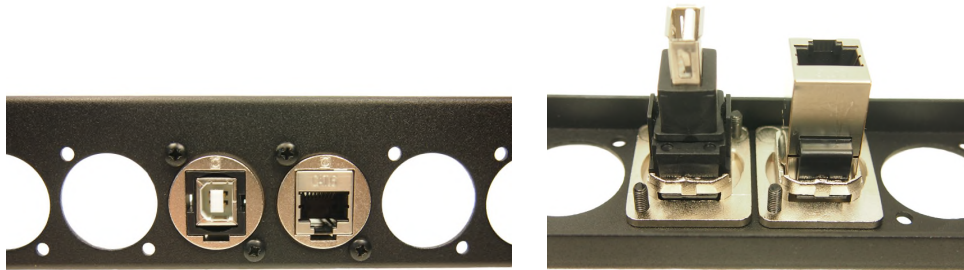


CLIFF

FEEDTHROUGH CONNECTORS - M3 Holes

Our best selling Feedthrough Connectors are now available with M3 holes, for quick and easy rear panel mounting. Frames are made from diecast metal with a Nickel or Black plating.



Part No.
CP30203NM3

DESCRIPTION
USB 2.0 B to USB 2.0 B, Metal frame



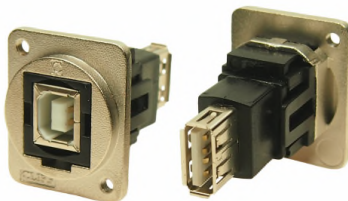
Part No.
CP30205NM3

DESCRIPTION
USB 3.0 A to USB 3.0 A, Metal frame



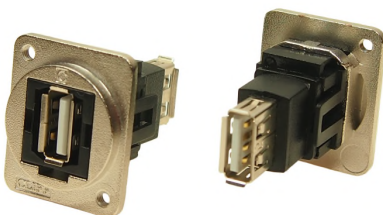
Part No.
CP30205NM3B

DESCRIPTION
USB 3.0 A to USB 3.0 A, Black metal frame



Part No.
CP30207NM3

DESCRIPTION
USB 2.0 B to USB 2.0 A, Metal frame



Part No.
CP30208NM3

DESCRIPTION
USB 2.0 A to USB 2.0 A, Metal frame

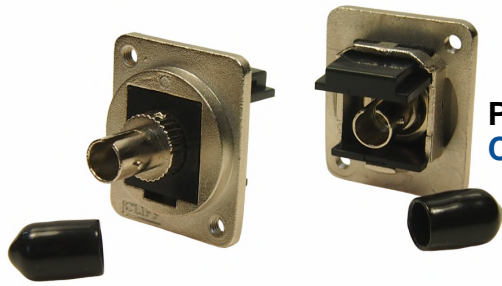


Part No.
CP30208NM3B

DESCRIPTION
USB 2.0 A to USB 2.0 A, Black metal frame

CLIFF

FEEDTHROUGH CONNECTORS - M3 Holes



Part No.
CP30218M3

DESCRIPTION
ST Fibre, Metal frame



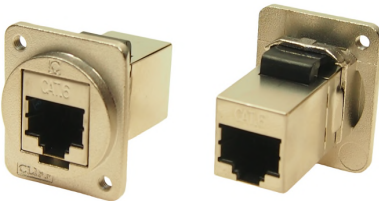
Part No.
CP30218M3B

DESCRIPTION
ST Fibre, Black metal frame



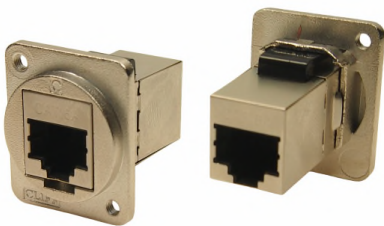
Part No.
CP30220M3B

DESCRIPTION
UTP Cat5e RJ45-RJ45, Black metal frame



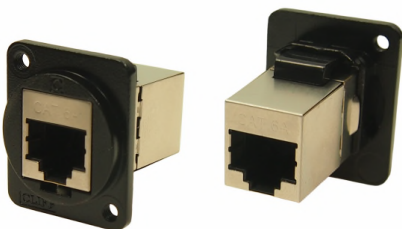
Part No.
CP30222SM3

DESCRIPTION
FTP Cat6 RJ45-RJ45, Shielded, Metal frame



Part No.
CP30225SM3

DESCRIPTION
FTP Cat6A RJ45-RJ45, Shielded, Metal frame



Part No.
CP30225SM3B

DESCRIPTION
FTP Cat6A RJ45-RJ45, Shielded, Black Metal frame