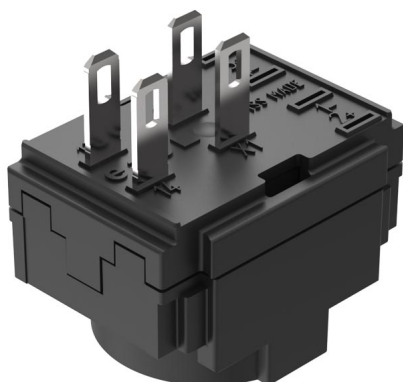


EAO – Your Expert Partner for Human Machine Interfaces

61-8440.12 - Switching element for pushbutton and keylock- and selector switch 2 positions

61-8440.12 - Switching element for pushbutton and keylock- and selector switch 2 positions



Attention: The preview is based on a sample product. This can differ from your current configuration.

Other Attributes

Weight 0,007 kg

Connection Method

Terminal Solder 2.8 x 0.5 mm

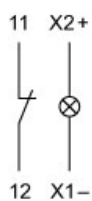
Switching element

Switching current 5 A
Switching system Snap-action switching element
Contact material Silver
Contacts 1 NC
Switching voltage 250 V AC/DC

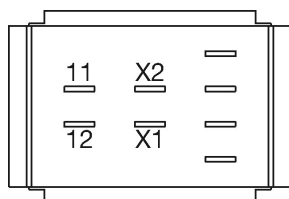
EAO – Your Expert Partner for Human Machine Interfaces

61-8440.12 - Switching element for pushbutton and keylock- and selector switch 2 positions

Wiring diagram



Component layout



Additional information

with lamp terminal

We offer a dismantling tool Part No. 61-9711.0 for dismantling of the switching element

Legend

Contacts: NC = Normally closed