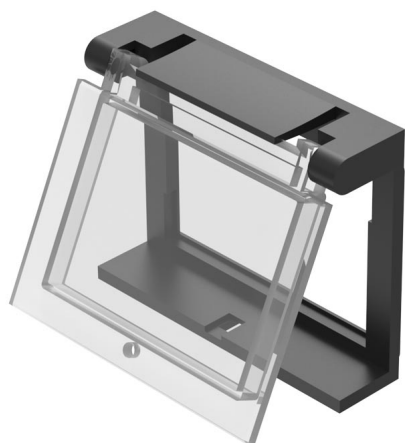


# EAO – Your Expert Partner for Human Machine Interfaces

22-925 - Protective cover

## 22-925 - Protective cover



*Attention: The preview is based on a sample product. This can differ from your current configuration.*

### Mounting

Mounting cut-out 22 mm x 30 mm  
Design flush

### Other Attributes

Weight 0,004 kg  
Material Plastic  
Dimension mm

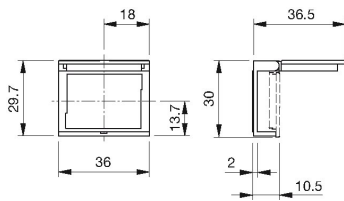
### IP-Rating

Front protection IP65

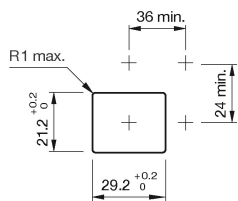
### Optics

Optics transparent

### Dimensions



### Mounting cut-outs



### Additional information

Please note that bigger minimum distances are necessary  
Use only flush front bezel  
hinged, with means for sealing  
Front panel thickness reduced by 2 mm