

### 01-030.002 - Indicator actuator



*Attention: The preview is based on a sample product. This can differ from your current configuration.*

#### Mounting

Mounting cut-out  
Design Ø 16 mm  
raised

#### Front

Front dimension  
Front shape Ø 18 mm  
round

#### Other Attributes

Weight 0,006 kg

#### IP-Rating

Front protection IP40

#### Connection Method

Terminal Solder 2.8 x 0.5 mm

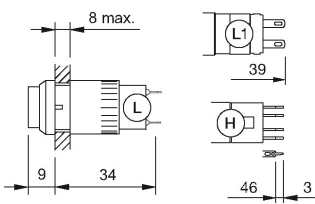
#### Function

Indicator

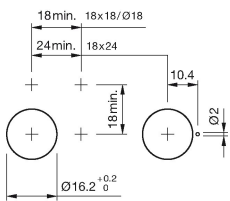
# EAO – Your Expert Partner for Human Machine Interfaces

01-030.002 - Indicator actuator

## Dimensions



## Mounting cut-outs



## Wiring diagram

