

**DT-2RV3-A7**

DRAWING NUMBER

ISSUE

10  
9  
15  
12  
15

REVISIONS

A	CO17725	L E B	20 JUNE 63
B	CO24941	M B S	2 DEC 68
C	CO26075	M B S	26 AUG 69
D	CO37528	C J H	31 AUG 76
E	CO38280	P K	31 MAR 77
F	CO46028	W J M	13 JUN 79
G	CO61634	Y S K	17 JUL 87

CHECK

L.S.D.

21 JUN 63

CHECK

L E B

20 JUNE 63

CHECK

L E B

20 JUNE 63

CHECK

L E B

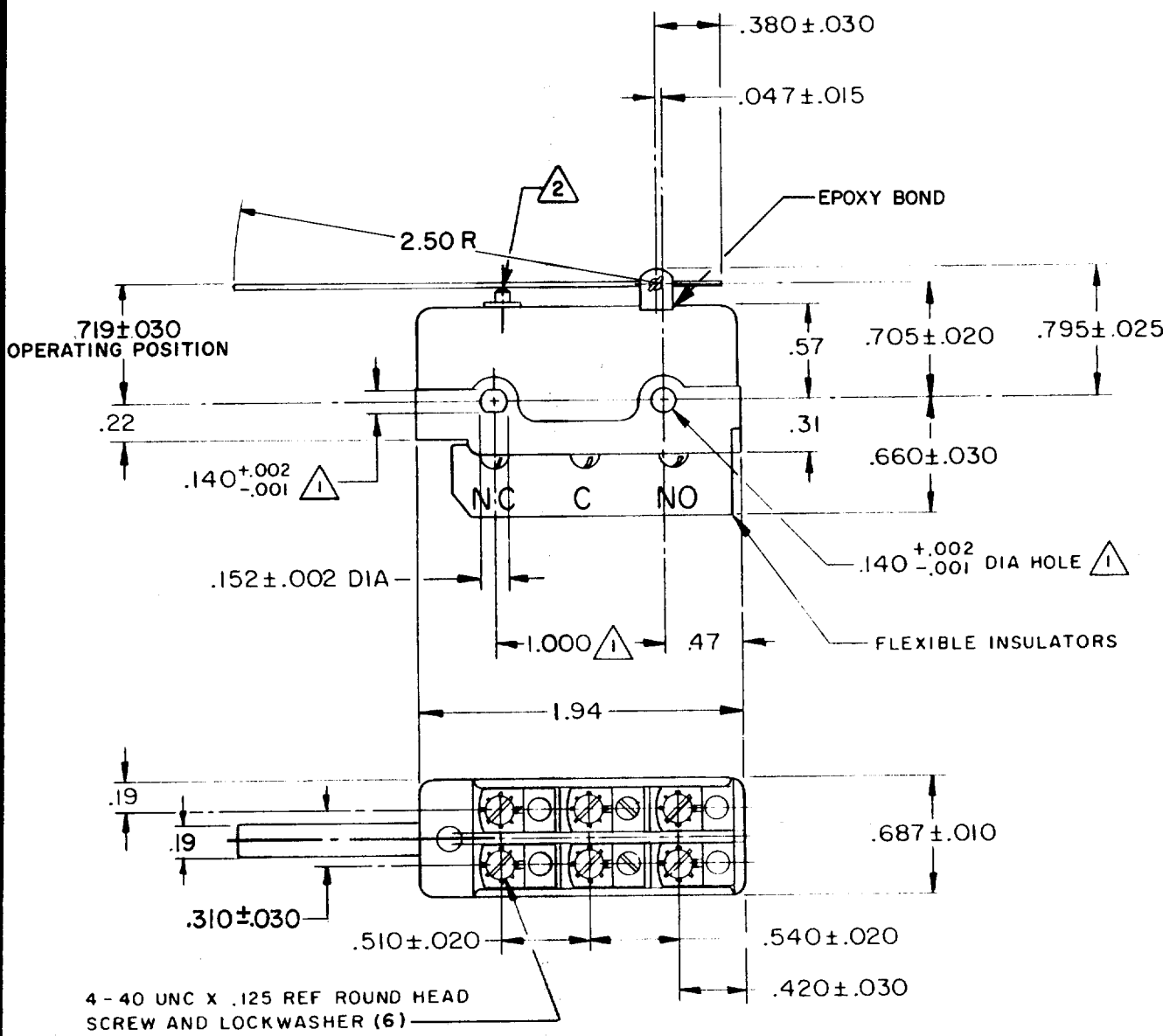
20 JUNE 63

DRAWN

L E B

20 JUNE 63

FO-80378



NOTE -  
 1 MOUNTING HOLES WILL ACCEPT PINS OR SCREWS OF .139 MAX DIA ON 1.000 ± .002 CENTERS  
 2 OVERTRAVEL TO BE MEASURED AT CENTER LINE OF PLUNGER

THIS DRAWING COVERS A PROPRIETARY ITEM AND IS THE PROPERTY OF MICRO SWITCH, A DIVISION OF MINNEAPOLIS-HONEYWELL REGULATOR CO. THIS DRAWING IS NOT TO BE COPIED OR USED WITHOUT THE APPROVAL OF MICRO SWITCH.

CHARACTERISTICS	ELECTRICAL DATA	SCALE FULL
OPERATING FORCE-----4-7 OZ	CONTACT ARRANGEMENT D P D T	DO NOT SCALE PRINT
RELEASE FORCE-----1/2 OZ MIN	UL LISTED-FILE E12252	UNLESS OTHERWISE NOTED
PRETRAVEL-----.270 MAX	CODE L59	DIMENSIONS ARE IN INCHES
DIFFERENTIAL TRAVEL-----.115-.190	10A-125 OR 250 VAC	<b>TOLERANCES ARE:</b>
OVERTRAVEL-----2 .010 MIN	0.3A-125 VDC; 0.15A-250 VDC	ONE PLACE (.0) ±.030
	SP	TWO PLACE (.00) ±.015
		THREE PLACE (.000) ±.005
		ANGLES ±
		WEIGHT .080 LB