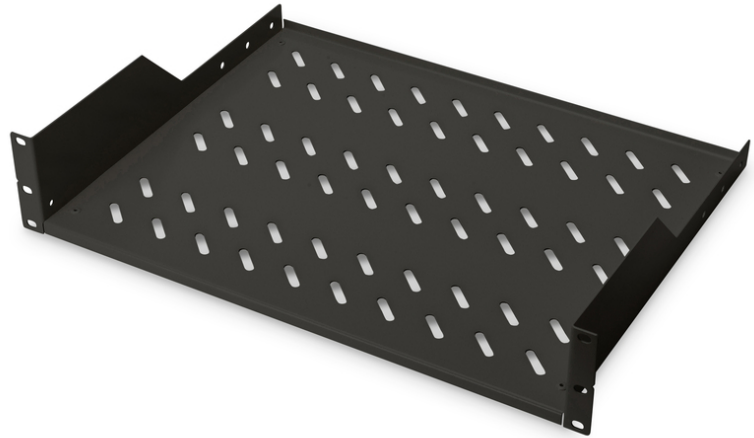


# DIGITUS Shelf for Fixed Installation in 483 mm (19") Cabinets

DN-19 TRAY-2-SW  
 EAN 4016032222613



**2U fixed shelf for racks from 450 mm depth 88x482x349 mm, up to 25 kg, black (RAL 9005)**

The shelves for fixed mounting can be installed easy on the two front 483 mm (19") profile rails of your 483 mm (19") network- or server cabinet. Due to their stable, perforated steel sheet with a high load capacity, they are the optimal surface for components which are not 483 mm (19") suitable.

- Fixed installation

- sturdy, perforated steel sheet
- incl. fixing material
- Color: black, RAL 9005
- Inch form factor (IEC 60297): 482.6 mm (19")
- Units: 2
- Load capacity: 25 kg
- Suitable cabinet depth:  $\geq 450$  mm
- Mounting type: Fixed mounting

Logistics						
	Number (pcs)	Weight (kg)	Depth (cm)	Width (cm)	Height (cm)	cm <sup>3</sup>
Packaging Unit Carton	7	14.70	59.50	50.00	51.50	153,212.00
Packaging Unit Inside	1	2.10	37.00	52.00	9.00	17,316.00
Packaging Unit Single	1	2.10	37.00	52.00	9.00	17,316.00
Net single without Packaging	1	1.66	37.00	52.00	9.00	17,316.00