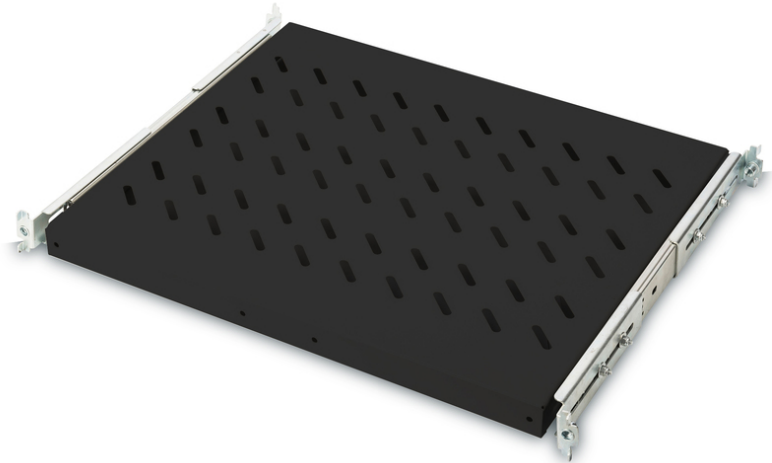


DIGITUS Extendible Shelf for 483 mm (19") Cabinets

DN-19 TRAY-2-600-SW
EAN 4016032149446



1U extendible shelf for 600 mm depth racks 40x485x368 mm, up to 25 kg, black (RAL 9005)

The extendible Shelves are easy to install at the four 483 mm (19") profile rails of your 483 mm (19") cabinets. Due to the sturdy, perforated sheet steel with a high load capacity, they are the optimal surface for your network components. An attached handle can be installed to facilitate the extension of the shelf. Available in standard color grey (RAL 7035) and black (RAL 9005).

- For fixing at the four 483 mm (19") mounting profile rails

- Extractable, with handle bar
- Sturdy, perforated sheet steel
- Delivery with complete set of needed fixing material
- Adjustable mounting brackets MIN.-MAX.: 300 - 530 mm
- Color: black, RAL 9005
- Inch form factor (IEC 60297): 482.6 mm (19")
- Units: 1
- Load capacity: 25 kg
- Suitable cabinet depth: 600 mm
- Mounting type: Extendible

Logistics						
	Number (pcs)	Weight (kg)	Depth (cm)	Width (cm)	Height (cm)	cm³
Packaging Unit Carton	11	31.10	30.00	50.00	77.00	115,500.00
Packaging Unit Inside	1	2.83	39.00	51.00	4.30	8,552.70
Packaging Unit Single	1	2.83	39.00	51.00	4.30	8,552.70
Net single without Packaging	1	2.74	39.00	51.00	4.30	8,552.70