

Euromas ABS / PC / F05

Enclosures, polycarbonate V0



M 215-V0

Order no.: 02215094

* = Available on request.

Characteristics

Colour of enclosure group

Light grey

Protection class

IP 66

Enclosure Material

ABS, PC (UV stabilised) and selected sizes in PC UL 94 V0 (additional UL 94 V0 versions on request), seal made of CR;

V215: Vestamid, CR seal; for details see Technical Information

Scope of delivery

Lid and base, lid screws made of V2A, self-tapping screws for mounting bosses

Note

V0 = version in UL 94 V0 enclosure material.

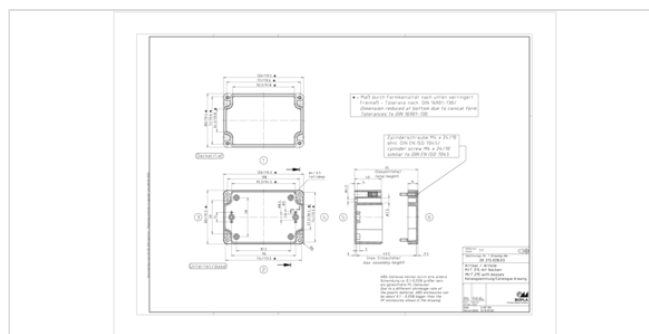
IP = Ingress protection acc. to DIN EN 60529

Dimensions

Dimensions

120 x 80 x 55 mm

Product drawing



Important!

To compensate for pressure when temperatures change and cause moisture in the enclosure, we recommend that you use a pressure compensation element.

» Additional information

20.02.2020

Technical documentation / Downloads

Technical drawings

3D product data in STEP format: Registration necessary
Product drawing in PDF format: 02215094 M-215-V0.pdf (91.0 KB)
Drawing for mechanical processing: 02215094 M-215-V0-G.dxf (324.8 KB)

Milling contours are shown here as a DXF file. (Sub D, USB, HDMI, cable glands, ...)

Works Test Certificates

670 WPZ-Euomas-PC DE.pdf (197.3 KB)
670 WPZ-Euomas-PC EN.pdf (191.1 KB)

Product information

Euomas ABS PC GB.pdf (337.6 KB)

Matching accessories



Mounting plates, laminated paper (Pertinax), galvanised steel for version 260

22000400 M

For EM/ET 215, M/T 215-216, M/T 226,
M/T 230



Knurled screws

22003100 RD

For M/T 210-215, M/T 217, M/T 220-227,
M/T 231



Rubber feet, plug-in

22003300 F

For M/T 208-260



Wall brackets on rear, screw-on, polycarbonate

22004900 WL

For M/T 210-243, M/T 246-253



DIN rails DIN EN 60715 TH 15, galvanised steel

22001900 TS 15

For M/T 215-217, M/T 226-230



DIN rails DIN EN 60715 TH 35, galvanised steel

22001910 TS 35

For M/T 215-217, M/T 226-230



Screws (SHR) and distance bolts (DIBLZ) for mounting bosses in plastic enclosures

59006101 SHR Z B4,5x7,8 SD = 4.5 / ND = 4.0 / KD = 7.5



Threaded inserts, brass, for mounting bosses in plastic enclosures

59002810 DODGE M3x6,5 ND = 4.0 x 6.5

59002820 DODGE M4x9,5 ND = 5.4 x 9.5