

# Alubos

## Enclosure profiles, closed



ABP 1600-0200

Order no.: 84160200

\* = Available on request.

### Characteristics

Colour of enclosure group

Black, similar to RAL 9005

Protection class

IP 65

Enclosure Material

Extruded profiles: Al Mg Si 0.5 powder-coated; diecast lid: GB Al Si 12, powder-coated; seal: TPE; for details see Technical Information

### Scope of delivery

Enclosure profile

### Note

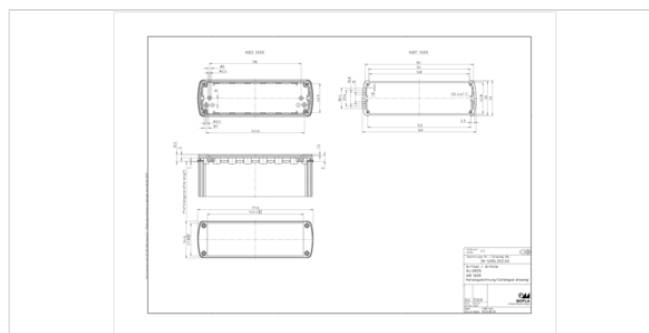
C = profile length, special lengths on request.

### Dimensions

Dimensions

169 x 52 x 200 mm

Product drawing



### Important!

To compensate for pressure when temperatures change and cause moisture in the enclosure, we recommend that you use a pressure compensation element.

» Additional information

## Technical documentation / Downloads

---

### Technical drawings

3D product data in STEP format: Registration necessary  
Product drawing in PDF format: 84160200 ABP-1600-0200.pdf (59.9 KB)  
Product drawing in DXF format: 84160200 ABP-1600-0200.dxf (716.5 KB)  
Drawing for mechanical processing: 84160200 ABP-1600-0200-G.dxf (316.0 KB)

Milling contours are shown here as a DXF file. (Sub D, USB, HDMI, cable glands, ...)

### Product information

Alubos GB.pdf (2.7 MB)

## Matching accessories

---



End cover

84161000 ABD 1600

For AB 1600



EMC seals

84201615 DI 1600-EMV

For AB 1600



Seals, ultramarine

84201614 DI 1600-5002

For AB 1600



Seals, fire red

84201616 DI 1600-3000

For AB 1600



Seals, rape yellow

84201612 DI 1600-1021

For AB 1600



Seals, patina green

84201613 DI 1600-6000

For AB 1600



Seals UL 94 V0

84201619\* DI 1600-V0

For AB 1600



Wall brackets, sheet steel

84008000 AB-WL 3

For AB 1600/1680/2070



Handle / Tip-up bow, hinged

84162000 AB 1600 HS

For AB 1600/1680



Rubber feet

84006700 AB - GF

Polyurethane, 65-75 Shore

Black