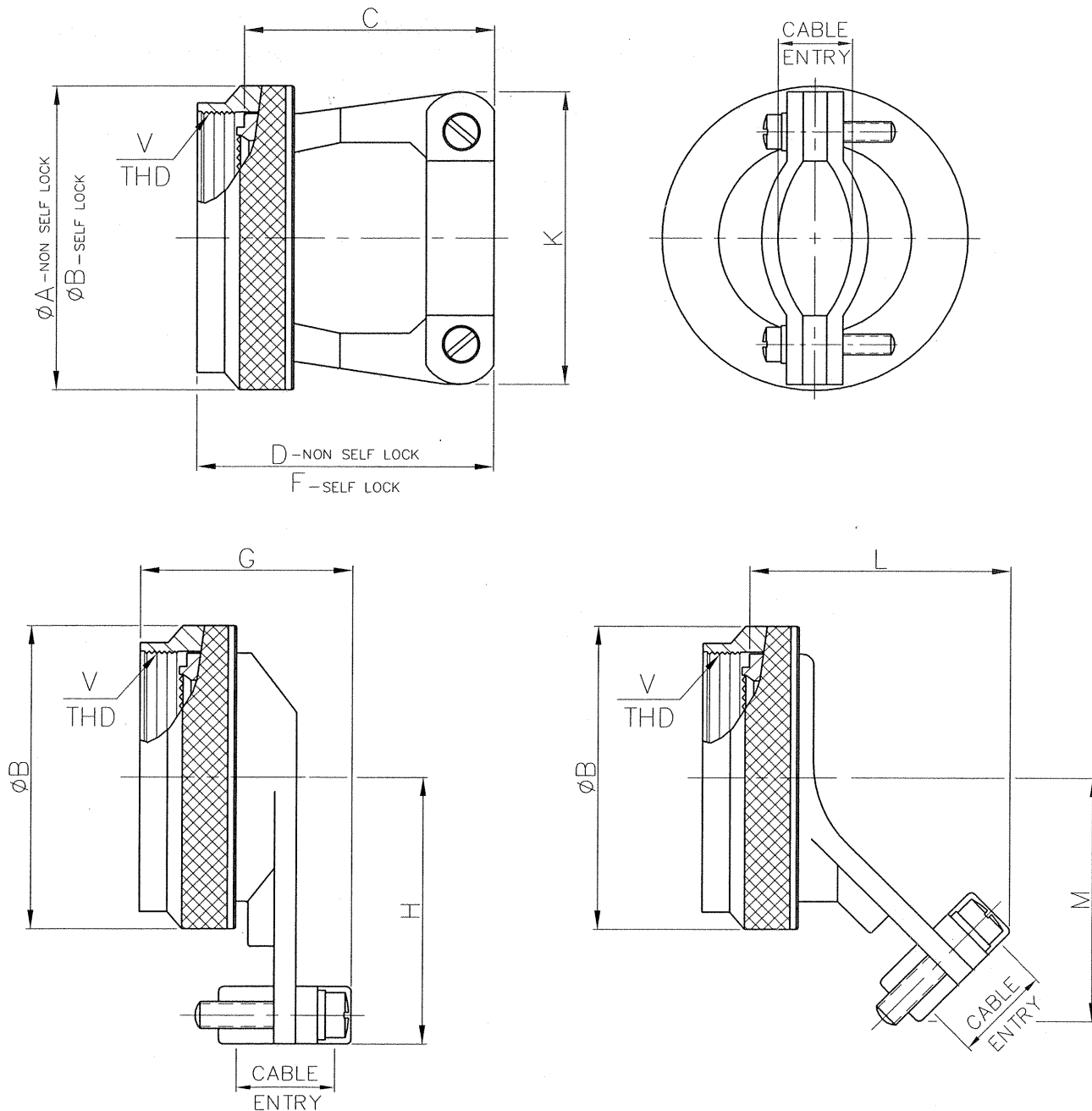


Issue No.	Eng. Ref. No.	REVISIONS	Date	App. By
1	--	ORIGINAL	11/04/06	
2				

STRAIN RELIEF BACKSHELL :-



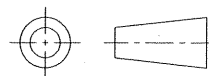
Amphenol

AIPL

TITLE

**STRAIN RELIEF
BACKSHELL**

(FOR CONNECTOR MIL-DTL-38999 Se -III & IV)



All Dimensions are in
MM/INCHES

	Name	Date
Drawn by	RPS	09/04/06
Checked by		10/14/06
App. by		11/04/06

Dwg. Size
A4

Dwg.No.

PSTDBS149

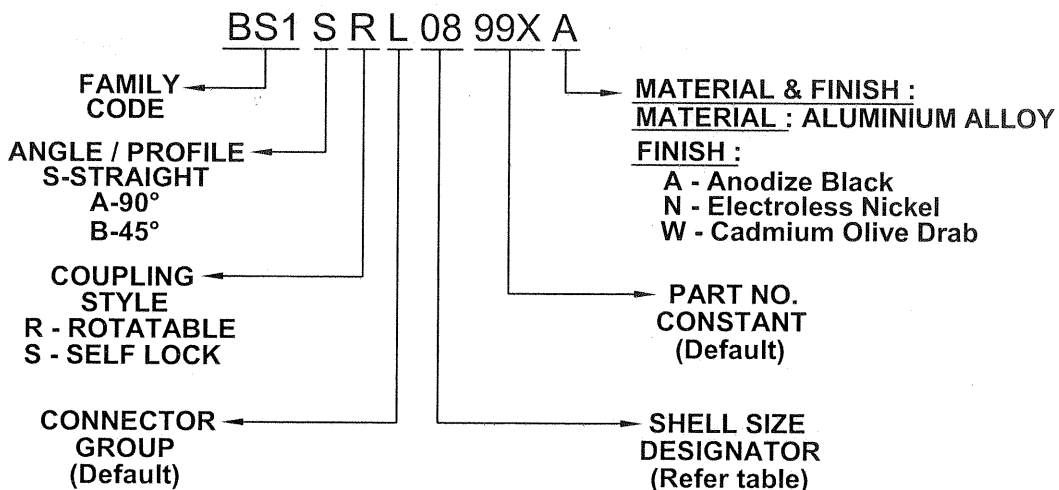
Doc. No.: QF-DEV-76
REV. NO. : 02

Sheet 1 OF 3

STANDARD

Issue No.	Eng. Ref. No.	REVISIONS	Date	App. By
1	--	ORIGINAL	11/04/06	
2				

PART NUMBERING SYSTEM :-



DIMENSIONS :-

SHELL SIZE DESIGNATOR	CONNECTOR SHELL SIZE	V THREAD CLASS 2B	øA MAX.		øB MAX.		C MAX.		D MAX.	
			INCH	MM	INCH	MM	INCH	MM	INCH	MM
08	9/A	M 12 X 1-6H	0.75	19.05	0.86	21.79	0.91	23.11	1.10	27.94
10	11/B	M 15 X 1-6H	0.85	21.59	0.98	24.99	0.91	23.11	1.10	27.94
12	13/C	M 18 X 1-6H	1.00	25.40	1.16	29.39	1.01	25.65	1.20	30.48
14	15/D	M 22 X 1-6H	1.10	27.94	1.28	32.49	1.06	26.92	1.25	31.75
16	17/E	M 25 X 1-6H	1.25	31.75	1.41	35.71	1.16	29.46	1.35	34.29
18	19/F	M 28 X 1-6H	1.40	35.56	1.52	38.51	1.41	35.81	1.60	40.64
20	21/G	M 31 X 1-6H	1.50	38.10	1.64	41.71	1.51	38.35	1.70	43.18
22	23/H	M 34 X 1-6H	1.65	41.91	1.77	44.91	1.66	42.16	1.85	46.99
24	25/J	M 37 X 1-6H	1.75	44.45	1.89	47.98	1.76	44.70	1.95	49.53

Amphenol AIPL			TITLE STRAIN RELIEF BACKSHELL (FOR CONNECTOR MIL-DTL-38999 Se -III & IV)				
			Dwg.No. PSTDBS149			All Dimensions are in MM/INCHES	
Drawn by	Name	Date	Dwg. Size A4	Doc. No.: QF-DEV-76 REV. NO. : 02		Sheet 2 OF 3	
Checked by		10/04/06					
App.by		11/04/06					
						STANDARD	

Issue No.	Eng. Ref. No.	REVISIONS	Date	App. By
1	--	ORIGINAL	11/04/06	
2				

DIMENSIONS :-

SHELL SIZE DESIGNATOR	CONNECTOR SHELL SIZE	F MAX.		K MAX.		G MAX.		H MAX.	
		INCH	MM	INCH	MM	INCH	MM	INCH	MM
08	9/A	1.21	30.73	0.85	21.59	1.31	33.27	1.00	25.40
10	11/B	1.21	30.73	0.90	22.86	1.31	33.27	1.10	27.94
12	13/C	1.31	33.27	1.10	27.94	1.51	38.35	1.10	27.94
14	15/D	1.35	34.29	1.15	29.21	1.55	39.37	1.25	31.75
16	17/E	1.45	36.83	1.30	33.02	1.71	43.43	1.30	33.02
18	19/F	1.71	43.43	1.50	38.10	1.81	45.97	1.35	34.29
20	21/G	1.81	45.97	1.60	40.64	1.95	49.53	1.60	40.64
22	23/H	1.95	49.53	1.70	43.18	2.10	53.34	1.75	44.45
24	25/J	2.05	52.07	1.80	45.72	2.21	56.13	1.85	46.99

SHELL SIZE DESIGNATOR	CONNECTOR SHELL SIZE	L MAX.		M MAX.		CABLE ENTRY			
		INCH	MM	INCH	MM	MIN.		MAX.	
						INCH	MM	INCH	MM
08	9/A	1.320	33.53	0.77	19.61	0.10	2.49	0.23	5.94
10	11/B	1.364	34.65	0.80	20.40	0.15	3.89	0.23	5.94
12	13/C	1.438	36.53	0.87	22.00	0.19	4.83	0.33	8.33
14	15/D	1.480	37.59	0.93	23.57	0.26	6.60	0.46	11.61
16	17/E	1.586	40.28	0.99	25.17	0.28	7.19	0.61	15.60
18	19/F	1.704	43.28	1.11	28.19	0.33	8.26	0.63	16.10
20	21/G	1.748	44.40	1.17	29.77	0.34	8.71	0.70	17.73
22	23/H	1.792	45.52	1.24	31.37	0.38	9.68	0.82	20.90
24	25/J	1.836	46.63	1.30	32.94	0.42	10.62	0.85	21.67

MATERIAL :-

- ◇ Aluminium alloy as per ASTM B211 / B85
- ◇ Corrosion resistant steel as per AMS-QQ-S-763

Amphenol AIPL			TITLE STRAIN RELIEF BACKSHELL (FOR CONNECTOR MIL-DTL-38999 Se -III & IV)				
Drawn by	Name	Date	Dwg. Size A4	Dwg.No. PSTDBS149			STANDARD
Checked by		10/04/06					
App.by		11/04/06					
			Doc. No.: QF-DEV-76 REV. NO. : 02		Sheet 3 OF 3		