

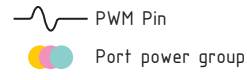
METRO

adafruit

PINOUT

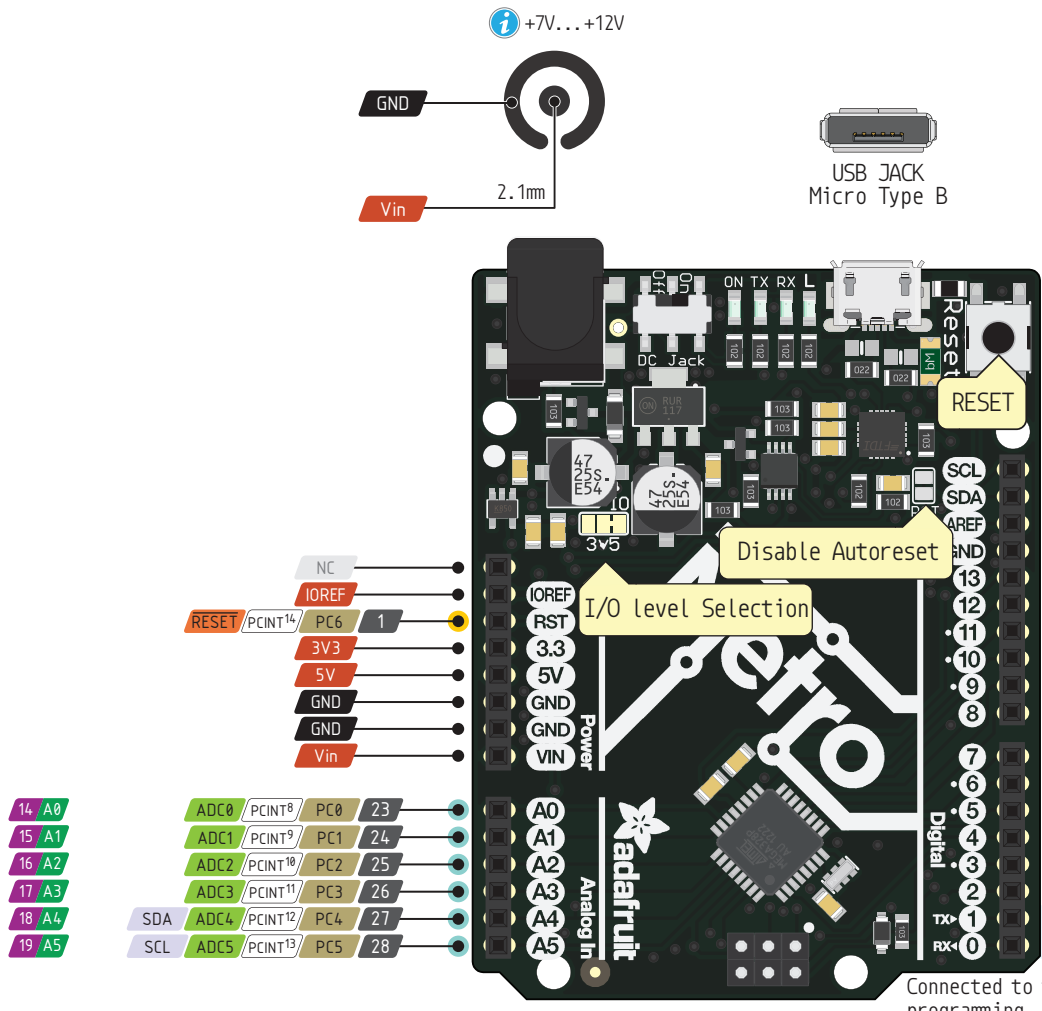
- Vin** Input voltage to the board when it's using an external power source. Not USB bus
- IOREF** Logic reference voltage for shields that use it. Is connected to the 5V bus
- 3V3** The **Absolute** output from the 3.3V regulator is MAX 150MA

- Power
- GND
- Physical PIN
- Port PIN
- Analog PIN
- Serial PIN
- PIN Function
- Interrupt PIN
- Control PIN
- IDE



- Absolute** MAX per pin 40mA, 20mA recommended
- Absolute** MAX 200mA for the entire package
- The total current of each port power group **should not exceed** 100mA

When I/O Level is 3.3V
Absolute MAX per pin 20mA, 10mA recommended



28	PC5 / PCINT13	ADC5	SCL	19	A5
27	PC4 / PCINT12	ADC4	SDA	18	A4
21	AREF				
	GND				
19	PB5 / PCINT5		SCK	13	
18	PB4 / PCINT4		MISO	12	
17	PB3 / PCINT3	OC2A	MOSI	11	
16	PB2 / PCINT2	OC1B	SS	10	
15	PB1 / PCINT1	OC1A		9	
14	PB0 / PCINT0	CLKO	ICP1	8	
13	PD7 / PCINT23	AIN1		7	
12	PD6 / PCINT22	AIN0	OC0A	6	
11	PD5 / PCINT21	T1	OC0B	5	
6	PD4 / PCINT20	XCK	T0	4	
5	PD3 / PCINT19	INT1	OC2B	3	
4	PD2 / PCINT18	INT0		2	
3	PD1 / PCINT17		TXD	1	
2	PD0 / PCINT16		RXD	0	

Connected to the ATmega and used for USB programming and communicating with it

