



DEUTSCH | DEUTSCH ABC

TE Internal #: ABC03N-20P

DEUTSCH ABC, Standard Rectangular Connectors, Receptacle, Mating Alignment, Keyed Mating Alignment Type, Wire-to-Wire, Normal, 5 Position, 2 Row

[View on TE.com >](#)

Connectors > Rectangular Connectors > Standard Rectangular Connectors



Connector & Housing Type: **Receptacle**

Mating Alignment: **With**

Mating Alignment Type: **Keyed**

Mating Retention Type: **Latch**

Connector System: **Wire-to-Wire**

Features

Product Type Features

Connector & Housing Type	Receptacle
Connector System	Wire-to-Wire
Insertion Force Type	Normal
Sealable	Yes
Connector & Contact Terminates To	Wire & Cable

Configuration Features

Number of Positions	5
Number of Rows	2

Contact Features

Contact Type	Pin
Contact Size	20
Contact Style	Crimp
Contact Retention Within Housing	With
Contact Current Rating (Max)	7.5 A

Mechanical Attachment

Contact Retention Type Within Housing	Crimp Snap-In
Mating Alignment	With



Mating Alignment Type	Keyed
Mating Retention Type	Latch
Connector Mounting Type	Fixing Screw

Housing Features

Housing Material	Composite
------------------	-----------

Dimensions

Wire Size	24 – 20 AWG
-----------	-------------

Usage Conditions

Operating Temperature Range	-65 – 175 °C[-85 – 347 °F]
-----------------------------	----------------------------

Operation/Application

Circuit Application	Power & Signal
---------------------	----------------

Product Compliance

[For compliance documentation, visit the product page on TE.com>](#)

EU RoHS Directive 2011/65/EU	Compliant with Exemptions
EU ELV Directive 2000/53/EC	Compliant with Exemptions
China RoHS 2 Directive MIIT Order No 32, 2016	Restricted Materials Above Threshold
EU REACH Regulation (EC) No. 1907/2006	Current ECHA Candidate List: JAN 2022 (223) Candidate List Declared Against: JAN 2021 (211) SVHC > Threshold: Pb (1.2% in Contact Lead-Copper Alloy) Decamethylcyclopentasiloxane (D5) (5% in Insert Assembly) Article Safe Usage Statements: Do not eat, drink or smoke when using this product. Wash thoroughly after handling. Recycle if possible and dispose of the article by following all applicable governmental regulations relevant to your geographic location.
Halogen Content	Not Yet Reviewed for halogen content
Solder Process Capability	Not reviewed for solder process capability

Product Compliance Disclaimer

This information is provided based on reasonable inquiry of our suppliers and represents our current actual knowledge based on the information they provided. This information is subject to change. The part numbers that TE has identified as EU RoHS compliant have a maximum concentration of 0.1% by weight in homogenous materials for lead, hexavalent chromium, mercury, PBB, PBDE, DBP, BBP, DEHP, DIBP, and 0.01% for cadmium, or qualify for an exemption to these limits as defined in the Annexes of Directive 2011/65/EU (RoHS2). Finished electrical and electronic equipment products will be CE marked as required by Directive 2011/65/EU. Components may not be CE marked. Additionally, the part numbers that TE has identified as EU ELV compliant have a maximum concentration of 0.1% by weight in homogenous materials for lead, hexavalent chromium, and mercury, and 0.01% for cadmium, or qualify for an exemption to these limits as defined in the Annexes of Directive 2000/53/EC (ELV). Regarding the REACH Regulation, the information TE provides on SVHC in articles for this part number is based on the latest European Chemicals Agency (ECHA) 'Guidance on

requirements for substances in articles' posted at this URL: <https://echa.europa.eu/guidance-documents/guidance-on-reach>

Also in the Series | DEUTSCH ABC



Standard Rectangular Connectors(74)

Customers Also Bought



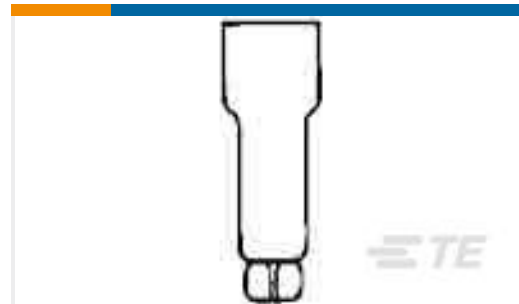
TE Part #36151
PIDG R 22-16 COMM 22-18 MIL 6



TE Part #59250
T-HEAD PIDG 26-14 ASSY



TE Part #468963-000
382A012-4/86-0



TE Part #34304
SPLICE,CE 22-14



TE Part #YDTS20F11-35SNV001
RECP ASSY



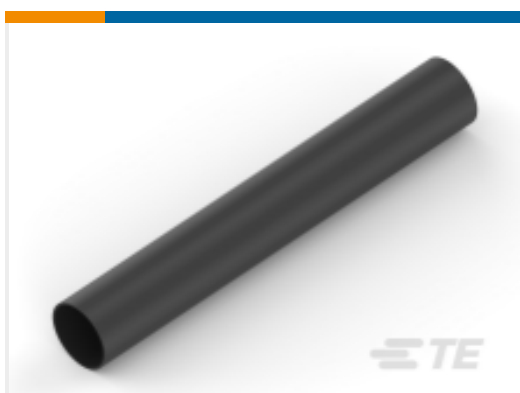
TE Part #YDTS26W15-19SNV001
PLUG ASSY



TE Part #ABC03N-20P-4048
IN-LINE RECP



TE Part #683123-000
S03-08-R-100HN



TE Part #NB13524001
RNF-100-3/8-BK-SP



TE Part #3-1617004-3
B07D912BC1-0359 = RELAY.

Documents

Product Drawings

IN-LINE RECP

English



CAD Files

3D PDF

3D

Customer View Model

[ENG_CVM_CVM_ABC03N-20P_99_c-abc03n-20p-99.2d_dxf.zip](#)

English

Customer View Model

[ENG_CVM_CVM_ABC03N-20P_99_c-abc03n-20p-99.3d_igs.zip](#)

English

Customer View Model

[ENG_CVM_CVM_ABC03N-20P_99_c-abc03n-20p-99.3d_stp.zip](#)

English

By downloading the CAD file I accept and agree to the [Terms and Conditions](#) of use.

Datasheets & Catalog Pages

DEUTSCH ABC In-Line Connectors

English