

# 86561-4 ✓ ACTIVE

TE Internal #: 86561-4

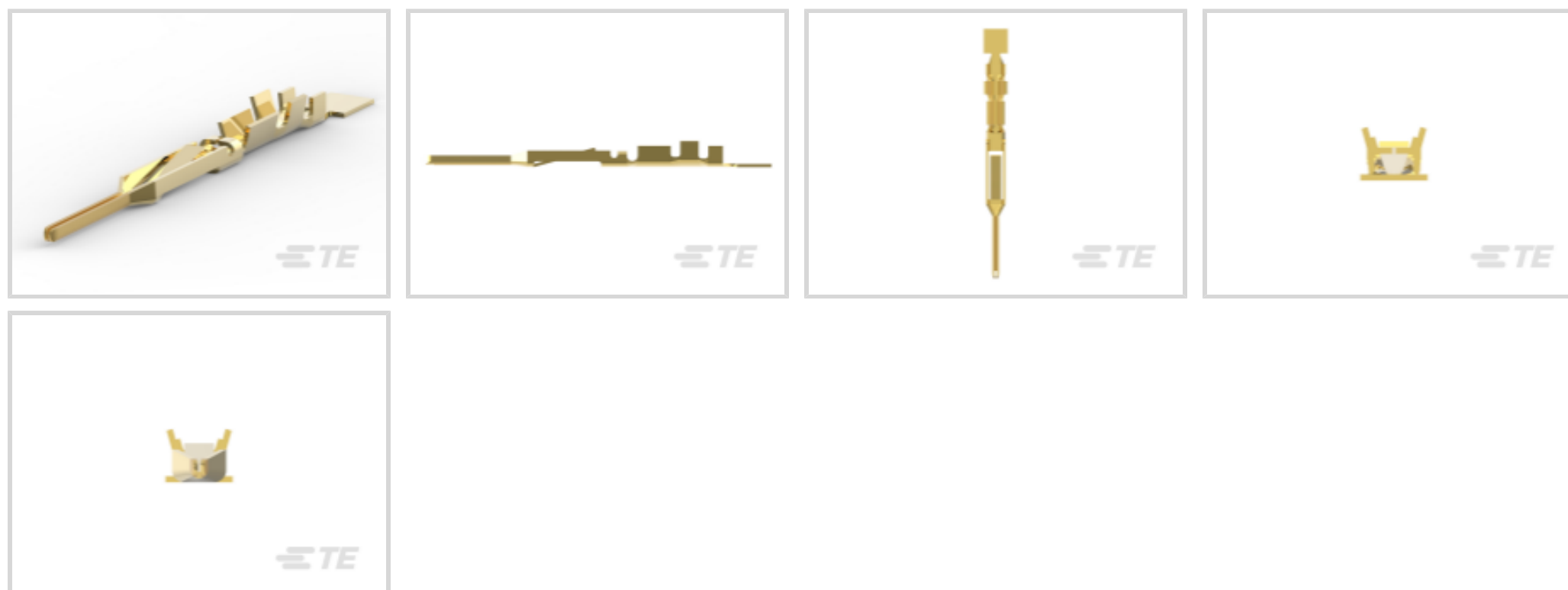
FFC Contacts, Cable-to-Cable, 2.54 mm [.1 in] Centerline, Discrete Wire, Pin, Gold, Loose Piece, Insulation Displacement (IDC), 26 – 22 AWG Wire Size

[View on TE.com >](#)



Connectors > PCB Connectors > Wire-to-Board Connectors > FFC, FPC & Ribbon Connectors > FFC Contacts >

2.54mm FFC Connectors Pin Contacts



Connector System: **Cable-to-Cable**

Centerline (Pitch): **2.54 mm [.1 in]**

Compatible With Wire & Cable Type: **Discrete Wire**

Contact Type: **Pin**

Contact Mating Area Plating Material: **Gold**

[All 2.54mm FFC Connectors Pin Contacts \(34\)](#)

## Features

### Product Type Features

Connector System	Cable-to-Cable
Sealable	No
Connector & Contact Terminates To	Wire & Cable

### Configuration Features

Compatible With Wire & Cable Type	Discrete Wire
-----------------------------------	---------------

### Contact Features

	30 $\mu$ m
Contact Underplating Material	Nickel
PCB Contact Termination Area Plating Material	Gold Flash
Contact Base Material	Phosphor Bronze
Contact Type	Pin
Contact Mating Area Plating Material	Gold



Contact Current Rating (Max)	2 A
------------------------------	-----

### Termination Features

Termination Method to Wire & Cable	Insulation Displacement (IDC)
------------------------------------	-------------------------------

### Mechanical Attachment

Connector Mounting Type	Cable Mount (Free-Hanging)
-------------------------	----------------------------

### Housing Features

Centerline (Pitch)	2.54 mm [.1 in]
--------------------	-----------------

### Dimensions

Accepts Conductor Width	1.27 mm, 2.33 mm
-------------------------	------------------

Wire Size	.12 – .4 mm <sup>2</sup>
-----------	--------------------------

Accepts Wire Insulation Diameter Range	1.02 – 1.42 mm [.04 – .056 in]
--	--------------------------------

### Usage Conditions

Operating Temperature Range	-65 – 105 °C [-85 – 221 °F]
-----------------------------	-----------------------------

### Operation/Application

Circuit Application	Signal
---------------------	--------

### Packaging Features

Packaging Method	Loose Piece
------------------	-------------

### Other

Comment	Use Extraction Tool No. 91092-1 for end locking slot and Extraction Tool No. 91093-1 for side locking lance slot.
---------	---

### Product Compliance

[For compliance documentation, visit the product page on TE.com>](#)

EU RoHS Directive 2011/65/EU	Compliant
------------------------------	-----------

EU ELV Directive 2000/53/EC	Compliant
-----------------------------	-----------

China RoHS 2 Directive MIIT Order No 32, 2016	No Restricted Materials Above Threshold
---	---

EU REACH Regulation (EC) No. 1907/2006	Current ECHA Candidate List: JAN 2022 (223) Candidate List Declared Against: JAN 2022 (223) Does not contain REACH SVHC
--	---

Halogen Content	Low Halogen - Br, Cl, F, I < 900 ppm per homogenous material. Also BFR/CFR/PVC Free
-----------------	---

## Solder Process Capability

Reflow solder capable to 260°C

## Product Compliance Disclaimer

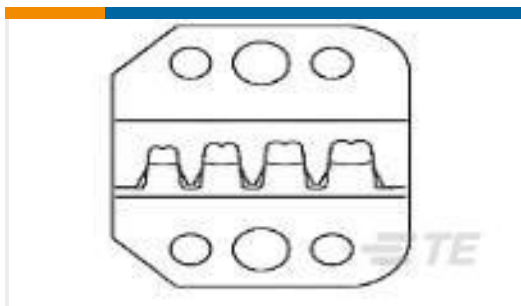
This information is provided based on reasonable inquiry of our suppliers and represents our current actual knowledge based on the information they provided. This information is subject to change. The part numbers that TE has identified as EU RoHS compliant have a maximum concentration of 0.1% by weight in homogenous materials for lead, hexavalent chromium, mercury, PBB, PBDE, DBP, BBP, DEHP, DIBP, and 0.01% for cadmium, or qualify for an exemption to these limits as defined in the Annexes of Directive 2011/65/EU (RoHS2). Finished electrical and electronic equipment products will be CE marked as required by Directive 2011/65/EU. Components may not be CE marked. Additionally, the part numbers that TE has identified as EU ELV compliant have a maximum concentration of 0.1% by weight in homogenous materials for lead, hexavalent chromium, and mercury, and 0.01% for cadmium, or qualify for an exemption to these limits as defined in the Annexes of Directive 2000/53/EC (ELV). Regarding the REACH Regulation, the information TE provides on SVHC in articles for this part number is based on the latest European Chemicals Agency (ECHA) 'Guidance on requirements for substances in articles' posted at this URL: <https://echa.europa.eu/guidance-documents/guidance-on-reach>

## Compatible Parts

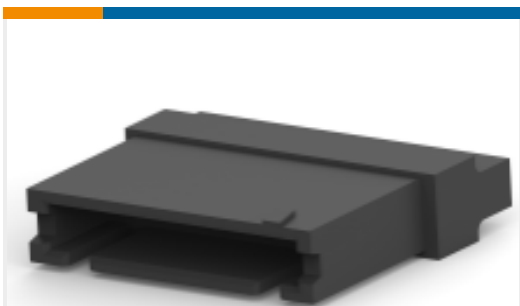
 <p>TE Part # CAT-F439-R2435254 2.54mm FFC Connectors Receptacle Housing</p>	 <p>TE Part # 58535-1 PRO-CRIMPER ASSY MODU MODII</p>	 <p>TE Part # 485893-5 007 HOUSING FFC PIN 100CL SR</p>	 <p>TE Part # 485893-8 010 HOUSING FFC PIN 100CL SR</p>
 <p>TE Part # 485893-9 011 HOUSING FFC PIN 100CL SR</p>	 <p>TE Part # 1-485893-4 016 HOUSING FFC PIN 100CL SR</p>	 <p>TE Part # 3-88189-2 006 HOUSING FFC PIN DR 100CL</p>	 <p>TE Part # 1-485893-0 012 HOUSING FFC PIN 100CL SR</p>
 <p>TE Part # 1-88189-0 026 HOUSING FFC PIN DR 100CL</p>	 <p>TE Part # 485897-2 004 HOUSING FFC PIN 100CL SR</p>	 <p>TE Part # 1-485893-6 018 HOUSING FFC PIN 100CL SR</p>	 <p>TE Part # 1-485893-8 020 HOUSING FFC PIN 100CL SR</p>



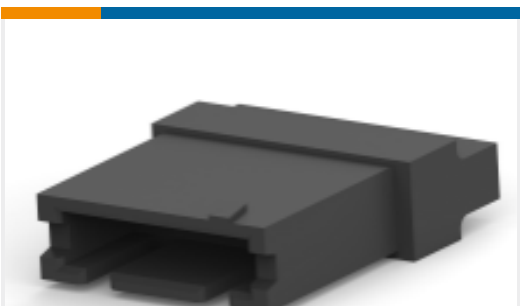
TE Part # 3-88190-0  
010 HOUSING FFC PIN DR 100CL



TE Part # 58535-2  
PRO-CRIMPER ASSY MODU



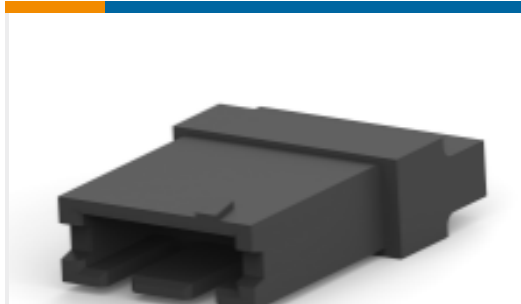
TE Part # 485893-6  
008 HOUSING FFC PIN 100CL SR



TE Part # 485893-3  
005 HOUSING FFC PIN 100CL SR



TE Part # 485893-4  
006 HOUSING FFC PIN 100CL SR



TE Part # 485893-2  
004 HOUSING FFC PIN 100CL SR

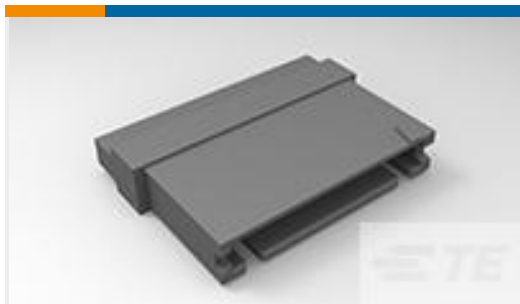


TE Part # 1-485893-1  
013 HOUSING FFC PIN 100CL SR



TE Part # 1-485893-3  
015 HOUSING FFC PIN 100CL SR

### Customers Also Bought



TE Part #494032-2  
003 HOUSING FFC PIN 100CL SR



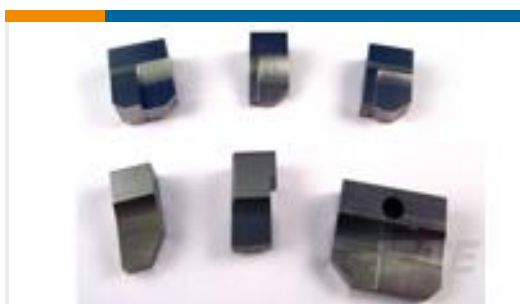
TE Part #86571-2  
RND WIRE RCPT L.P.



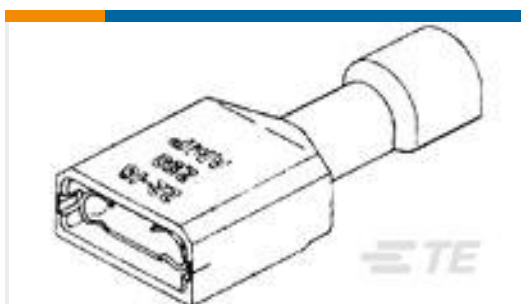
TE Part #2299282-1  
POD-LOK 250 STR. AWG 22-18 PTPBR GF



TE Part #2-456134-5  
CRIMPER, INSULATION "F"(.200")



TE Part #238005-1  
ANVIL



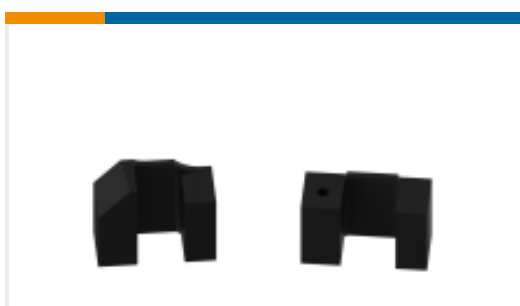
TE Part #2-520263-2  
ULTRA-FAST 250 ASY REC 22-18 TPBR



TE Part #BSA108F26550236000  
923 PLUG, SHORT



TE Part #1-5225398-5  
DUAL CRIMP BNC BLKHD JACK



TE Part #690462-1  
SHEAR HOLDER-REAR

### Documents



### Product Drawings

#### [ROUND WIRE PIN L.P.](#)

English

#### [ROUND WIRE PIN L.P.](#)

English

---

### CAD Files

#### Customer View Model

##### [ENG\\_CVM\\_CVM\\_86561-4\\_D.2d\\_dxf.zip](#)

English

#### 3D PDF

3D

#### Customer View Model

##### [ENG\\_CVM\\_CVM\\_86561-4\\_D.3d\\_igs.zip](#)

English

#### Customer View Model

##### [ENG\\_CVM\\_CVM\\_86561-4\\_D.3d\\_stp.zip](#)

English

By downloading the CAD file I accept and agree to the [Terms and Conditions](#) of use.

---

### Product Specifications

#### [Application Specification](#)

English

#### [Application Specification](#)

English

---

### Instruction Sheets

#### [Instruction Sheet \(U.S.\)](#)

English

#### [Instruction Sheet \(U.S.\)](#)

English

#### [Extraction Tool for Flexible Flat Cable \(FFC\)](#)

English