

786585-2 ✓ ACTIVE

AMPLIMITE | AMPLIMITE 0.50 Series

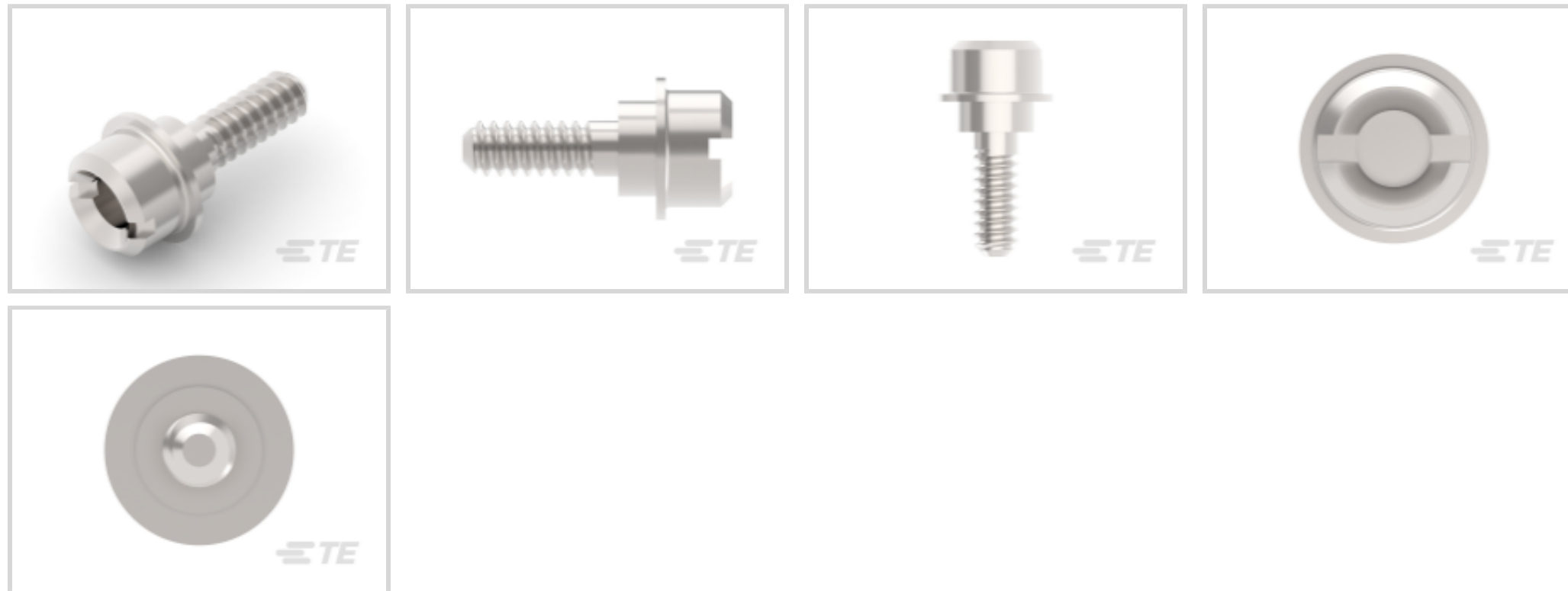
TE Internal #: 786585-2

D-Sub Locking & Mounting, Female Screwlocks, Screw Length 9.02 mm [.355 in], AMPLIMITE 0.50 Series

[View on TE.com >](#)



Connectors > D-Shaped Connectors > D-Sub Accessories > Locking & Mounting



D-Shaped Connector Accessories: **Female Screwlocks**

Screw Length: **9.02 mm [.355 in]**

Features

Product Type Features

Product Type	Accessory
D-Shaped Connector Accessories	Female Screwlocks

Mechanical Attachment

Screwlock Style	Screwlock Only
Screw & Hole Thread Size	2-56 UNC
Screw Length	9.02 mm [.355 in]

Dimensions

Thread Length	5.21 mm [.205 in]
---------------	-------------------

Packaging Features

Packaging Quantity	2
Packaging Method	Individual

Product Compliance

[For compliance documentation, visit the product page on TE.com>](#)

EU RoHS Directive 2011/65/EU	Compliant
EU ELV Directive 2000/53/EC	Compliant





China RoHS 2 Directive MIIT Order No 32, 2016	No Restricted Materials Above Threshold
EU REACH Regulation (EC) No. 1907/2006	Current ECHA Candidate List: JAN 2022 (223) Candidate List Declared Against: JAN 2022 (223) Does not contain REACH SVHC
Halogen Content	Low Halogen - Br, Cl, F, I < 900 ppm per homogenous material. Also BFR/CFR/PVC Free
Solder Process Capability	Not applicable for solder process capability

Product Compliance Disclaimer

This information is provided based on reasonable inquiry of our suppliers and represents our current actual knowledge based on the information they provided. This information is subject to change. The part numbers that TE has identified as EU RoHS compliant have a maximum concentration of 0.1% by weight in homogenous materials for lead, hexavalent chromium, mercury, PBB, PBDE, DBP, BBP, DEHP, DIBP, and 0.01% for cadmium, or qualify for an exemption to these limits as defined in the Annexes of Directive 2011/65/EU (RoHS2). Finished electrical and electronic equipment products will be CE marked as required by Directive 2011/65/EU. Components may not be CE marked. Additionally, the part numbers that TE has identified as EU ELV compliant have a maximum concentration of 0.1% by weight in homogenous materials for lead, hexavalent chromium, and mercury, and 0.01% for cadmium, or qualify for an exemption to these limits as defined in the Annexes of Directive 2000/53/EC (ELV). Regarding the REACH Regulation, the information TE provides on SVHC in articles for this part number is based on the latest European Chemicals Agency (ECHA) 'Guidance on requirements for substances in articles' posted at this URL: <https://echa.europa.eu/guidance-documents/guidance-on-reach>

Compatible Parts

 <p>TE Part # CAT-020-ADRV127 AMPLIMITE D-Sub Receptacle Assembly: Vertical, 1.27mm</p>	 <p>TE Part # CAT-020-DRAVAP127 D-Sub Receptacle Assembly: Vertical, Action Pin, 1.27mm</p>	 <p>TE Part # CAT-018-DRARA127 D-Sub Receptacle Assembly: Right Angle, 1.27mm</p>	 <p>TE Part # CAT-AM7-436507 IDC D-Sub: Receptacle Assembly, Panel Mount, Signal, 1.27 mm</p>
 <p>TE Part # 750831-1 .050SR FEM SCRLCK KIT, SLIM LN</p>	 <p>TE Part # 5-749878-7 68 50SR PNL MNT PLUG ASSY, ROHS</p>	 <p>TE Part # CAT-AM7-4365072 IDC D-Sub: Receptacle Kit, Panel Mount, Signal, 1.27 mm</p>	

Also in the Series | AMPLIMITE 0.50 Series



D-Sub Backshells & Clamps(31)



D-Sub Covers(20)



D-Sub Locking & Mounting(8)



IDC D-Sub Connectors(77)



Insertion & Extraction Tools(1)



PCB D-Sub Connectors(195)

Customers Also Bought



TE Part #5787394-7
D-Sub Receptacle Assembly: Right
Angle, 1.27mm



TE Part #1-1761987-8
ReceptacleConnAssm38PosTape/Re



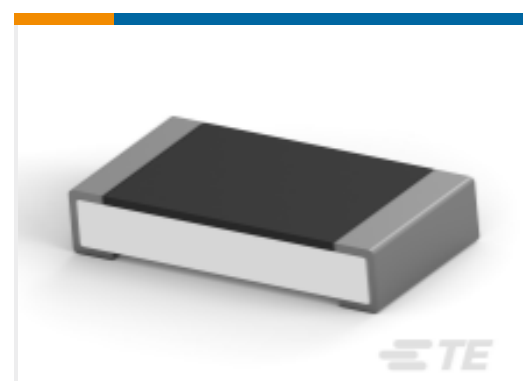
TE Part #1-148059-5
096 EURO TYP C RECP 17MM ASSY



TE Part #3-2176389-6
RQ 1206 249R 0.1% 10PPM 5K RL



TE Part #1-1761685-5
IDC LOW PRO HDR 50P VERT SHT LAT



TE Part #3-2176388-0
RQ 1206 20R 0.1% 10PPM 5K RL



TE Part #1-2120871-1
VARIANT 14;JACK METAL,RJ45,
CAT6A

Documents

Product Drawings

[50SR SCREWLOCK KIT,FEMALE](#)

English

CAD Files

[Customer View Model](#)

[ENG_CVM_CVM_786585-2_B.2d_dxf.zip](#)

English

[3D PDF](#)



3D

Customer View Model

[ENG_CVM_CVM_786585-2_B.3d_igs.zip](#)

English

Customer View Model

[ENG_CVM_CVM_786585-2_B.3d_stp.zip](#)

English

By downloading the CAD file I accept and agree to the [Terms and Conditions](#) of use.

Datasheets & Catalog Pages

[AMPLIMITE Subminiature D Connectors - .050 Series Connector](#)

English

[AMPLIMITE .050 Series D-sub Connectors QRG](#)

English

Product Specifications

[Application Specification](#)

English

Product Environmental Compliance

[MD_786585-2_04222014213_dmtec](#)

English

[MD_786585-2_04222014213_dmtec](#)

English

Instruction Sheets

[Instruction Sheet \(U.S.\)](#)

English

[Instruction Sheet \(U.S.\)](#)

English

[Instruction Sheet \(U.S.\)](#)

English

[Instruction Sheet \(U.S.\)](#)

English