



DESIGN KIT

WE-MAPI – Metal Alloy Power Inductor



SIZE:

3010 / 3012 / 3015 / 3020

TECHNICAL DATA:

L : 0.33 – 47.0 μH

I_R : 0.39 – 5.5 A

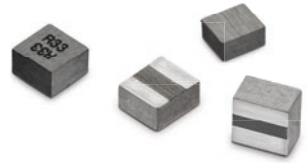
I_{sat} : 1.18 – 11.1 A

$R_{\text{DC typ}}$: 14.0 – 2090 m Ω

Order Code 744 383 3
Version 2.0

DESIGN KIT

WE-MAPI – Metal Alloy Power Inductor



3010	744 383 330 22	744 383 330 33	744 383 330 47	3012	744 383 340 033	744 383 340 047	744 383 340 056
	L: 2.2 μ H	L: 3.3 μ H	L: 4.7 μ H		L: 0.33 μ H	L: 0.47 μ H	L: 0.56 μ H
	I_{IC} : 1.4 A	I_{IC} : 1.1 A	I_{IC} : 0.9 A		I_{IC} : 4.8 A	I_{IC} : 4.0 A	I_{IC} : 3.6 A
	I_{SAT} : 3.9 A	I_{SAT} : 2.95 A	I_{SAT} : 2.4 A		I_{SAT} : 11.1 A	I_{SAT} : 9.4 A	I_{SAT} : 8.5 A
	$R_{DC\ typ}$: 150 m Ω	$R_{DC\ typ}$: 232 m Ω	$R_{DC\ typ}$: 356 m Ω		$R_{DC\ typ}$: 19.0 m Ω	$R_{DC\ typ}$: 22.0 m Ω	$R_{DC\ typ}$: 29.0 m Ω
	744 383 340 068	744 383 340 10	744 383 340 12		744 383 340 15	744 383 340 22	744 383 340 33
	L: 0.68 μ H	L: 1.0 μ H	L: 1.2 μ H		L: 1.5 μ H	L: 2.2 μ H	L: 3.3 μ H
	I_{IC} : 3.5 A	I_{IC} : 2.75 A	I_{IC} : 2.65 A		I_{IC} : 2.0 A	I_{IC} : 1.80 A	I_{IC} : 1.4 A
	I_{SAT} : 7.7 A	I_{SAT} : 6.6 A	I_{SAT} : 6.0 A		I_{SAT} : 5.7 A	I_{SAT} : 5.0 A	I_{SAT} : 4.0 A
	$R_{DC\ typ}$: 36.0 m Ω	$R_{DC\ typ}$: 42.1 m Ω	$R_{DC\ typ}$: 55.0 m Ω		$R_{DC\ typ}$: 80.0 m Ω	$R_{DC\ typ}$: 100 m Ω	$R_{DC\ typ}$: 156.3 m Ω
	744 383 340 47	744 383 340 56	744 383 340 68	3015	744 383 350 10	744 383 350 22	744 383 350 33
	L: 4.7 μ H	L: 5.6 μ H	L: 6.8 μ H		L: 1.0 μ H	L: 2.2 μ H	L: 3.3 μ H
	I_{IC} : 1.1 A	I_{IC} : 1.0 A	I_{IC} : 0.88 A		I_{IC} : 4.8 A	I_{IC} : 1.8 A	I_{IC} : 1.7 A
	I_{SAT} : 3.80 A	I_{SAT} : 3.0 A	I_{SAT} : 2.7 A		I_{SAT} : 4.5 A	I_{SAT} : 3.5 A	I_{SAT} : 3.2 A
	$R_{DC\ typ}$: 267.7 m Ω	$R_{DC\ typ}$: 338.3 m Ω	$R_{DC\ typ}$: 368.2 m Ω		$R_{DC\ typ}$: 39.0 m Ω	$R_{DC\ typ}$: 94.0 m Ω	$R_{DC\ typ}$: 114 m Ω
	744 383 350 47	744 383 350 68	744 383 351 00		744 383 351 50	744 383 352 20	744 383 353 30
	L: 4.7 μ H	L: 6.8 μ H	L: 10.0 μ H		L: 15.0 μ H	L: 22.0 μ H	L: 33.0 μ H
	I_{IC} : 1.5 A	I_{IC} : 1.1 A	I_{IC} : 0.85 A		I_{IC} : 0.65 A	I_{IC} : 0.60 A	I_{IC} : 0.50 A
	I_{SAT} : 2.8 A	I_{SAT} : 2.4 A	I_{SAT} : 2.0 A		I_{SAT} : 1.71 A	I_{SAT} : 1.60 A	I_{SAT} : 1.30 A
	$R_{DC\ typ}$: 141 m Ω	$R_{DC\ typ}$: 250 m Ω	$R_{DC\ typ}$: 446 m Ω		$R_{DC\ typ}$: 720 m Ω	$R_{DC\ typ}$: 940 m Ω	$R_{DC\ typ}$: 1210 m Ω
	744 383 354 70	3020	744383360033	744 383 360 047	744 383 360 068	744 383 360 10	744 383 360 12
	L: 47.0 μ H		L: 0.33 μ H	L: 0.47 μ H	L: 0.68 μ H	L: 1.0 μ H	L: 1.2 μ H
	I_{IC} : 0.39 A		I_{IC} : 5.5 A	I_{IC} : 4.8 A	I_{IC} : 4.5 A	I_{IC} : 4.0 A	I_{IC} : 3.9 A
	I_{SAT} : 1.18 A		I_{SAT} : 8.3 A	I_{SAT} : 8.0 A	I_{SAT} : 6.2 A	I_{SAT} : 5.0 A	I_{SAT} : 4.75 A
	$R_{DC\ typ}$: 2090 m Ω	$R_{DC\ typ}$: 14.0 m Ω	$R_{DC\ typ}$: 18.0 m Ω	$R_{DC\ typ}$: 22.0 m Ω	$R_{DC\ typ}$: 26.0 m Ω	$R_{DC\ typ}$: 30.0 m Ω	
	744 383 360 15	744 383 360 22	744 383 360 33	744 383 360 47	744 383 360 68	744 383 361 00	
	L: 1.5 μ H	L: 2.2 μ H	L: 3.3 μ H	L: 4.7 μ H	L: 6.8 μ H	L: 10.0 μ H	
	I_{IC} : 3.7 A	I_{IC} : 2.4 A	I_{IC} : 2.2 A	I_{IC} : 1.9 A	I_{IC} : 1.6 A	I_{IC} : 1.2 A	
	I_{SAT} : 4.5 A	I_{SAT} : 4.3 A	I_{SAT} : 4.25 A	I_{SAT} : 3.9 A	I_{SAT} : 2.85 A	I_{SAT} : 2.35 A	
	$R_{DC\ typ}$: 33.0 m Ω	$R_{DC\ typ}$: 67.0 m Ω	$R_{DC\ typ}$: 99.0 m Ω	$R_{DC\ typ}$: 137 m Ω	$R_{DC\ typ}$: 168 m Ω	$R_{DC\ typ}$: 280 m Ω	

Important information: Würth Elektronik's design kits contain reference components. These components correspond with the current product development status on the day of supply. Exchange of the reference components to components with up-to-date product development status is not carried out automatically. No liability is taken for the use of these reference components. Therefore, please request new samples prior to releases for series production and product release.

Please check datasheets on www.we-online.com for specifications.
 Würth Elektronik eiSos GmbH & Co. KG, EMC & Inductive Solutions. © 2014

All products
in stock!