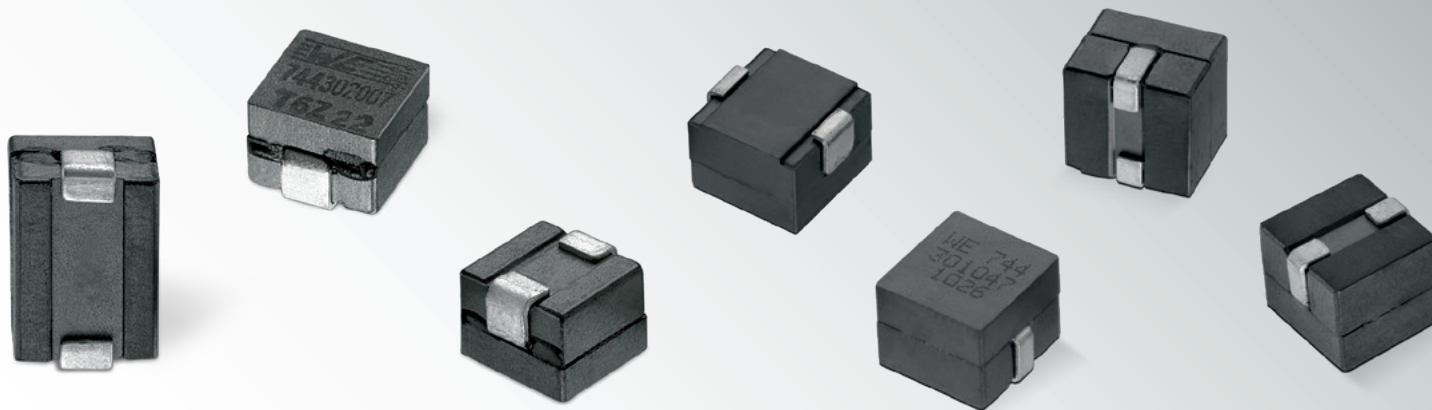


DESIGN KIT

WE-HCM SMD High Current Flat Wire Inductor



SIZE:

7050 / 7070 / 1050 / 1052 / 1070 /
1078 / 1190 / 1350 / 1390

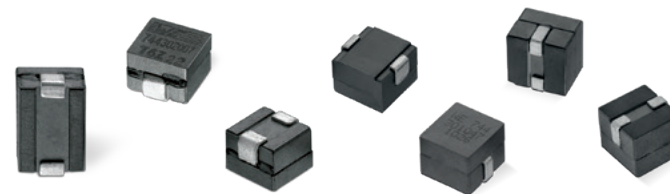
TECHNICAL DATA:

L : 72 – 470 nH
 I_R : 25 – 47.5 A
 I_{SAT} : 20 – 125 A
 R_{DC} : 0.155 – 0.370 m Ω

Order Code 744 300

Version 2.0

WE-HCM SMD High Current Flat Wire Inductor



1190		744 301 025		744 301 033		744 301 047	
L:	250 nH	L:	330 nH	L:	470 nH		
I _R :	38 A	I _R :	38 A	I _R :	38 A		
I _{SAT} :	65 A	I _{SAT} :	46 A	I _{SAT} :	35 A		
R _{DC} :	0.320 mΩ	R _{DC} :	0.320 mΩ	R _{DC} :	0.320 mΩ		

7050		744 302 007		744 302 010		744 302 015	
L:	72 nH	L:	105 nH	L:	150 nH		
I _R :	30 A	I _R :	30 A	I _R :	30 A		
I _{SAT} :	60 A	I _{SAT} :	45 A	I _{SAT} :	32 A		
R _{DC} :	0.235 mΩ	R _{DC} :	0.235 mΩ	R _{DC} :	0.235 mΩ		

1050		744 303 012	
L:	120 nH	L:	120 nH
I _R :	31 A	I _R :	31 A
I _{SAT} :	55 A	I _{SAT} :	55 A
R _{DC} :	0.325 mΩ	R _{DC} :	0.325 mΩ

1050		744 303 015		744 303 022	
L:	155 nH	L:	220 nH		
I _R :	31 A	I _R :	31 A		
I _{SAT} :	42 A	I _{SAT} :	30 A		
R _{DC} :	0.325 mΩ	R _{DC} :	0.325 mΩ		

1078		744 308 101 0		744 308 101 2		744 308 101 5		744 308 101 8	
L:	100 nH	L:	120 nH	L:	150 nH	L:	180 nH		
I _R :	38 A	I _R :	38 A	I _R :	38 A	I _R :	38 A		
I _{SAT} :	100 A	I _{SAT} :	85 A	I _{SAT} :	67 A	I _{SAT} :	60 A		
R _{DC} :	0.290 mΩ	R _{DC} :	0.290 mΩ	R _{DC} :	0.290 mΩ	R _{DC} :	0.290 mΩ		

1078		744 308 101 0		744 308 101 2		744 308 101 5		744 308 101 8	
L:	100 nH	L:	120 nH	L:	150 nH	L:	180 nH		
I _R :	38 A	I _R :	38 A	I _R :	38 A	I _R :	38 A		
I _{SAT} :	100 A	I _{SAT} :	85 A	I _{SAT} :	67 A	I _{SAT} :	60 A		
R _{DC} :	0.290 mΩ	R _{DC} :	0.290 mΩ	R _{DC} :	0.290 mΩ	R _{DC} :	0.290 mΩ		

1078		744 308 102 2		744 308 103 0		744 308 104 0	
L:	220 nH	L:	300 nH	L:	400 nH		
I _R :	38 A	I _R :	38 A	I _R :	38 A		
I _{SAT} :	45 A	I _{SAT} :	32 A	I _{SAT} :	21 A		
R _{DC} :	0.290 mΩ	R _{DC} :	0.290 mΩ	R _{DC} :	0.290 mΩ		

1350		744 305 022		744 305 033		744 305 040	
L:	220 nH	L:	330 nH	L:	400 nH		
I _R :	26 A	I _R :	26 A	I _R :	26 A		
I _{SAT} :	42 A	I _{SAT} :	26 A	I _{SAT} :	20 A		
R _{DC} :	0.155 mΩ	R _{DC} :	0.155 mΩ	R _{DC} :	0.155 mΩ		

1052		744 306 020	
L:	200 nH	L:	200 nH
I _R :	25 A	I _R :	25 A
I _{SAT} :	36 A	I _{SAT} :	36 A
R _{DC} :	0.260 mΩ	R _{DC} :	0.260 mΩ

1052		744 306 025		744 306 030	
L:	250 nH	L:	300 nH		
I _R :	25 A	I _R :	25 A		
I _{SAT} :	32 A	I _{SAT} :	24 A		
R _{DC} :	0.260 mΩ	R _{DC} :	0.260 mΩ		

7070		744 307 012	
L:	120 nH	L:	120 nH
I _R :	26 A	I _R :	26 A
I _{SAT} :	48 A	I _{SAT} :	48 A
R _{DC} :	0.290 mΩ	R _{DC} :	0.290 mΩ

7070		744 307 016		744 307 022	
L:	160 nH	L:	220 nH		
I _R :	26 A	I _R :	26 A		
I _{SAT} :	41 A	I _{SAT} :	29 A		
R _{DC} :	0.290 mΩ	R _{DC} :	0.290 mΩ		

1070		744 308 015		744 308 020	
L:	150 nH	L:	200 nH		
I _R :	25 A	I _R :	25 A		
I _{SAT} :	58 A	I _{SAT} :	48 A		
R _{DC} :	0.370 mΩ	R _{DC} :	0.370 mΩ		

1070		744 308 025		744 308 033		744 308 040	
L:	250 nH	L:	330 nH	L:	400 nH		
I _R :	25 A	I _R :	25 A	I _R :	25 A		
I _{SAT} :	44 A	I _{SAT} :	30 A	I _{SAT} :	26 A		
R _{DC} :	0.370 mΩ	R _{DC} :	0.370 mΩ	R _{DC} :	0.370 mΩ		

1390		744 309 012		744 309 025		744 309 033		744 309 047	
L:	120 nH	L:	250 nH	L:	330 nH	L:	470 nH		
I _R :	47.5 A	I _R :	47.5 A	I _R :	47.5 A	I _R :	47.5 A		
I _{SAT} :	125 A	I _{SAT} :	81 A	I _{SAT} :	62.5 A	I _{SAT} :	40.5 A		
R _{DC} :	0.165 mΩ	R _{DC} :	0.165 mΩ	R _{DC} :	0.165 mΩ	R _{DC} :	0.165 mΩ		

1390		744 309 025		744 309 033		744 309 047	
L:	250 nH	L:	330 nH	L:	470 nH		
I _R :	47.5 A	I _R :	47.5 A	I _R :	47.5 A		
I _{SAT} :	81 A	I _{SAT} :	62.5 A	I _{SAT} :	40.5 A		
R _{DC} :	0.165 mΩ	R _{DC} :	0.165 mΩ	R _{DC} :	0.165 mΩ		

EMC COMPONENTS | **INDUCTORS** | TRANSFORMERS | RF COMPONENTS | CIRCUIT PROTECTION | EMC SHIELDING MATERIAL | LEDs | CONNECTORS | SWITCHES | ASSEMBLY TECHNIQUE | REDCUBE TERMINALS | CAPACITORS

Important information: Würth Elektronik's design kits contain reference components. These components correspond with the current product development status on the day of supply. Exchange of the reference components to components with up-to-date product development status is not carried out automatically. No liability is taken for the use of these reference components. Therefore, please request new samples prior to releases for series production and product release.

**All products
ex stock!**

Please check datasheets on www.we-online.com for specifications. Würth Elektronik eiSos GmbH & Co. KG, EMC & Inductive Solutions. © 2018