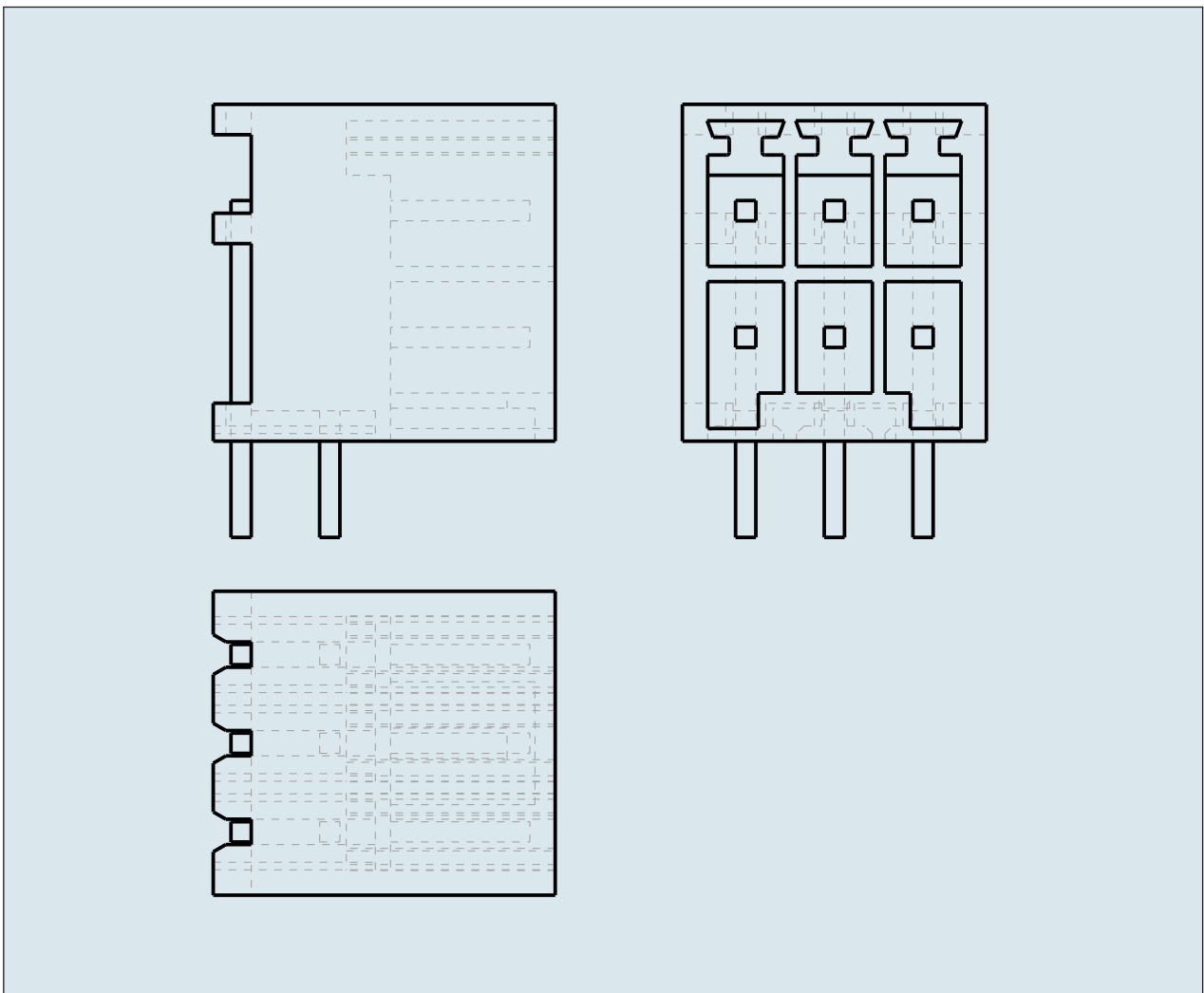
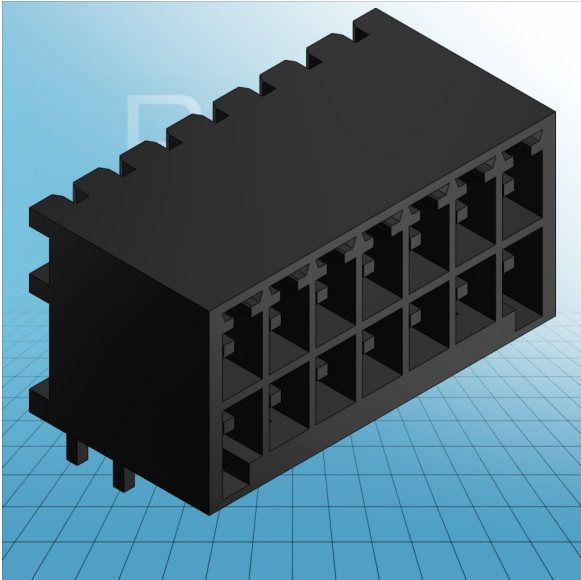


HEADER RIGHT ANGLE SOLDER PIN
0.8x0.8 MM PIN SPACING 3.5 MM / 0.
138 IN 100% PROTECTED AGAINST
MISMATING



**HEADER RIGHT ANGLE SOLDER PIN
0.8x0.8 MM PIN SPACING 3.5 MM / 0.
138 IN 100% PROTECTED AGAINST
MISMATING
713-1423 TO 713-1438**

ITEM-NO. (ITEM-NO.)	713-1427
Measured voltage (Measured voltage / V)	160
Measured shock voltage (Measured shock voltage / kV)	2.5
Pollution degree (Pollution degree)	2
Current intensity (Current intensity / A)	10
RM (PIN SPACING / mm)	3.5
P (NO. OF POLES)	14
Height (Height / mm)	13.3
Width (Width / mm)	26
Depth (Depth / mm)	13.5
No. of connection Points (No. of connection Points)	14
No. of potentials (No. of potentials)	14
COLOR (COLOR)	schwarz
Comment (Comment)	$L = ((\text{No. of poles} / 2) - 1) \times \text{Pin Spacing} + 5 \text{ mm}$
Dimensions (Dimensions)	1.1 +0.1 mm