

"Maximum volume" workstation**JET.CS11XL**

- Comprising a JET.XL 7-drawer roller cabinet and a JET.XL 4-drawer chest.
- Drawer size : 569 x 421 mm.
- Roller cabinet specification as JET.7GXLL.
- Chest specification as JET.C4GXLL.

| | Dimensions mm | ΔΔ kg |
|-------------------|------------------|----------|
| JET.CS11XL | 1380 x 780 x 520 | 121,5 |

**"Industrial maintenance" workstation****JET.7MIXL**

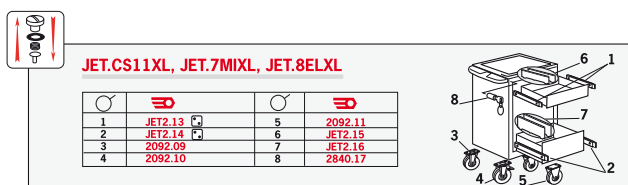
- Comprising :
 - 1 JET.XL seven-drawer roller cabinet.
 - 1 Paper roll holder (JET.A5-3GXLL).
 - 1 Waste bin. (JET.A5-2XL).
 - 1 Vertical panel for drawings, procedures or tools (JET.A6GXLL).
 - 1 Side cupboard for long and/or expensive tools (JET.A8GXLL).
 - 1 anti-theft bar for increased security (JET.A9XL).

| | Dimensions with panel installed mm | ΔΔ kg |
|------------------|---------------------------------------|----------|
| JET.7MIXL | 1375 x 780 x 520 | 91 |

**"Electromechanical engineering" workstation****JET.8ELXL**

- Comprising :
 - 1 JET.XL eight-drawer roller cabinet.
 - 1 Nuts and screws stand (JET.A7GXLL).
 - 1st drawer fitted with 3 trays for fasteners and small components (PL.384) and a small parts tray (PL.636).
 - 1 Document holder (JET.A2GXLL).
 - 1 Compartmented magnetic shelf and 1 paper roll holder (JET.A5-1GXLL).
 - 1 Waste bin (JET.A5-2XL).

| | Dimensions with panel installed mm | ΔΔ kg |
|------------------|---------------------------------------|----------|
| JET.8ELXL | 1375 x 780 x 520 | 91 |



Adjustable windshield support

2800.A8

- Instantly attaches onto a roller cabinet.
- Dimensions : 540 x 160 x 100 mm.
- ΔΔ : 2.8 kg.



Carry tray and holder

JET.A11

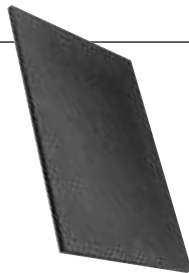
- Heavy-duty plastic carry tray.
- Very handy for carrying tools to the point of use.
- Complete with connection kit for quick installation.
- Dimensions : L.115 x P.385 x H.255 mm excluding handle.
- ΔΔ : 3 kg.



Wooden worktop

JET.A4

- For JET.XL roller cabinet.
- Fits easily into the worktop recess.
- Dimensions L. 588 x D. 439 x H. 12.5 mm.
- ΔΔ : 1.95 kg.



Patterned aluminium worktop

JET.A12XL

- Very resistant.
- Fits easily into the worktop recess of JET.XL roller cabinets.
- Dimensions L. 588 x W. 439.
- ΔΔ : 1.105 kg.



Sheet of tags

2225.A1

- Drawer organization and identification.



Rubber matting

2600.A2

- Easy to cut.
- 534 x 390 mm.
- For lining drawer bottoms.
- ΔΔ : 210 g.



Drawer partitions

- For small drawers :
 - JET.XL or CHRONO.XL drawers = JET2.15.
 - CHRONO drawers = CH5T-50.
- For medium-sized drawers :
 - JET.XL or CHRONO.XL drawers = JET2.16.
 - CHRONO drawers = CH5T-100.

| | Height mm |
|-----------------|-----------|
| JET2.15 | 60 |
| JET2.16 | 130 |
| CH5T-50 | 50 |
| CH5T-100 | 100 |



Accessory application table

| | Vertical panel | Vertical Nuts and screws stand | Side cupboard | Anti-theft bar | Carry tray and holder | Pivoting shelf | Bottle holder | Document holder | Wooden worktop | Patterned aluminium worktop |
|------------------|----------------|--------------------------------|---------------|----------------|-----------------------|----------------|---------------|-----------------|--------------------|-----------------------------|
| JET | JET.A6G | JET.A7G | JET.A8G | JET.A9 | JET.A11 | JET.A3 | JET.A1G | JET.A2G | JET.A4/ JET.A4G | |
| JET.XL | JET.A6GXL | JET.A7GXL | JET.A8GXL | JET.A9XL | JET.A11 | JET.A3 | JET.A1GXL | JET.A2GXL | JET.A4XL | JET.A12XL |
| CHRONO.XL | | | | | | | JET.A1GXL | JET.A2GXL | | |

| | Cleaning accessories | Shelf + roll holder | Waste bin | Roll holder | Windshield support | Rubber matting | Drawer labels | Front storage tray | Side storage tray | Fastener module |
|------------------|----------------------|---------------------|------------|-------------|--------------------|----------------|---------------|--------------------|-------------------|-----------------|
| JET | JET.A5G | JET.A5-1G | JET.A5-2 | JET.A5-3G | 2800.A8 | 2600.A2 | 2225.A1 | PL.636 | | PL.384 |
| JET.XL | JET.A5GXL | JET.A5-1GXL | JET.A5-2XL | JET.A5-3GXL | 2800.A8 | 2600.A2 | 2225.A1 | PL.656 | PL.655 | PL.384 |
| CHRONO.XL | JET.A5GXL | JET.A5-1GXL | JET.A5-2XL | JET.A5-3GXL | 2800.A8 | 2600.A2 | 2225.A1 | PL.656 | PL.655 | PL.384 |



FACOM MODULAR SYSTEM

PL.655



PL.656

COMPATIBLE WITH ALL FACOM ROLLER CABINET RANGES

For **CHRONO.XL** and **JET.XL**

If you have a **Chrono.XL** or **JET.XL** roller cabinet :

- Position your modules.
- Position your modules and insert a **PL.655** to the left or right hand side of the drawer and a **PL.656** at the front or back of the drawer.



If you already have storage modules and wish to use them in your new **XL** roller cabinet.

- Add a side storage tray **PL.655**, ideal for storing nuts and bolts, to the left or the right of your drawer.



Information

If you already own a **CHRONO** or **JET** roller cabinet and you wish to fit it with storage modules, nothing could be simpler. Simply detach the break-off section and add small the parts trays to secure the modules in place if required.

For **CHRONO** and **JET**

If you have a **Jet** roller cabinet

- Remove the snap-off section.
- Position your modules.
- Place the **PL.636** edge storage tray along the front or the back of the drawer.



PL.636

If you have a **Chrono** roller cabinet

- Position your modules.
- Add the new **PL.655** small parts tray on the left- or right-hand side of your drawer. Ideal for storing screws, nuts and bolts.

Small parts tray

PL.636

- For securing modules and storing small tools and components.

ΔΔ : 150 g

Side storage tray for XL drawer

PL.655

- For securing modules and storing small tools and components.
- Can be placed along the right- or left-hand side of the drawer.

ΔΔ : 155 g.

Front/back storage tray for XL drawer

PL.656

- For securing modules and storing small tools and components.
- Can be placed along the front or the back of the drawer.

ΔΔ : 165 g.



FACOM MODULAR STORAGE SYSTEM



ORGANISE AND CUSTOMISE YOUR WORKSTATION

- 1/3 drawer width module, for adapting your equipment to your needs.
- The Facom workstation configuration tool (www.facom.com/fr/servantes/index.html) simplifies the choice and organisation of tools.

STORED TOOLS = PRODUCTIVITY, COMFORT AND SAFETY

- instant access to all your tools without wasting time.
- Optimum safety : no more rummaging through loose tools in a drawer.



MOD.440-1

- 16 combination wrenches 6 to 24 mm (PL.670)



MOD.440-2

- 4 combination wrenches 27 to 32 mm (PL.671)



MOD.40R

- 14 ratchet-effect combination wrenches 8 to 24 mm (PL.352A).



MOD.44-1

- 9 open-end wrenches 6 to 24 mm (PL.315).



MOD.44-2

- 3 open-end wrenches 26 to 32 mm (PL.316).



MOD.75-1

- 10 socket wrenches 8 to 19 mm (PL.625).



MOD.55-1

- 7 offset ring wrenches 6 to 19 mm (PL.317A).



MOD.55-2

- 3 ring wrenches 22 to 28 mm (PL.318A).



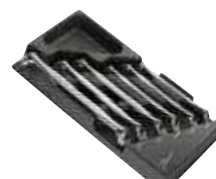
MOD.67XL

- 6 Large sized wrenches : 21 to 32 mm (PL.653).



MOD.64J7

- 7-piece 12-point ratchet ring wrench module, 6 to 19 mm (PL.608A).



MOD.66A-1

- 6 hinged socket wrenches 6 to 19 mm (PL.319A).



MOD.68BHB

- 7 combination wrenches 6 to 19 mm (PL.608).



MOD.97

- 6-piece metric double-ended forged socket-wrench module, 8 to 19 mm (PL.359).



MOD.43

- Pipe wrenches 7 to 19 mm (PL.635).



MOD.TX1

- 24 Torx® sockets (PL.360).



MOD.R1

- Sockets \square 1/4" and accessories/keys/bits - 35 items (PL.321).

Facom modular storage system



MOD.R5

• 1/4" 6-point sockets, metric keys and bits (PL.658).



MOD.J1

• Sockets \square 3/8", 8 to 22 mm and accessories (PL.322).



MOD.J5

• 3/8" 6-point sockets 8 to 22 mm (PL.322A).



MOD.J7

• 3/8" 6-point sockets 8 to 24 mm (PL.665).



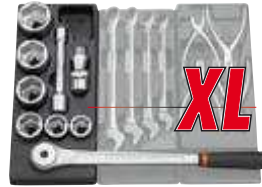
MOD.S1

• Sockets \square 1/2", 10 to 32 mm and accessories (PL.323).



MOD.CDX

• CDX sockets 8 to 27 mm and accessories (PL.355).



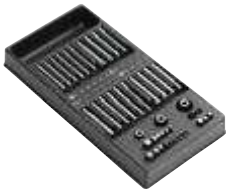
MOD.K2

• 3/4" 6-point sockets 34 to 55 mm (PL.662)..



MOD.SHP

• Sockets \square 1/2" with long-reach monobloc bits (PL.336).



MOD.E41

• 41 bits and 3 bit holders (PL.621).



MOD.E20L

• 20 drive bits.
• Tray PL.624.



MOD.A1

• 8 Protwist screwdrivers for slotted heads 3 to 8 - "PH" 1 and 2 (PL.325).



MOD.A3

• 8 Protwist screwdrivers : 4 standard and 4 stubby (PL.326).



MOD.84TZS

• 7 spherical head tee-handle hexagon keys (PL.329).



MOD.ANX

• 7 Torx® screwdrivers 10 to 40 (PL.327).



MOD.ANXR

• 7 Protwist Resistorx® screwdrivers 10 to 40 mm (PL.327).



MOD.89TX

• 7 tee-handle Torx® keys (PL.329).



MOD.A1VE

• 8 VE 1,000 Volt insulated screwdrivers (PL.325).



MOD.VE

• 3 pliers 1,000 Volt insulated (PL.622).



MOD.CPE

• 3 sheathed engineers pliers (PL.627).



MOD.PR11

• Lock-grip pliers T5.L and multigrip pliers 181.25CPE (PL.330).



MOD.PR8

• Lock-grip pliers 500 and multigrip pliers 180 (PL.330).



MOD.MT1

• 6 electronics pliers (PL.612).



MOD.PC1

• 4 circlip pliers (PL.332).

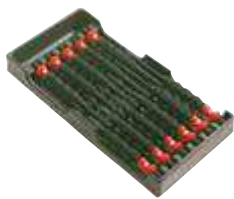


MOD.MI1

• Hammer tools (PL.333).



2 Facom modular storage system



MOD.CG

• Sheathed drift punch, nail set and centre punch (PL.334).



MOD.CG1

• Sheathed drift punches, flat chisels and cape chisels (PL.611).



MOD.NS260

• Impact driver and bits (PL.380).



MOD.LIM

• 5 files with handles (PL.606).



MOD.Y105

• Riveter and selection of rivets (PL.377).



PL.384

• Storage for small components.
ΔΔ : 0.217 kg.



MOD.U46CL

• Oil change and filter module (PL.399).



MOD.DF

• Disc brake servicing module (PL.629).



MOD.196-1

• Drum brake servicing module (PL.628).



MOD.BRA

• Diesel spark plug servicing module (PL.667).



MOD.CAR1

• Forming tools (PL.396).



MOD.850

• Milled files (PL.630).



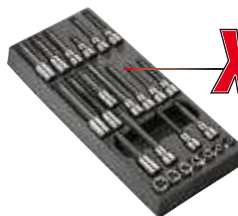
MOD.234

• Measuring and scribing module (PL.633).



MOD.MET

• Metrology module (PL.634).



MOD.CH

• Cylinder head tightening and loosening tool module (PL.663).



MOD.BJ

• Module for 16 to 21 mm spark plugs. (PL.161)



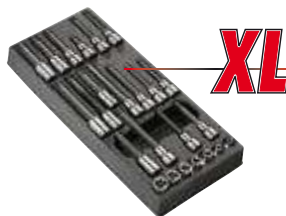
MOD.U306

• Pullers U.306A140 and U.14L + 6 legs (PL.354).



MOD.K1

• 6-point sockets \square 3/4", 34 to 55 mm and accessories - 10 items (PL.324).



MOD.601

• Cylinder head tightening and loosening tool module (PL.663).



MOD.99B

• Saw, tape measure, files (PL.335).

MOD.208

• Wheel nut tightening tools (PL.337A).



MOD.99B

• 7 tee socket-wrenches with universal joint 7 to 19 mm (PL.304).

