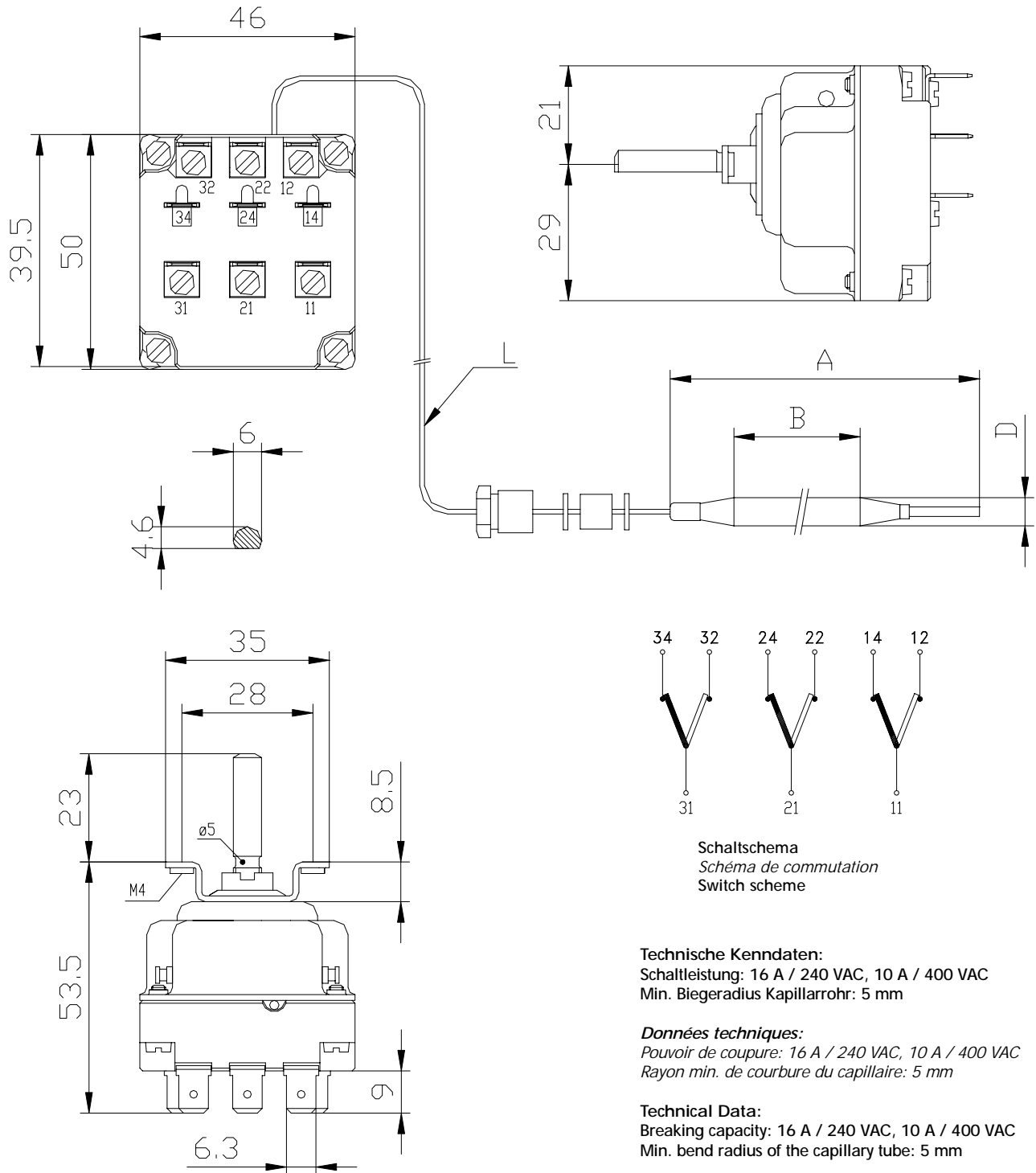




Kapillarrohr-Thermostat, verstellbar, 3-polig  
*Thermostat à capillaire, réglable, 3 pôle*  
 Thermostat with capillary tube, adjustable, 3 pole

Typ 55.34...  
 Typ 55.34...  
 Typ 55.34...



**Ab Lager lieferbar**

**En Stock**

**Delivery from stock**

Typen Nr. Type n° Type n°	Bereich Gamme Range	Diff.	D	A	B	T	L	Bemerkungen Remarques Remarks
	°C	K	mm	mm	mm	°C	mm	
55.34202.010	0 – 40	4	6	215	180	43	870	WK
55.34012.030	30 – 85	4	6	131	96	100	870	O
55.34022.020	30 – 110	5	6	140	105	130	870	O / SB
55.34022.030	30 – 110	5	6	140	105	130	870	O
55.34225.020	30 – 110	5	6	140	105	170	1740	WK / SB
55.34226.020	30 – 110	5	6	140	105	170	2940	WK / SB
55.34024.080	30 – 150	16	6	113	76	260	1480	O
55.34032.030	60 – 200	13	6	75	40	310	870	O
55.34052.010	50 – 300	12	6	79	40	330	840	O
55.34255.010	50 – 300	12	6	79	40	330	1740	WK
55.34259.020	50 – 300	12	6	79	40	330	2260	WK
55.34064.010	100 – 350	12	6	75	40	360	1470	O

	Bemerkungen	Remarques	Remarks
Diff.	= Schaltdifferenz	<i>Hystérésis de Commutation</i>	Commutation difference
D	= Fühler – Durchmesser	<i>Diamètre du bulbe</i>	Sensor diameter
A	= Fühler – Länge	<i>Longueur du bulbe</i>	Sensor length
B	= Aktive – Fühlerlänge	<i>Longueur active du bulbe</i>	Sensor active length
O	= Öffner – Kontakt	<i>Contact ouvert / fermé</i>	Contact open / closed
WK	= Wechselkontakt	<i>Contact inverseur</i>	Alternating contact
SB	= Stopfbüchse	<i>Presse-étoupe monté</i>	Mounted tubing clamp
T	= Max. Fühlertemperatur	<i>Temp. max pour le bulbe</i>	Sensor – Max. Temperature
L	= Kapillarrohrlänge	<i>Longueur de capillaire</i>	Capillary tube length
UL	UL-/CSA – geprüft	<i>UL-/CSA - conforme</i>	UL-/CSA - approved
K	= Kelvin	<i>Kelvin</i>	Kelvin