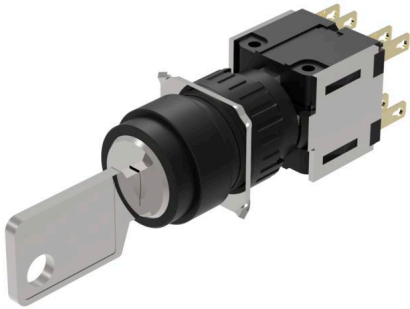


EAO – Your Expert Partner for Human Machine Interfaces

51-372.F22D - Keylock switch 3 positions round - Actuator

51-372.F22D - Keylock switch 3 positions round - Actuator



Attention: The preview is based on a sample product. This can differ from your current configuration.

Attribute

Design	raised
Front dimension	Ø 18 mm
Front form	round
IP front protection	IP65
Mounting cut-out	Ø 16 mm
Contacts	2 NC / 2 NO
Contact material	Gold
Rotary positions	3
Switching action	Maintained (a) - Rest (a) - Maintained (a)
Switching angle	90° left / 90° right
Switching current	5 A
Switching system	Snap-action switching element
Switching voltage	250 V
Terminal	Plug-in terminal
Weight	0.025 kg
Switching rating	250 V @ 5 A

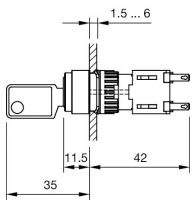
Function

Keylock switch

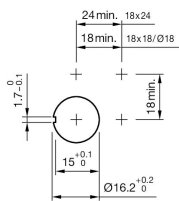
EAO – Your Expert Partner for Human Machine Interfaces

51-372.F22D - Keylock switch 3 positions round - Actuator

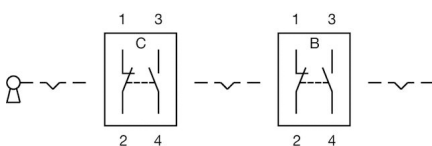
Dimensions



Mounting cut-outs



Wiring diagrams



Additional information

Standard lock: DOM 311

Front plastic black

a = Key remove

Contacts: NC = Normally closed, NO = Normally open

Standard lock: DOM 311

Contacts: NC = Normally closed, NO = Normally open

a = Key remove