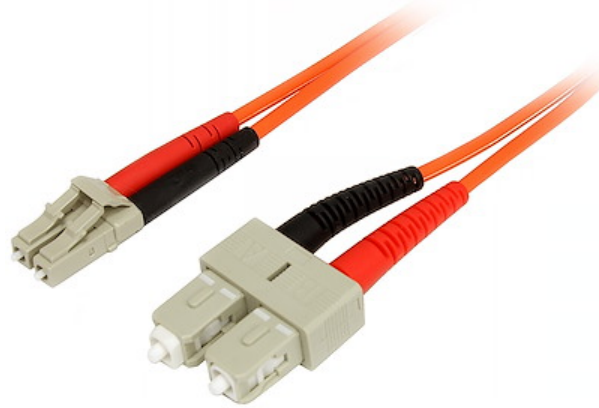


Fiber Optic Cable - Multimode Duplex 50/125 - LSZH - LC/SC - 2 m

**Product ID:** 50FIBLCSC2



The 50FIBLCSC2 2m LSZH LC to SC Fiber Cable features 50/125 micron fiber for high-speed, high bandwidth data transmissions over Gigabit Ethernet and Fiber Channel networks, with support for duplex multimode applications.

This LC-SC patch cable is housed in a LSZH (Low-Smoke, Zero-Halogen) flame retardant jacket, to ensure minimal smoke, toxicity and corrosion when exposed to high sources of heat, in the event of a fire. Making it ideal for use in industrial settings, central offices and schools, as well as residential settings where building codes are a consideration.

Each Duplex 50/125 (OM2) Multimode Fiber Patch Cable is individually tested and certified to be within acceptable optical insertion loss limits for guaranteed compatibility and 100% reliability and is backed by our lifetime warranty.

## Certifications, Reports and Compatibility

### Applications

- Ideal solution for data applications requiring high speed data transmission
- Broadband systems
- Telecommunication / Data communication
- Used by long distance networks with mission critical data

### Features

- Immune to electrical interference

- OM2 (50/125) 500MHz multimode fiber
- LSZH (Low-Smoke, Zero-Halogen) cable jacket
- Attenuation loss meets or exceeds industry standards

---

#### Hardware

Warranty	Lifetime
Fire Rating	LSZH Rated (Low Smoke Zero Halogen)
Fiber Size	50/125

---

#### Performance

Maximum Data Transfer Rate	10Gbps
Cable Rating	1Gbps / 10Gbps
Fiber Classification	OM2
Type	Multi Mode

---

#### Connector(s)

Connector A	Fiber Optic LC Duplex
Connector B	Fiber Optic SC Duplex

---

#### Environmental

Operating Temperature	-20C to 60C (-4F to 140F)
Storage Temperature	-20C to 60C (-4F to 140F)
Humidity	0~90% RH

---

#### Physical Characteristics

Color	Orange
Cable Length	6.6 ft [2 m]
Product Length	6.6 ft [2.0 m]
Product Width	0.6 in [15.2 mm]
Product Height	0.4 in [10.7 mm]
Weight of Product	1.2 oz [35.0 g]



---

**Packaging Information**

Package Length	8.7 in [22.0 cm]
Package Width	7.9 in [20.0 cm]
Package Height	1.0 in [26.0 mm]
Shipping (Package) Weight	1.6 oz [44.0 g]

---

**What's in the Box**

Included in Package	2m Multimode 50/125 Duplex Fiber Patch Cable LC – SC
---------------------	--

---

***\*Product appearance and specifications are subject to change without notice.***

