

battery type: Lithium - Iron Disulfide
battery size: IEC: FR03; ANSI: AAA; L92; Micro
chemical system: Li-FeS₂

Conditions

nominal voltage: 1.5 V
open circuit voltage: 1.79...1.89 V new battery
 1.75...1.89 V after 1 year storage at 20°C

capacity rated: 1200 mAh all measurements at 20°C ambient
 discharge at 75ohms load; 24hours/day
 End Voltage (EV): 0.9V
minimum: 1100 mAh discharge at 20mA constant current
 End Voltage (EV): 0.9V
 1050 mAh discharge at 500mA constant current
 End Voltage (EV): 0.8V

typical service output (new batteries)

≥ 670 cycles load resistor 3.6ohms; EV: 0.9V
 discharge 15s/m 24h/d
 ≥ 220 min load resistor: 5.1ohms; EV: 0.9V
 discharge 4min/h 8h/d
 ≥ 460 min load resistor: 10ohms; EV: 0.9V
 discharge 1h/d
 ≥ 15 h load resistor: 20ohms; EV: 0.9V
 discharge 24h/d
 ≥ 60 h load resistor: 75ohms; EV: 0.9V
 discharge 4h/d

internal resistance: ≤ 0.3 Ω at 1kHz, sine wave measurement
 according to IEC 896-2

shelf life: 10 years under proper storage conditions

leakage resistance

over discharge: no leakage 20ohms continuous discharge for 48h; ta: 20°C; RH: 60±15%
 high temperature: no leakage store 20days at ta: 60°C; RH:90±5%

ambient temperature range:

- 40...60 °C

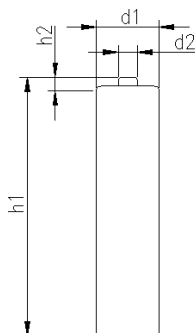
recommended storage conditions:

-20...40 °C ambient temperature
 45...75 % rel. humidity

mechanical specifications

cell dimensions


diameter d1: 10.4 - 0.5 mm
 diameter d2: 3.6 - 0.4 mm
 height h1: 44.4 - 0.6 mm
 height h2: 1.2 - 0.35 mm
 weight: 8 ± 1 g



blister card

dimensions: 85 x 120 mm
 weight (incl. batteries): 28 ± 2 g

approvals: UL1642 tested

	ANSMANN Specifications for model:	Ansmann Lithium Battery AAA - size 2pcs blister
	data sheet no. / part no.	5021013
	Version no.	
	author / date	Gramlich / 29.09.2010