

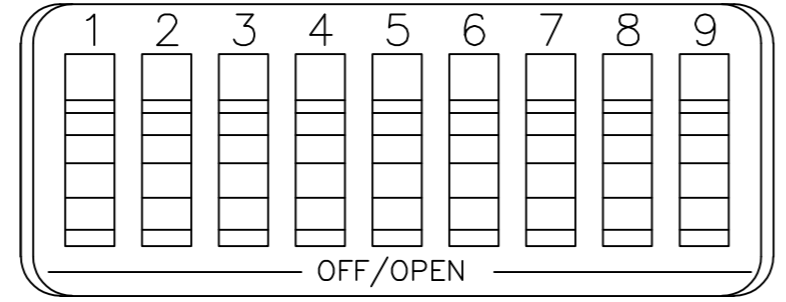
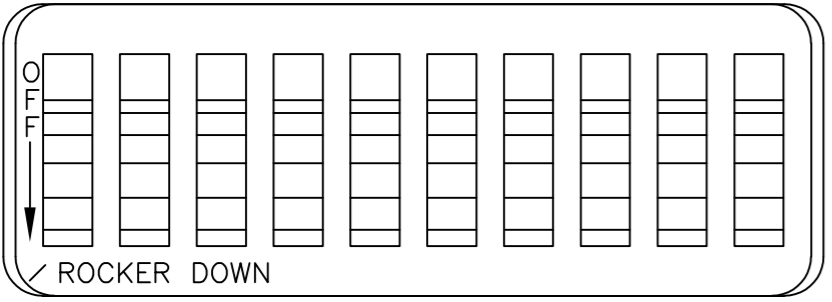
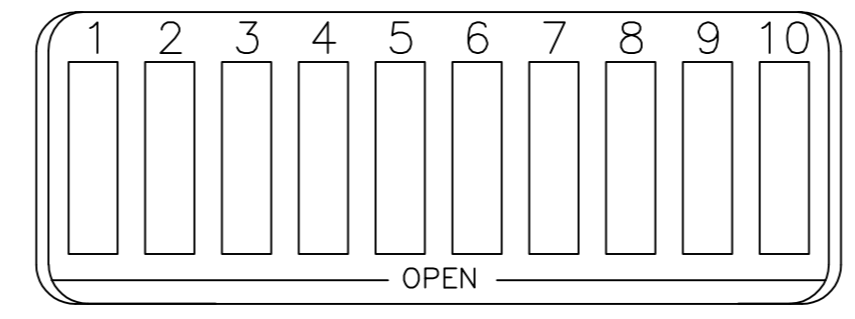
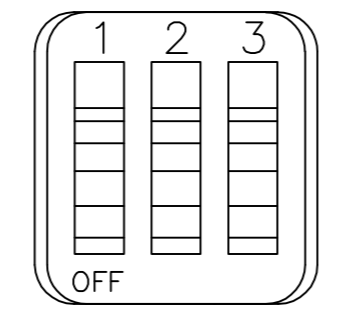
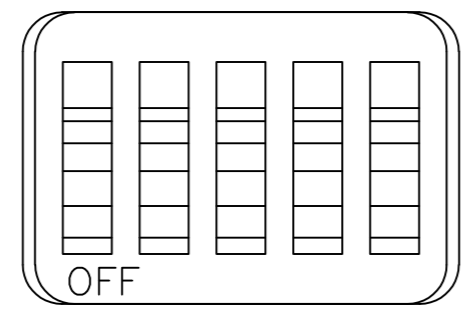
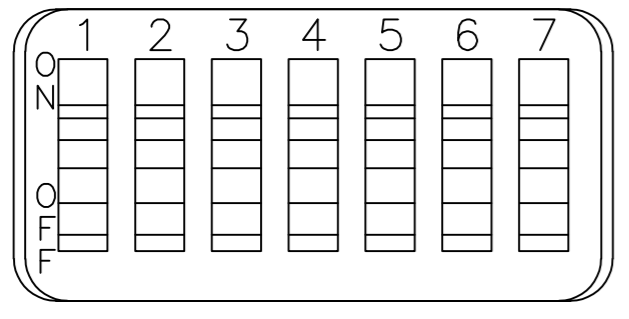
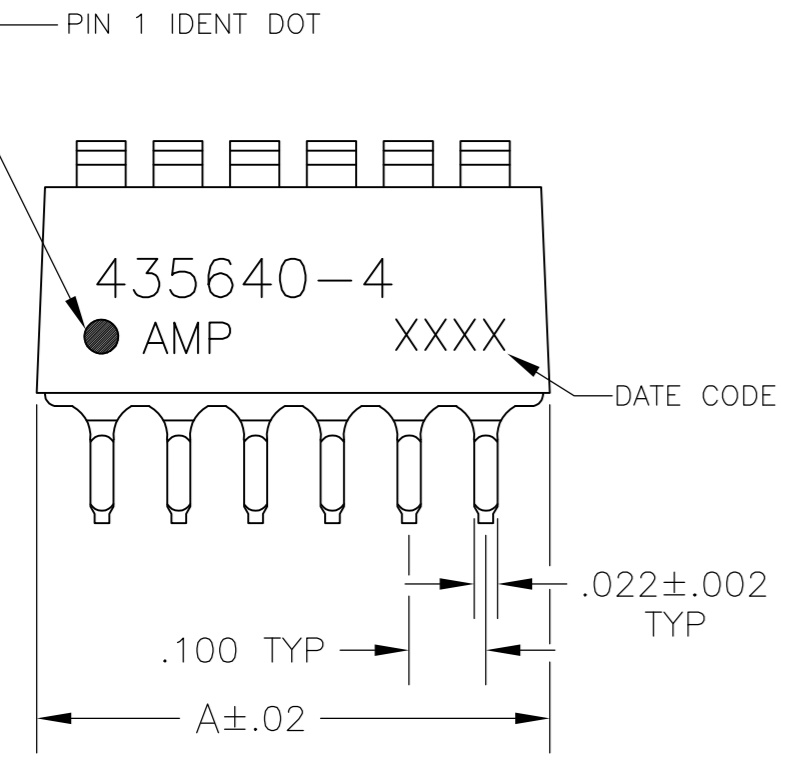
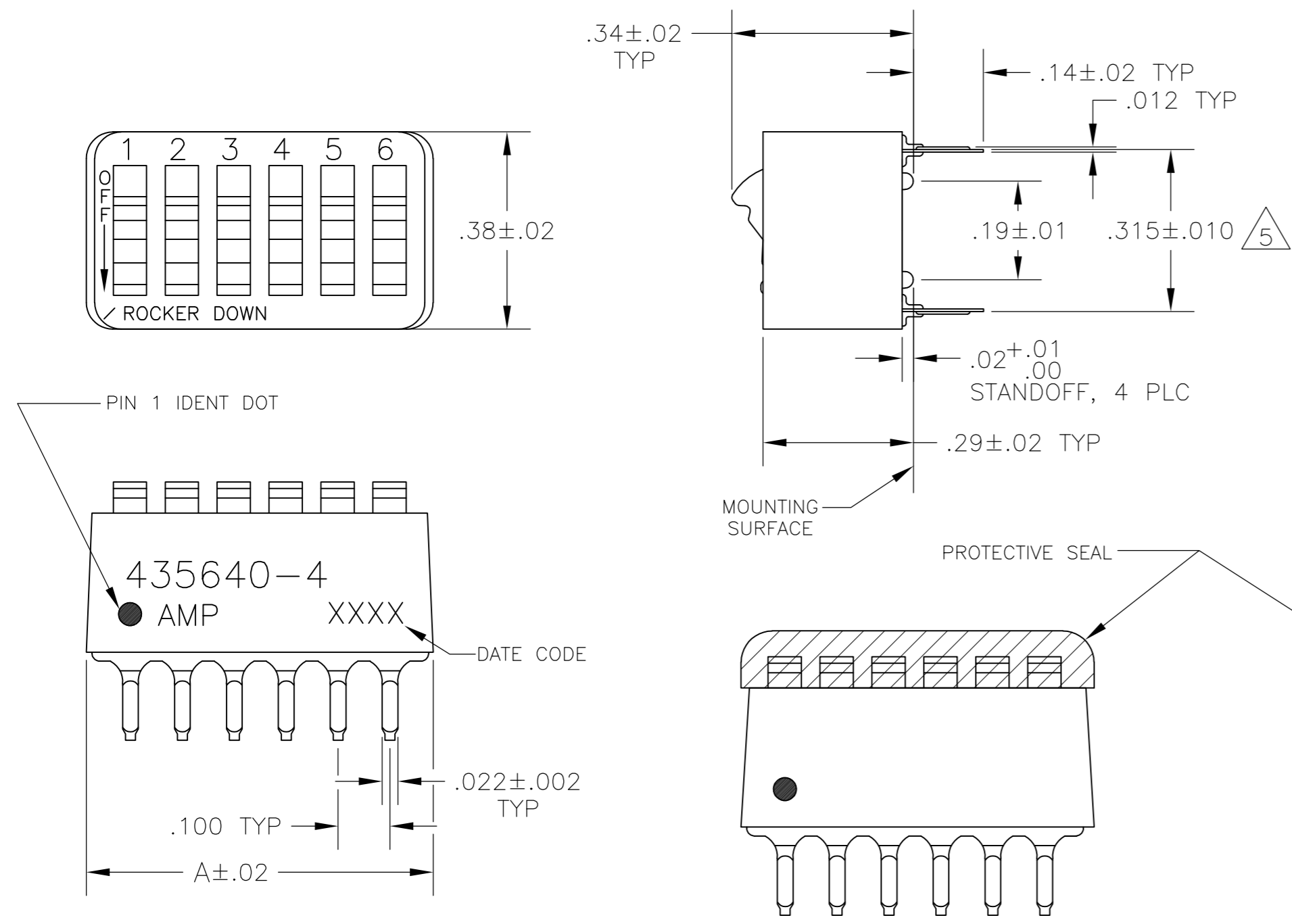
THIS DRAWING IS UNPUBLISHED. RELEASED FOR PUBLICATION
 © COPYRIGHT BY TYCO ELECTRONICS CORPORATION. ALL INTERNATIONAL RIGHTS RESERVED.

LOC	DIST	REVISIONS					
AD	00	P	LTR	DESCRIPTION	DATE	DWN	APVD
		AM2		REVISED PER ECO-10-017721	30AUG10	HMR	MW

- FOR ADDITIONAL SPECIFICATIONS SEE AMP PRODUCT SPEC 108-7532.
- SWITCH SHOWN IN OPEN POSITION.
- ALL CHARACTERS AND ROCKERS ARE WHITE, HOUSING IS BLUE.
- STAMPING WILL VARY ON 2 AND 3 POSITION SIDES DUE TO SPACE RESTRICTIONS.

△ .315 DIMENSION APPLIES AT TERMINAL TIPS.
 TERMINALS ARE .300-.000 AT MOUNTING SURFACE.
 △ STRIPPABLE TRANSPARENT SEAL, SEE FIG 1.

△ OBSOLETE	FIG 6		1.08	10	6-435640-1
			.58	5	6-435640-0
△ OBSOLETE	FIG 7		.48	4	5-435640-9
			.88	8	5-435640-8
			.98	9	5-435640-7
△ OBSOLETE	FIG 5	△ 6	.68	6	5-435640-6
			.58	5	5-435640-5
△ SUPSD BY 5-5435640-4			.48	4	5-435640-4
△ OBSOLETE	FIG 2	△ 6	.88	8	5-435640-3
	FIG 5	△ 6	.88	8	5-435640-2
			1.08	10	5-435640-1
	FIG 3	△ 6	.88	8	5-435640-0
△ SUPSD BY 4-5435640-8			.88	8	4-435640-9
			.58	5	4-435640-8
	NONE		1.08	10	4-435640-7
			1.28	12	4-435640-3
			1.08	10	4-435640-1
			.98	9	4-435640-0
	AS SHOWN	△ 6	.88	8	3-435640-9
			.78	7	3-435640-8
			.68	6	3-435640-7
			.58	5	3-435640-6
			.48	4	3-435640-5
			.38	3	3-435640-4
SUPSD BY 3-435668-3 SUPSD BY 2-435668-6 3-1589670-4	FIG 4		.28	2	3-435640-3
	AS SHOWN		1.28	12	3-435640-2
	FIG 4		.38	3	3-435640-0
			.28	2	2-435640-9
△ OBSOLETE	FIG 2		.78	7	2-435640-2
			1.08	10	435640-7
			.98	9	435640-6
			.88	8	435640-5
	AS SHOWN		.68	6	435640-4
			.58	5	435640-3
			.48	4	435640-2
			.78	7	435640-1
	TOP MARKING				
	PROTECTIVE SEAL	A			
	NO OF POSN				
	PART NO.				



△ OBSOLETE PARTS: OBSOLETE CIS STREAMLINING PER D.RENAUD/D.SINISI

THIS DRAWING IS A CONTROLLED DOCUMENT.		DWN R.TALLEY 15NOV89	Tyco Electronics Corporation Harrisburg, PA 17105-3608	
DIMENSIONS: INCHES		CHK R.L.MILLER 06MAR90	NAME	
TOLERANCES UNLESS OTHERWISE SPECIFIED:		APVD H.LEITER 06MAR90	PRODUCT SPEC	
0 PLC ± -		APPLICATION SPEC		
1 PLC ± -		WEIGHT -		
2 PLC ± -		CUSTOMER DRAWING		
3 PLC ± .005		SCALE 4:1 SHEET 1 of 1 REV AM2		
4 PLC ± -		RESTRICTED TO		
ANGLES ± -		SIZE A2 CAGE CODE 00779 C=435640		
FINISH		DRAWING NO		
CONTACTS: PLATED .000030 MIN GOLD IN CONTACT AREA OVER .000050 MIN NICKEL		PART NO.		