

Insulated Tab Terminal Strips

401 | 12.00 mm (0.473 in) Spacing - 1-12 poles

PICTURES



401

TECHNICAL INFORMATION

Description

Available in PA or PVC

Recommended mounting hardware: M3 pan head screw (#4-40 pan head screw) or similar sized sheet metal screw, self-tapping screw or rivet.

Technical Data

Center to Center Spacing: 12.000 mm (0.473 in)

Bill of Materials

Pole Version : PVC

Molding : Plasticised PVC,

Color : Transparent

Temperature limits :

Short Time : 80°C (176°F)

Continuous : 70°C (158°F)

Temperature Limits : PVC version (minimum values)

Comparative Tracking Index : CTI ? 400 V

Pole Version : PA

Molding : Polyamide,

Color : Off-white

Temperature limits :

Short Time : 140°C (284°F)

Continuous : 105°C (221°F)

Low Limit : -40°C (-40°F)



Temperature Limits : PA version

Oxygen Index Rating : 25 %

Tabs: Nickel plated copper alloy 2.8 mm (0.110 in.), 4.8 mm (0.187 in.) or 6.3 mm (0.250 in.)

APPROVAL INFORMATION

UL File No. E69841 | CSA File No. LR24322

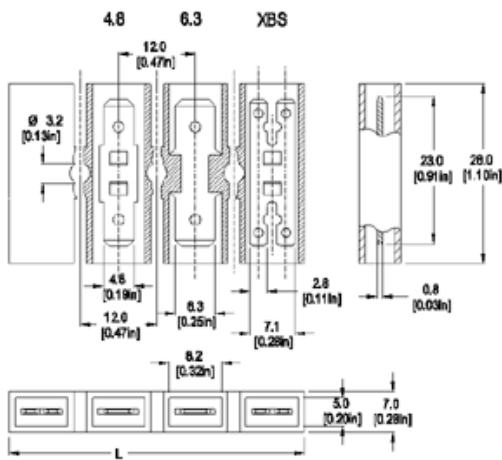
Type	Current (A)	Voltage (V)	Application Group	AWG	Screw Tightening Torque
 401 12.0 mm	25	300	B, C	10 max.	
 401 12.0 mm	25	300	B, D, E	10 max.	

25A is related to 6.3 mm tab and XBS. 4.8 mm tab current rating is 15A 2.8 mm tab current rating is 7A

International Approval Information

Rated Impulse Withstand Voltage : 4000 V

TECHNICAL DRAWING



Description :

Length of Connector (L)

$L = \text{No. of Poles} \times \text{Center to Center Spacing} - 2 \text{ mm}$

SECTION D - SERIES 400**Tab and Solder Connectors for Panel / Chassis Mounting**

The 400 Series provides quick-connect male tabs on each side of the terminal strip. Tabs are available in the following standard sizes: 2.8 mm (0.110 in.), 4.8 mm (0.187 in.) and 6.3 mm (0.250 in.). Uninsulated female quick-ons (not supplied) are used to connect wires to these blocks.

The moldings are made of either polyvinyl chloride or polyamide both materials meet UL 94 V-0 standard for self-extinguishing qualities.

Each product has a "How To Order" area as well as a complete listing of UL and CSA approval specifications, available options and accessories.