



AS-INTERFACE SLIMLINE MOD. S45,  
DIGITAL, 4I/3O, 2/3-WIRE,  
IP20 4 X 1 INPUT, 200MA,  
PNP 3 X 1 OUTPUT, 1A,  
DC 24V SCREW-TYPE TERMINAL CONNECT. MODULE  
WIDTH 45 MM

**General technical data:**

<b>Design of the product</b>		SlimLine S22.5 - I/O modules for operation in the control cabinet
<b>Design of the slave type</b>		A/B slave
<b>Type</b>		4 inputs / 3 outputs
<b>I/O configuration</b>		7
<b>ID/ID2 code</b>		A/0
<b>Protocol / will be supported / AS interface protocol</b>		Yes
<b>AS interface / total current input / max</b>	mA	270
<b>operating voltage</b>		
<ul style="list-style-type: none"> <li>• according to AS-Interface spezifikation</li> </ul>	V	26.5 ... 31.6
<b>Addressing</b>		front addressing socket
<b>Design of the electrical connection / of the inputs and outputs</b>		screw-type terminals
<b>Item designation</b>		
<ul style="list-style-type: none"> <li>• according to DIN 40719 extendable after IEC 204-2 / according to IEC 750</li> <li>• according to DIN EN 61346-2</li> </ul>		A  K
<b>note</b>		An external additional supply (AUX POWER) of 20 to 30 V DC is required for the supply of the output circuits. The additional supply must comply with VDE 0106 (PELV), protection class III.

**Sensor supply:**

<b>Type of voltage supply / for the sensor supply</b>		using AS-Interface
<b>Input voltage</b>	V	20 ... 30
<b>Characteristic feature of the sensor supply / short-circuit and overload resistant</b>		Yes
<b>Current carrying capacity / of the sensor supply / for all inputs</b> • at ambient temperature 40 °C	mA	200

**Inputs:**

<b>Number of digital inputs</b>		4
<b>type of the connection technology</b>		2- and 3-wire technology
<b>Input circuit</b>		PNP transistor
<b>Type of voltage / of the input voltage</b>		DC
<b>Inputs / switching level High / min</b>	V	10
<b>Input current / at the digital input</b> • for signal <1> / minimum • at signal <0> / maximum	mA mA	5 1.5
<b>Inputs / sensor supply using AS-Interface</b>		short-circuit and overload resistant

**Outputs:**

<b>Number of digital outputs</b>		3
<b>Type of voltage / of the outputs</b>		DC
<b>Output voltage / at 24 V</b> • for DC	V	22 ... 24
<b>Outputs / external power supply 24 V DC</b>		using terminals: Terminal 13 = L+, Terminal 19 = M
<b>Outputs</b> • aggregate current / max	A	4
<b>Current-carrying capacity</b> • of the semiconductor output / at DC-13 / at 24 V	A	2
<b>Design of the switching output</b>		solid state
<b>Characteristic feature of the output / short-circuit protected</b>		Yes
<b>output / Polarity reversal protection</b>		built-in
<b>Outputs</b> • short-circuit protection • induction protection • watchdog		built-in built-in built-in

**Status display**

• display of I/Os		yellow LED
• AS-Interface		green LED
• FAULT		red LED

## Assignment of data bits

• D0	IN1/OUT1
• D1	IN2 /OUT2
• D2	IN3/OUT3
• D3	IN4

## Ambient conditions:

### Ambient temperature

• during operating	°C	-25 ... +70
• during storage	°C	-40 ... +85

### Protection class IP

IP20

## Mechanical design:

<b>Width</b>	mm	45
<b>Height</b>	mm	106
<b>Depth</b>	mm	86
<b>Type of mounting</b>	35 mm standard rail mounting or wall mounting using push-in lugs	
<b>Conductor cross-section</b>	<ul style="list-style-type: none"> <li>• solid</li> <li>• finely stranded                             <ul style="list-style-type: none"> <li>• with end sleeve</li> </ul> </li> <li>• AWG / solid or stranded</li> </ul>	

1 x (0.5 - 4) mm<sup>2</sup> or 2 x (0.5 - 2.5) mm<sup>2</sup>

1 x (0.5 - 2.5) mm<sup>2</sup> or 2 x (0.5 - 1.5) mm<sup>2</sup>

AWG 2 x (20 - 14) mm<sup>2</sup>

## Certificates/approvals:

### AS-Interface certificate

yes (or requested for in case of new units)

### Approvals

UL, CSA, shipbuilding (or requested for in case of new units)

### General Product Approval



CSA



GOST



UL

### Shipping Approval



ABS



BUREAU  
VERITAS



DNV



LRS



PRS



RMRS

### other

[Confirmation](#)

[Declaration of  
Conformity](#)

[other](#)

[Environmental  
Confirmations](#)

## Further information:

**Information- and Downloadcenter (Catalogs, Brochures,...)**

<http://www.siemens.com/industrial-controls/catalogs>

**Industry Mall (Online ordering system)**

<http://www.siemens.com/industrial-controls/mall>

**CAX-Online-Generator**

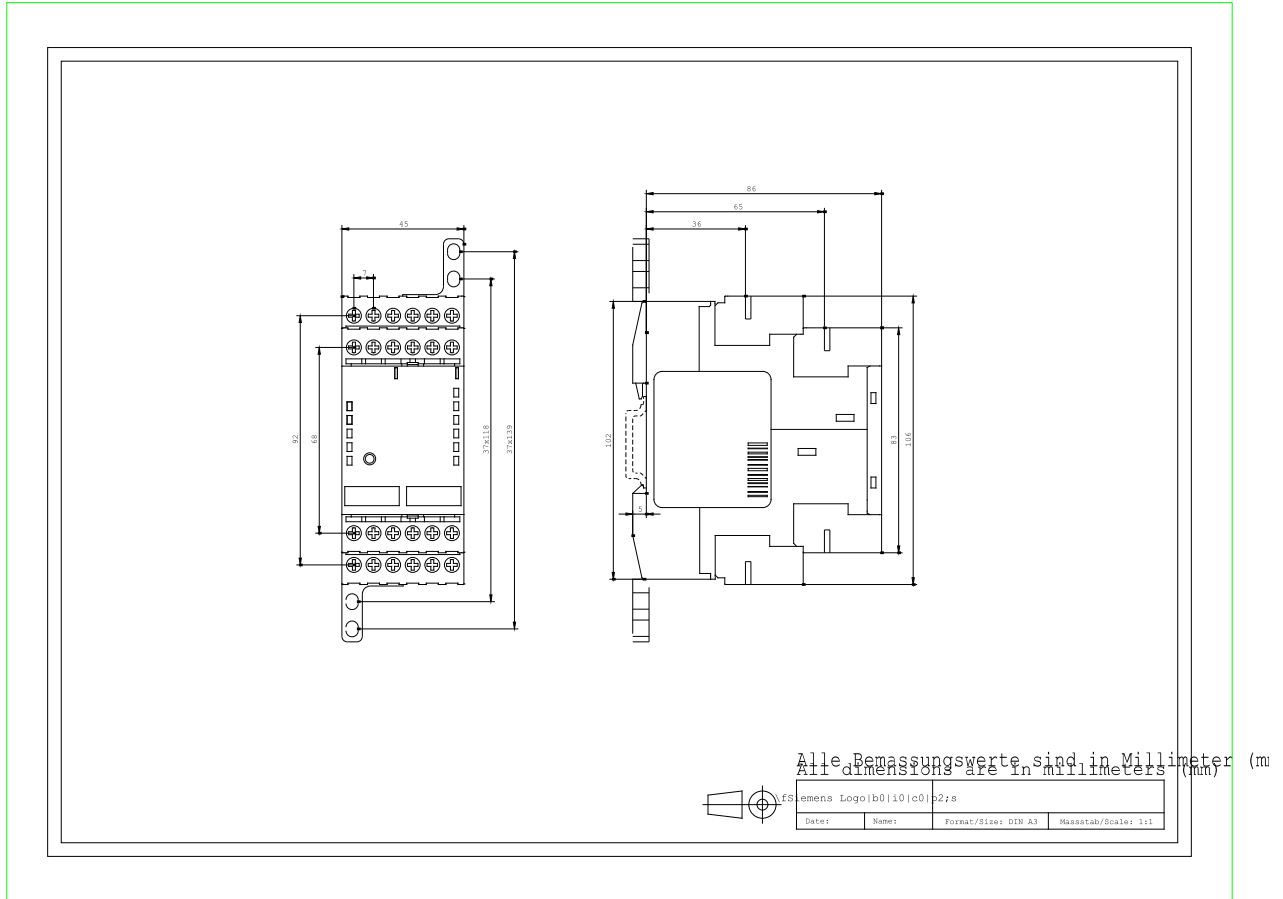
<http://www.siemens.com/cax>

**Service&Support (Manuals, Certificates, Characteristics, FAQs,...)**

<http://support.automation.siemens.com/WW/view/en/3RK2400-1FE00-0AA2/all>

**Image database (product images, 2D dimension drawings, 3D models, device circuit diagrams, ...)**

[http://www.automation.siemens.com/bilddb/cax\\_en.aspx?mlfb=3RK2400-1FE00-0AA2](http://www.automation.siemens.com/bilddb/cax_en.aspx?mlfb=3RK2400-1FE00-0AA2)



last change:

Jan 23, 2013