

stand-alone assembly support for 3RU21/3RB30/3RB31
Size S3 Main circuit: screw terminal



Figure similar

General technical data:		
Product brand name		SIRIUS
Product designation		individual mount
Size of overload relay		S3
Ambient temperature		
• during storage	°C	-50 ... +80
• during operation	°C	-20 ... +70
Installation/ mounting/ dimensions:		
Mounting type		screw and snap-on mounting onto 35 mm standard mounting rail
Width	mm	70
Height	mm	120
Depth	mm	136
Connections/ Terminals:		
•		
— Type of connectable conductor cross-sections for main contacts finely stranded		

— with core end processing

- Type of connectable conductor cross-sections at AWG conductors

— for main contacts

1x (2.5 ... 50 mm²)

1x (10 ... 2/0)

Certificates/ approvals:

General Product Approval

Declaration of Conformity

Test Certificates



CCC



CSA



UL



EG-Konf.

[Type Test Certificates/Test Report](#)

Shipping Approval

other



ABS



LRS



PRS



RINA



RMRS

[Confirmation](#)

Further information

Information- and Downloadcenter (Catalogs, Brochures,...)

<http://www.siemens.com/industrial-controls/catalogs>

Industry Mall (Online ordering system)

<http://www.siemens.com/industrymall>

Cax online generator

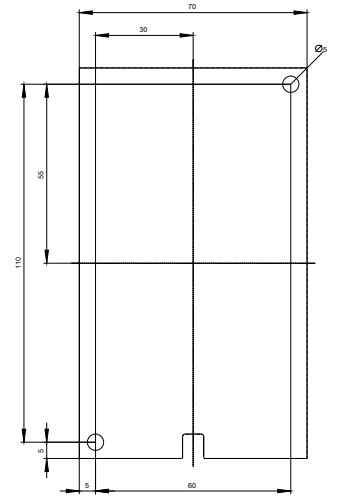
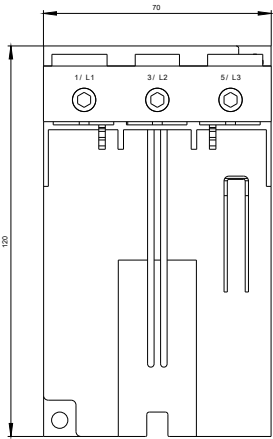
<http://support.automation.siemens.com/WW/CAXorder/default.aspx?lang=en&mlfb=3RU2946-3AA01>

Service&Support (Manuals, Certificates, Characteristics, FAQs,...)

<https://support.industry.siemens.com/cs/ww/en/ps/3RU2946-3AA01>

Image database (product images, 2D dimension drawings, 3D models, device circuit diagrams, EPLAN macros, ...)

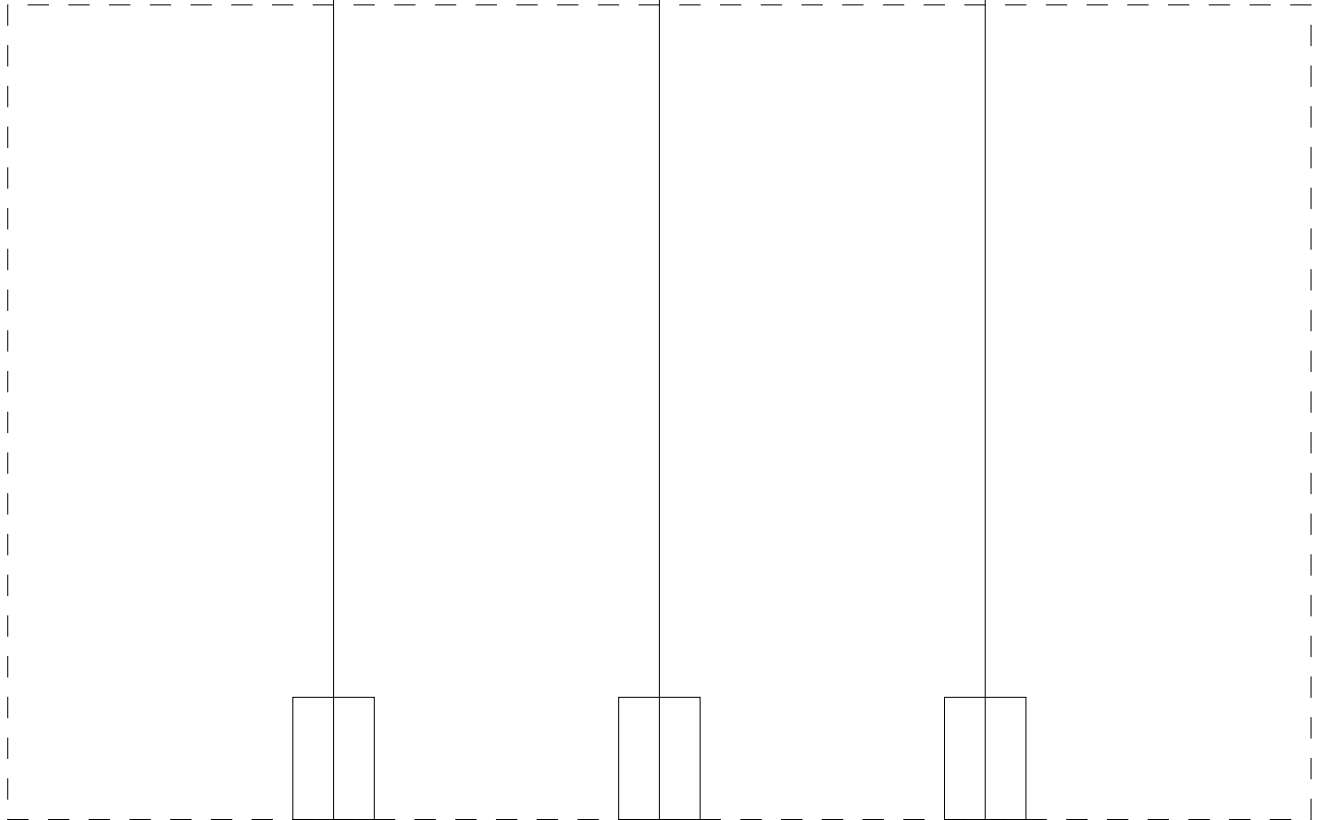
http://www.automation.siemens.com/bilddb/cax_de.aspx?mlfb=3RU2946-3AA01&lang=en



1/L1

3/L2

5/L3



last modified:

10/24/2018