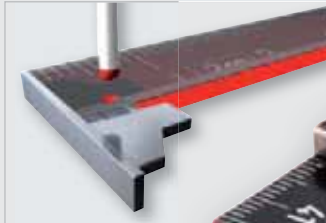


Wiha Longlife® Plus Composite.

Maximum flexural strength.



Wiha Longlife® Plus Composite.

- **Extremely rigid!**
 - Absorbs bending forces
 - Minimises risk of breakage
- **Extremely durable!**
 - No swelling with water contact
 - Resistant against many chemicals
- **Lasts up to 10 times longer!**
 - Rigidity ensured by longitudinal glass fibres
 - Weatherproof and temperature-resistant plastic
 - Wear-resistant joints
 - Metal ends cannot be lost (protective function)

Longlife® Plus Composite redefines measuring with folding rulers. With a very high level of rigidity as known from high-grade beech wood rulers, this folding ruler

features increased measuring precision: precision class II has only been achieved until now by metal rulers and measuring tapes.

LongLife Plus Composite



NEW

410 2005 Longlife® Plus Composite, folding ruler, 2 m, 10 segments. With metal ends.

Material: Composite design: two top layers made of longitudinal glass fibres absorb bending forces and ensure more rigidity than wooden rules. No swelling with water contact, resistant to chemicals.

Joints: Play-free, wear-free and dirt-resistant joint with spring pin for constant tension. Tight 90° and 180° latching of all joints.

Scale: Red/black version: Deep-embossed white scale in 1 mm increments
Grey/white version: Deep-embossed black scale in 1 mm increments, every 10 cm is marked in red

Accuracy: CE conformity, EU standard accuracy class II.

Extra: Metal ends which cannot be lost on the first and last segment. Readable from both sides through a second, backwards running scale (Recto Verso).



NEW

410 ... VH Sales counter display LongLife® Plus Composite folding rulers. Acrylglas displays with 20 pieces (2 m).

Order-No.				
37067	15	red/black	128	10
37309	15	grey/white	128	10

Order-No.	Content	Quantity
37145	410 2005 4	20 Longlife® Plus Composite, 2 m, red/black
37309	410 2005 5	20 Longlife® Plus Composite, 2 m, grey/white