

Industrial Light Intensity Sensor, MODBUS-RTU RS485, with Proof Aviation Connector- Seed Studio



Industrial Light Intensity Sensor, MODBUS-RTU RS485 & 0-2V (S-Light-02), with Waterproof Aviation Connector

SKU

314990740

S-Light-02 ambient light sensor, or illuminance sensor, measures the ambient illuminance. Each sensor is calibrated and offers excellent accuracy and consistency. Applications are: scientific research, solar farms, greenhouse, weather station etc.

PRODUCT DETAILS

This Industrial Light Intensity Sensor comes in two versions. The main difference is in the cable connector. Please choose the version that best suits your needs:

- (1) S-Light-02: with a waterproof aviation connector. This version saves you time in deployment as you won't have to use screws to connect the cable to the data logger. And it can be used with SenseCAP Sensor Hub 4G Data Logger instantly with ease.
- (2) S-Light-01: with hook-up wires.

Features:

Wide-range measurement: up to 200000lux

Output interface with RS485, Voltage

Level indicator and spring-loaded for installation

IP66 rated: waterproof & dustproof, suitable for outdoor applications

High accuracy and consistency with excellent stability

Reverse power protection and built-in TVS/ESD protection

Light intensity sensors are used to measure ambient illuminance in a given environment. This can have many important applications. Light directly impacts the growth of plants, so in agriculture, it can run manage farms and greenhouses more efficiently with real-time light data and analysis. Operators of electric grids and solar farms can use the data to predict the available electricity and run their operations more efficiently.

This Light Intensity Sensor (S-Light-01) is ideal for this kind of environment. It is IP66 rated, waterproof, and dustproof, and has no problem working under harsh conditions like solar farms, outdoor agricultural farms, as well as greenhouses. Each sensor is calibrated and offers high accuracy and consistency.

This sensor support two output options MODBUS-RTU RS485 protocol or analog voltage (0-2v) and can be used with a data logger conveniently.

Applications:

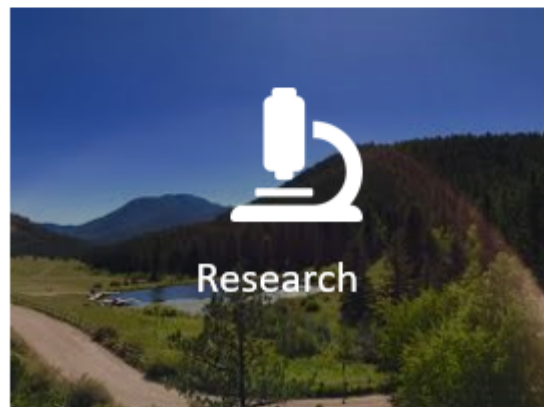
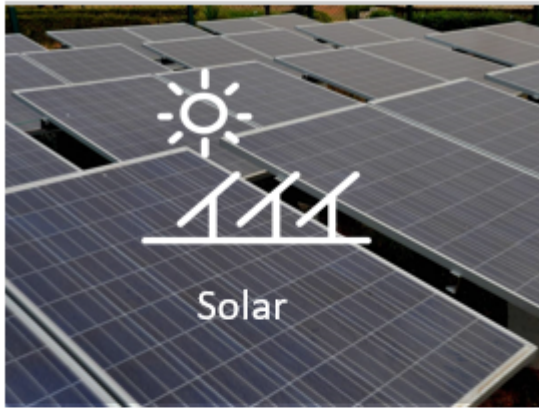
Weather stations

Solar farms

Outdoor Farming

Greenhouse

Research

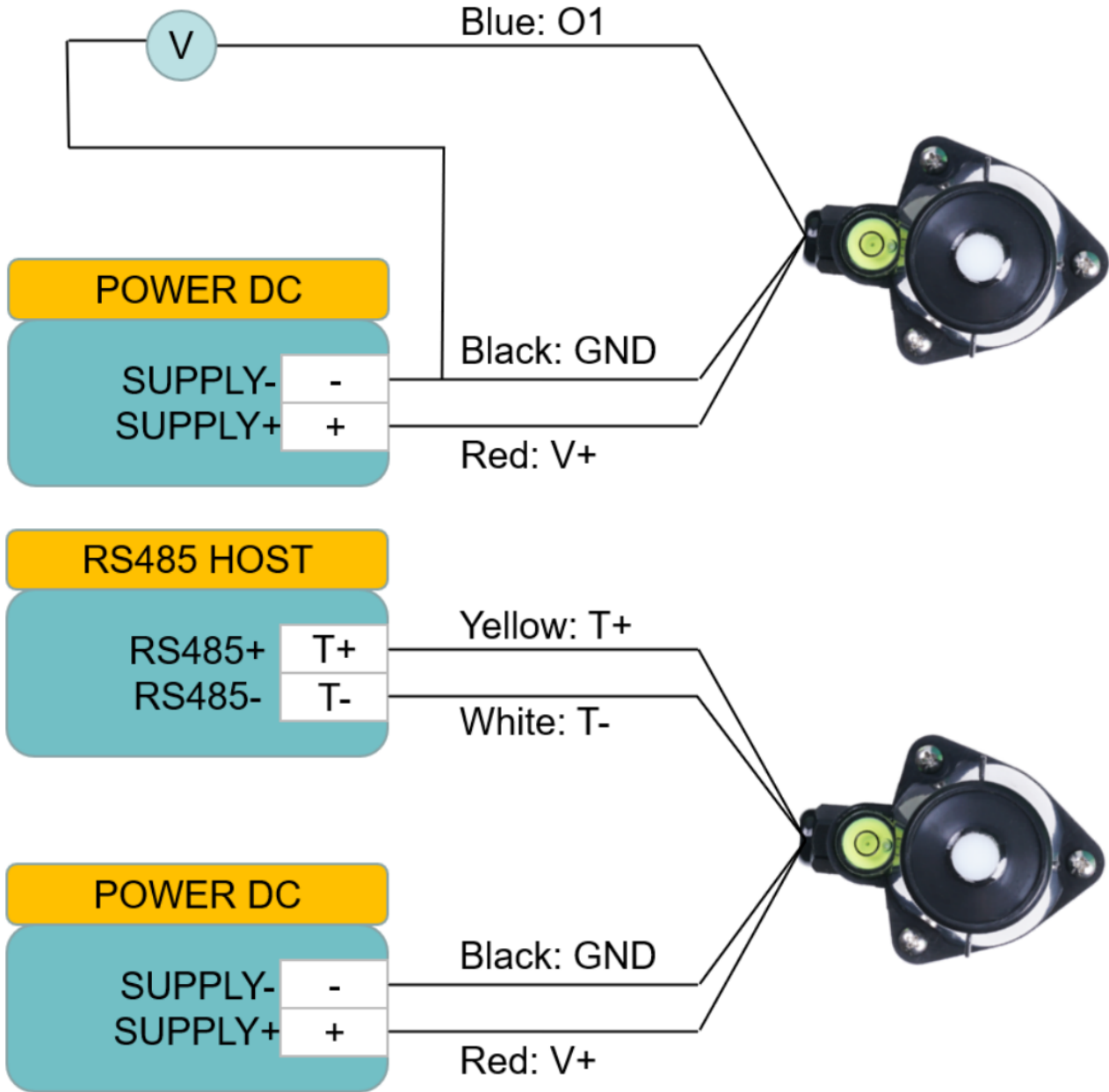


Specifications

Output Interface	RS485 Modbus-RTU, Analog Voltage 0-2V (Output resistance ~0ohm)
Power Supply	3.9-30V/DC
Power Consumption	7mA@24V DC
Illuminance Range	Range:0 ~ 200000 Lux, Accuracy:±6% , Resolution:1lux
Direction Error	30°±3%,60°±6%,80°±24% (Cosine Characteristics)
IP Ratings	IP66
Operating Temperature	-40~85°C
Installation	Screw hole * 3

Cable Length	2 meters
Dimension	75*55*58mm

Wiring



Dimensions



ECCN/HTS

HSCODE 9031499090

UPC