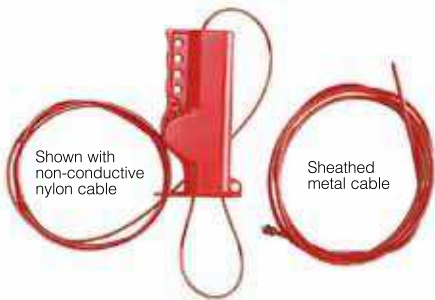
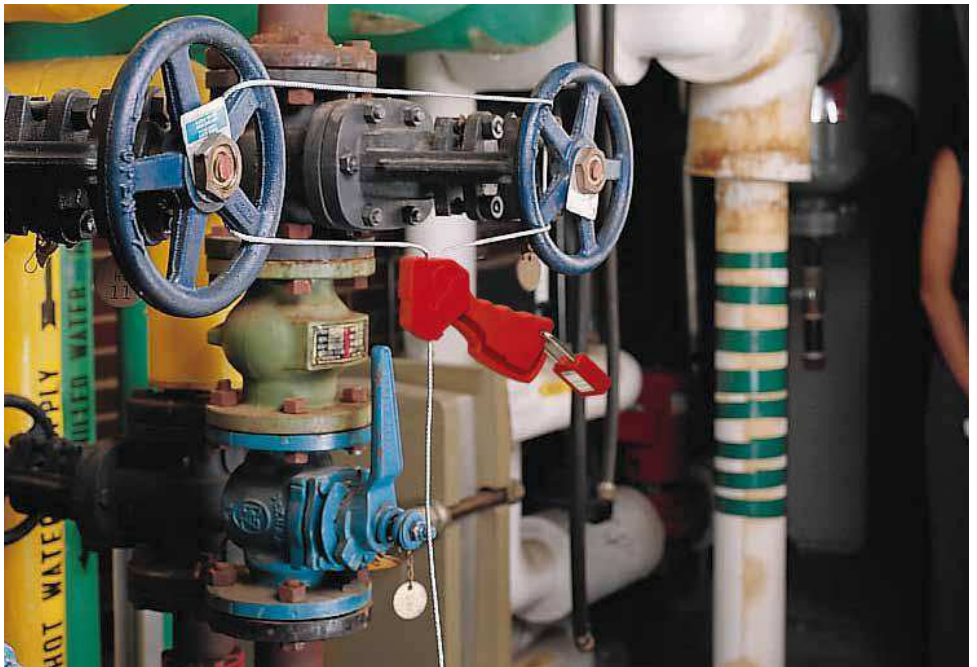


## CABLE AND CHAIN LOCKOUT

# CABLE & CHAIN LOCKOUT

- Greater versatility - used in variety of applications
- Able to lockout multiple items with one device
- Great for isolating unconventional devices
- Portable and ease of usage compared to Chain lockout



## All Purpose Cable Lockout

- Compact, lightweight body made of rugged Isoplast Polymer
- Ergonomic design makes it a "cinch" to tighten cable – hold device in one hand and cinch tight with the other
- Superior chemical, corrosion and temperature resistance properties
- Two types of interchangeable cables:
  - Nonconductive nylon cable ( $\frac{1}{8}$ " diameter)
  - Sheathed metal cable ( $\frac{3}{16}$ " diameter, vinyl coating)
- Built-in cable loop keeps cable neatly coiled when stored, also keeps extra cable from dangling loose and posing a hazard when in use
- 4 lock holes in handle accommodate most lock shackles and hasps
- Max. Service temperature of cables:
  - Sheathed Metal: -30°F to 180°F
  - Non-Conductive Nylon: -40°F to 200°F

Catalog #	Dimensions	Description
50943	8'	APCLO with sheathed metal cable
50941	8'	APCLO with non-conductive nylon cable
50944		APCLO without cable

## Sheathed Metal Cables (Sold Separately)

Catalog #	Dimensions	Description
50947	8'	Sheathed metal cable
50950	12'	Sheathed metal cable
50953	16'	Sheathed metal cable
50956	20'	Sheathed metal cable

## Non-conductive Nylon Cables (Sold Separately)

Catalog #	Dimensions	Description
50945	8'	Non-conductive Nylon cable
50948	12'	Non-conductive Nylon cable
50951	16'	Non-conductive Nylon cable
50954	20'	Non-conductive Nylon cable

## Mini Cable Lockout

- Perfect for use on disconnect switches, small gate valves, etc
- Extremely compact and portable. Cable stored internally
- Push-button self-winding mechanism automatically cinches cable tight
- Body made of impact modified nylon
- Superior chemical, corrosion and temperature resistant properties.
- Comes with vinyl-coated steel cable or nonconductive nylon cable
- 6 lock holes accommodate most padlock shackles and hasps
- Cable dimensions:  $\frac{1}{16}$ " outside diameter x 8' length



Catalog #	Dimensions	Description
50940	4" diameter x 1 $\frac{3}{4}$ " deep	Mini Cable Lockout w/ Steel Cable
51442	4" diameter x 1 $\frac{3}{4}$ " deep	Mini Cable Lockout w/ Nylon Cable