

DIN 15 710 C-3-1579007-1

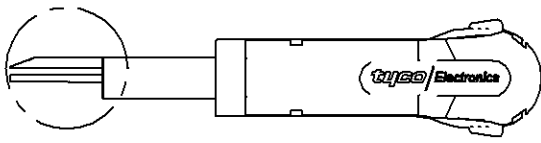
PASSNASS	ABMSS

PROJECT NO. _____ USED ON _____

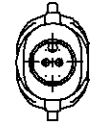
THIS DRAWING IS A CONTROLLED DOCUMENT FOR THE PURPOSES OF THE ISO 9001 CERTIFICATION AND THE CONTROLLED DOCUMENTATION SYSTEM. IT SHALL BE CONTROLLED FOR THE LATEST REVISION.

DIESES ZEICHNUNGSDOKUMENT FÜR DICHEN WPF. INCORPORATED KONTROLLIERT. ES WIRD FÜR DIE ISO 9001 ZERTIFIZIERUNG UND FÜR DAS KONTROLLIERTE DOKUMENTATIONSSYSTEM VERWENDET. ES WIRD FÜR DIE NEUESTE REVISION KONTROLLIERT.

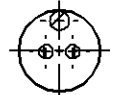
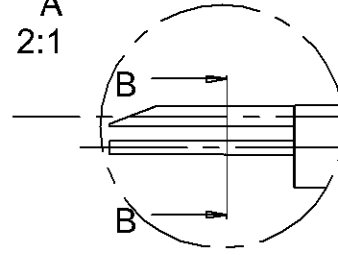
THIS DRAWING IS CONTROLLED AND IS SUBJECT TO THE ISO 9001 CERTIFICATION AND THE CONTROLLED DOCUMENTATION SYSTEM. IT SHALL BE CONTROLLED FOR THE LATEST REVISION.



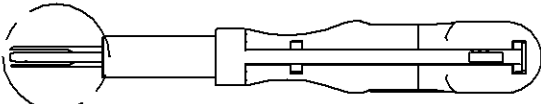
A



A
2:1

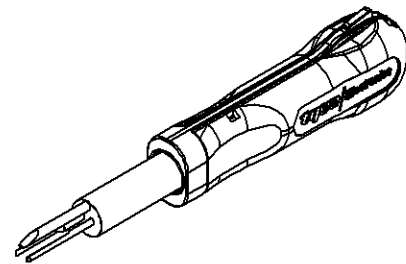
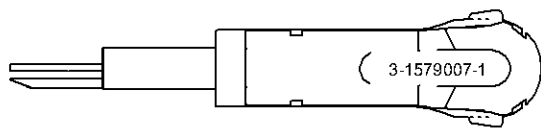
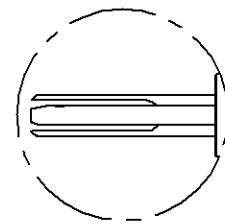


B-B
2:1



C

C
2:1



FOR CONTACTS / HOUSINGS:
SPT (in relay holder)

PREZISASTOLERANZEN NACH DIN 7168 (Werte in mm)

NENNMASS-REIBE	0,5	3	6	30	120	400
BEREICH (1)	B15	3	6	30	120	400

1) ABWEICHUNG VON DIN 7168 2) LÄNGE DES KONTAKTSCHWELLS

LÄNGEN-MASS	HITTEL	±0,1	±0,1	±0,2	±0,3	±0,3	±0,8
RADIEN U. FASEN	±0,2	±0,3	±1	±2	±4	±4	

WINKELABMASSE (1) 2) ±1° ±1° ±30° ±30° ±10° ±5°

GENERAL TOLERANCES ACC. TO DIN 7168 (VALUES IN mm)

1) DEVIATING FROM DIN 7168 2) LENGTH OF SHORT ANGLE SIZE

LOC	-	-	-
AI	-	-	-
DIST	-	-	-

TEIL (IN BEREICH X... MIT PRÜFSTRICH-NR. <-) NUR GEZ., REVISION-STATUS UND LÖSUNGSSYMBOLE ODERWECHSELN

PART TO BE MARKED WITH PRÜFSTRICH-NR. <-) AS SHOWN, REV. STATUS AND VENDOR'S MARK ON AREA X...

BEREICH	REVISION	DATE	DWN	APVD
A	ECN EGC0-0000-00	00.00.2000	-	-

ALLE UNKANTIGE KANTEN 0,2x45° ENTGRATEN
REMOVE BURRS, BREAK SHARP EDGES 0,2x45°

REVISION RECORD	DATE	DWN	APVD
A	00.00.2000	-	-

FINISH	DWN	06.11.2006	MATERIAL		HEAT TREAT	
DIMENSIONS	mm		m. pearson			
TOLERANCES UNLESS OTHERWISE SPECIFIED			CHK			
0 PLC			APVD			
1 PLC						
2 PLC						
3 PLC						
4 PLC						

SCALE	1:1	SIZE	A3	DRAWING NO.	C-3-1579007-1	SHEET	1 OF 1	REV	A
NAME		EXTRACTION TOOL		Entriegelungswerkzeug		Gewicht / Weight		0,000kg	
MATERIAL		tyco Electronics		tyco Electronics AMP GmbH		D - 64625 Bensheim			