

Hexagonal locknut

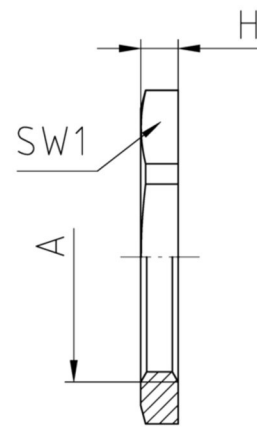
2xx M

Configuration

| | |
|-------------------|--------------------------------|
| Hexagonal locknut | Brass CuZn39Pb3, nickel-plated |
| Internal thread | Pg as per DIN 40430 |


Properties

| | | |
|-------------------|-----------------|---|
| Temperature range | -60°C +200°C | <ul style="list-style-type: none"> for secure tightening of cable glands and accessories |
|-------------------|-----------------|---|



Features

Standard

| A | SW1 | H |  | Part No. |
|---------|-----|-----|---|----------|
| | mm | mm | Piece | |
| Pg 7 | 15 | 2,8 | 100 | 207 M |
| Pg 9 | 18 | 2,8 | 100 | 209 M |
| Pg 11 | 21 | 3 | 100 | 211 M |
| Pg 13,5 | 23 | 3 | 100 | 213 M |
| Pg 16 | 26 | 3 | 100 | 216 M |
| Pg 21 | 32 | 3,5 | 100 | 221 M |
| Pg 29 | 41 | 4 | 100 | 229 M |
| Pg 36 | 51 | 5 | 50 | 236 M |
| Pg 42 | 60 | 5 | 50 | 242 M |
| Pg 48 | 64 | 5,5 | 50 | 248 M |