

Electronic housing - ME 22,5 UTG RD - 2706438

Please be informed that the data shown in this PDF Document is generated from our Online Catalog. Please find the complete data in the user's documentation. Our General Terms of Use for Downloads are valid (<http://phoenixcontact.com/download>)




Component housing, length: 99 mm, without vents, Lower part, Cross connection: without bus connector, color: red, width: 22.5 mm, number of positions cross connector: not relevant

Why buy this product

- Item is from the ME product range
- Tool-free mounting
- Available in overall widths from 12.5 mm to 90 mm, modular extension is possible
- Inflammability class V0 according to UL 94
- Variety of connection technologies
- Can be mounted on the DIN rail
- Optional bus connector that is either integrated or mounted on the DIN rail

Key Commercial Data

Packing unit	10 STK
Minimum order quantity	10 STK
GTIN	 4 017918 729974
GTIN	4017918729974
Weight per Piece (excluding packing)	38.000 g
Custom tariff number	85472000
Country of origin	Germany

Technical data

General

Housing type	Component housing
Housing material	Polyamide
Color (RAL)	red (3001)

Ambient conditions

Ambient temperature (storage/transport)	-40 °C ... 70 °C
---	------------------

Electronic housing - ME 22,5 UTG RD - 2706438

Technical data

Ambient conditions

Ambient temperature (assembly)	-5 °C ... 100 °C
Ambient temperature (operation)	-40 °C (depending on power dissipation)

Dimensions

Length	99 mm
Width	22.5 mm
Depth	99 mm

Technical data

Number of positions	16
	24
	4

Standards and Regulations

Flammability rating according to UL 94	V0
--	----

Environmental Product Compliance

China RoHS	Environmentally friendly use period: unlimited = EFUP-e
	No hazardous substances above threshold values

Classifications

eCl@ss

eCl@ss 4.0	27180401
eCl@ss 4.1	27180401
eCl@ss 5.0	27180506
eCl@ss 6.0	27180800
eCl@ss 7.0	27182702
eCl@ss 8.0	27182702
eCl@ss 9.0	27182702

ETIM

ETIM 2.0	EC001031
ETIM 3.0	EC001031
ETIM 4.0	EC001031
ETIM 5.0	EC001031
ETIM 6.0	EC001031

UNSPSC

UNSPSC 6.01	31261501
UNSPSC 7.0901	31261501
UNSPSC 11	31261501
UNSPSC 12.01	31261501

Electronic housing - ME 22,5 UTG RD - 2706438

Classifications

UNSPSC

UNSPSC 13.2	31261501
-------------	----------

Approvals


Approvals

Approvals

UL Recognized

Ex Approvals

Approval details

UL Recognized		http://database.ul.com/cgi-bin/XYV/template/LISEXT/1FRAME/index.htm	FILE E 240868
---------------	---	---	---------------

Accessories

Accessories

Coding element

Coding star - CR-MSTB - 1734401

Coding section, inserted into the recess in the header or the inverted plug, red insulating material



Coding profile - CP-MSTB - 1734634

Coding profile, is inserted into the slot on the plug or inverted header, red insulating material



Component housing center part

Electronic housing - ME 22,5 UTG RD - 2706438

Accessories

Electronic housing - ME 45 UTM GN - 2853404



Component housing, with vents, Lower part, color: green, width: 22.5 mm

Electronic housing - ME 45 UTM G GN - 2853417



Component housing, with vents, Lower part, color: green, width: 22.5 mm

Electronic housing - ME 45 UTM G GN - 2853417



Component housing, with vents, Lower part, color: green, width: 22.5 mm

Filler plug

Electronic housing - ME B-22,5 MKDSO GN - 2907143



Filler plugs, for unoccupied terminal points

Ground contact

Electronic housing - ME FE-CONTACT - 2908294



Functional earth ground contact, for intermediate elements.

Electronic housing - ME 22,5 UTG RD - 2706438

Accessories

Electronic housing - ME FE-CONTACT - 2908294



Functional earth ground contact, for intermediate elements.

Mounting material

Components of electronic housing - ME-SAS - 2853899



Shield connection clip for printed circuit terminal block

Electronic housing - ME LPZS - 2906911



Component housing

Electronic housing - ME MF 17,5 - 2908281



Metal foot catch, for intermediate elements.

Components of electronic housing - ME-SAS - 2853899



Shield connection clip for printed circuit terminal block

Electronic housing - ME 22,5 UTG RD - 2706438

Accessories

Electronic housing - ME LPZS - 2906911



Component housing

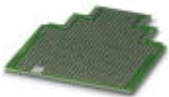
Electronic housing - ME MF 17,5 - 2908281



Metal foot catch, for intermediate elements.

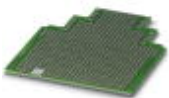
PCB

Electronic housing - ME LP - 2906908



PCB, for custom fitting, with contact to DIN rail (EN 60715)

Electronic housing - ME LP - 2906908



PCB, for custom fitting, with contact to DIN rail (EN 60715)

Printed circuit board terminal

PCB terminal block - MKDSO 2,5/ 4-R - 1707247



PCB terminal block, nominal current: 24 A, nom. voltage: 400 V, pitch: 5 mm, number of positions: 4, connection method: Screw connection with tension sleeve, mounting: Wave soldering, conductor/PCB connection direction: 0 °, color: green. Article with lateral pin exit

Electronic housing - ME 22,5 UTG RD - 2706438

Accessories

PCB terminal block - MKDSO 2,5/ 4-L RD - 2909400



PCB terminal block, nominal current: 24 A, nom. voltage: 400 V, number of positions: 4, connection method: Screw connection with tension sleeve, mounting: Wave soldering, conductor/PCB connection direction: 0 °

PCB terminal block - MKDSO 2,5/ 4-R RD - 2909413



PCB terminal block, nominal current: 24 A, nom. voltage: 400 V, connection method: Screw connection with tension sleeve, mounting: Wave soldering, conductor/PCB connection direction: 0 °

Electronic housing - ME B-22,5 MSTBO RD - 2854542

Filler plugs, for unoccupied terminal points

Electronic housing - ME B-22,5 MKDSO RD - 2909332

Filler plugs, for unoccupied terminal points

Electronic housing - ME B-22,5 MKDSO RD - 2909332

Filler plugs, for unoccupied terminal points

Necessary add-on products

Electronic housing - ME 22,5 OT-MSTBO SET - 2907444

Component housing, length: 99 mm, Upper part, color: green, width: 22.5 mm, height: 38.5 mm



Electronic housing - ME 22,5 UTG RD - 2706438

Accessories

Electronic housing - ME 22,5 OT-MSTBO GN - 2907169



Component housing, length: 99 mm, Upper part, color: green, width: 22.5 mm, height: 38.5 mm

Electronic housing - ME 22,5 OT-1MSTBO GN - 2709558



Component housing, length: 99 mm, Upper part, color: green, width: 22.5 mm, height: 38.5 mm

Electronic housing - ME 22,5 OT-MKDSO SET - 2907473



Component housing, length: 99 mm, Upper part, color: green, width: 22.5 mm, height: 38.5 mm

Electronic housing - ME 22,5 OT-MKDSO GN - 2907172



Component housing, length: 99 mm, Upper part, color: green, width: 22.5 mm, height: 38.5 mm
