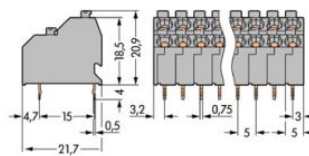
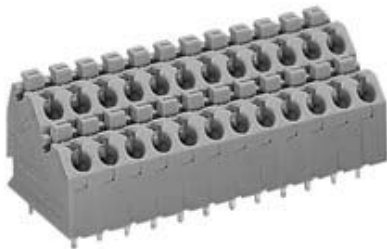


Item no.: 250-710
 Product description: Double-deck PCB terminal strip 2 solder pins/pole, in line 10x2-pole Pin spacing 5 mm / 0.197 in with push-button with test port for 2.3 mm Ø test pin



Produkt kann von Bild abweichen / product may differ

Packing unit 48 4*12 pieces

RoHS compliant

Weight	19.156 g
Color	grey
No. of connection Points	20
No. of potentials	20
pole count	10
Height	20.9 mm
Height	0.823 in
Width	51.2 mm
Width	2.016 in
Depth	21.7 mm
Depth	0.854 in
Pin spacing from	5 mm
Pin spacing from	0.197 in
Rating based on	IEC/EN 60664-1
Overvoltage category EN I	III
Pollution degree	2
Measured voltage EN	320 V
Measured shock voltage	4 kV

Current intensity EN	10 A
Overvoltage category EN II	II
Pollution degree	2
Measured voltage EN	630 V



Measured shock voltage	4 kV
Current intensity EN	10 A
Overvoltage category EN III	III
Degree of pollution	3
Rated voltage EN	320 V
Rated surge voltage	4 kV
Nominal current	10 A
Cross section [mm ²]	0.5 - 1.5 mm ²
Wiring method	solid
Cross section [mm ²]	0.75 - 1.5 mm ²
Wiring method	fine-stranded
Cross section [mm ²]	0.5 - 1 mm ²
Wiring method	fine-stranded (with ferrule and plastic collar)
Cross section [mm ²]	0.5 - 1 mm ²
Wiring method	fine-stranded (with ferrule, without plastic collar)
Cross section [AWG]	20 - 14 AWG
Strip length from	9 mm
Strip length to	10 mm
Strip length from [inch]	0.35 in
Strip length up to [inch]	0.39 in
Conductor entry angle to the PCB (degrees)	45 °
Solder pin length [mm]	4 mm



Solder pin width A [mm]	0.5 mm
Solder pin width B [mm]	0.75 mm
Diameter of drilled hole [mm]	1.2 mm
Tolerance of drilled hole diameter [mm]	0.1 mm
Material group	I
Insulating material	PA 6.6
Temperature stability	-60 °C to +105 °C
Flammability category, based on UL 94	V0
Clamping spring material	Nickel-chromium spring steel (CrNi)
Contact material	Electrolytic copper (Ecu)
Contact plating	tin-plated
xxx-xxx/000-006	blue
xxx-xxx/000-012	orange



Item number	Admission office	Approval no.	Voltage [V]	Current [A]	Cross section [mm ²]
250-710	ABS	04-HG469925/1-PDA	450	10	0,5-1,5
250-710	CCA	NL6336	400	10	0,2-1,5
250-710	CSA	154112-1132097	300	10	22-14
250-710	GL	17296-00HH	450	10	0,5-1,5
250-710	KEMA	2114919.01	400	17,5	0,2-1,5
250-710	RMR	11130002	450	10	0,5-1,5
250-710	UR	E45172	300	10	22-14

Sorting criteria: admission office - approval number

© WAGO Kontakttechnik GmbH & Co. KG

Specifications are subject to changes and errors may be expected